

4668C2

4668C5

# Harris Central Appraisal District



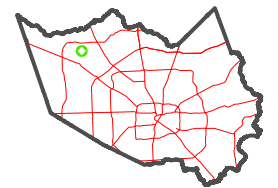
0 45 90 180  
Feet

PUBLICATION DATE:  
1/23/2024

Geospatial or map data maintained by the Harris Central Appraisal District is for informational purposes and may not have been prepared for or be suitable for legal, engineering, or surveying purposes. It does not represent an on-the-ground survey and only represents the approximate location of property boundaries.

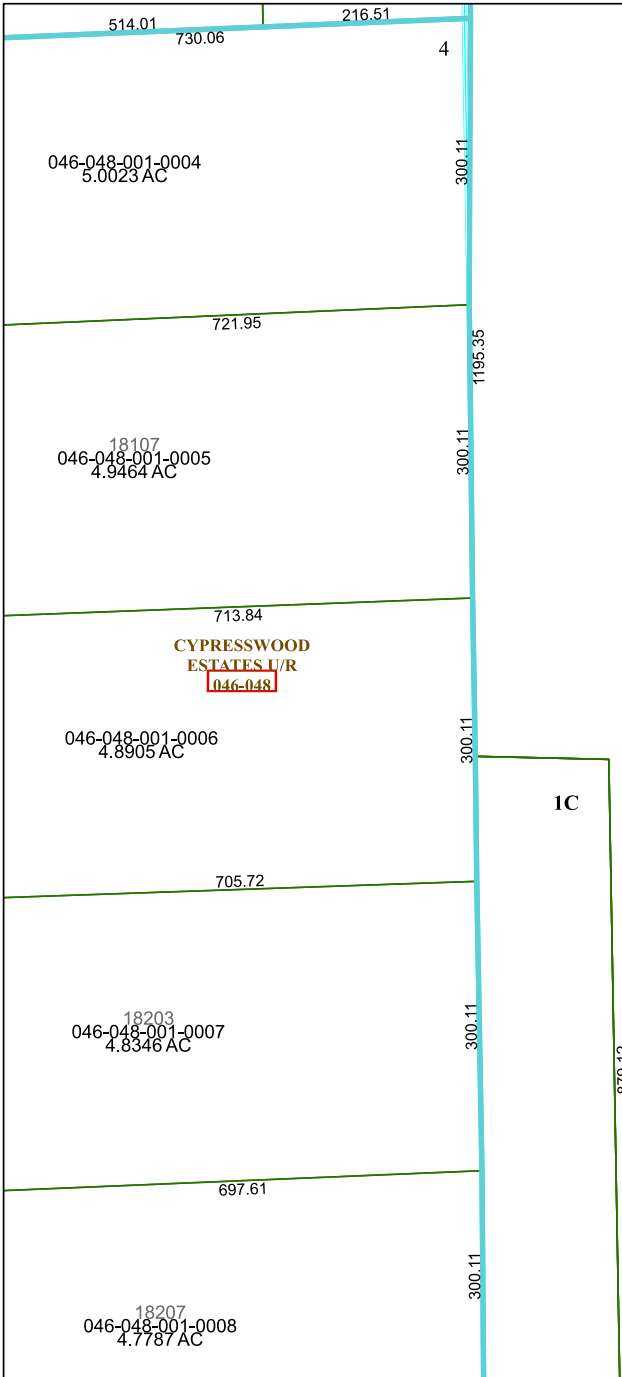


MAP LOCATION



## FACET 4668C6

4	1	2	3	4
8	5	6	7	8
12	9	10	11	12



1C

17335  
116.6653 AC

4668C10