

4668C3

4668C11

4668C6

Harris Central Appraisal District



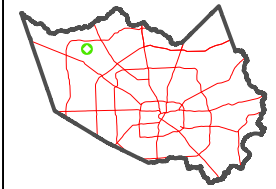
0 45 90 180 Feet

PUBLICATION DATE: 1/23/2024

Geospatial or map data maintained by the Harris Central Appraisal District is for informational purposes and may not have been prepared for or be suitable for legal, engineering, or surveying purposes. It does not represent an on-the-ground survey and only represents the approximate location of property boundaries.

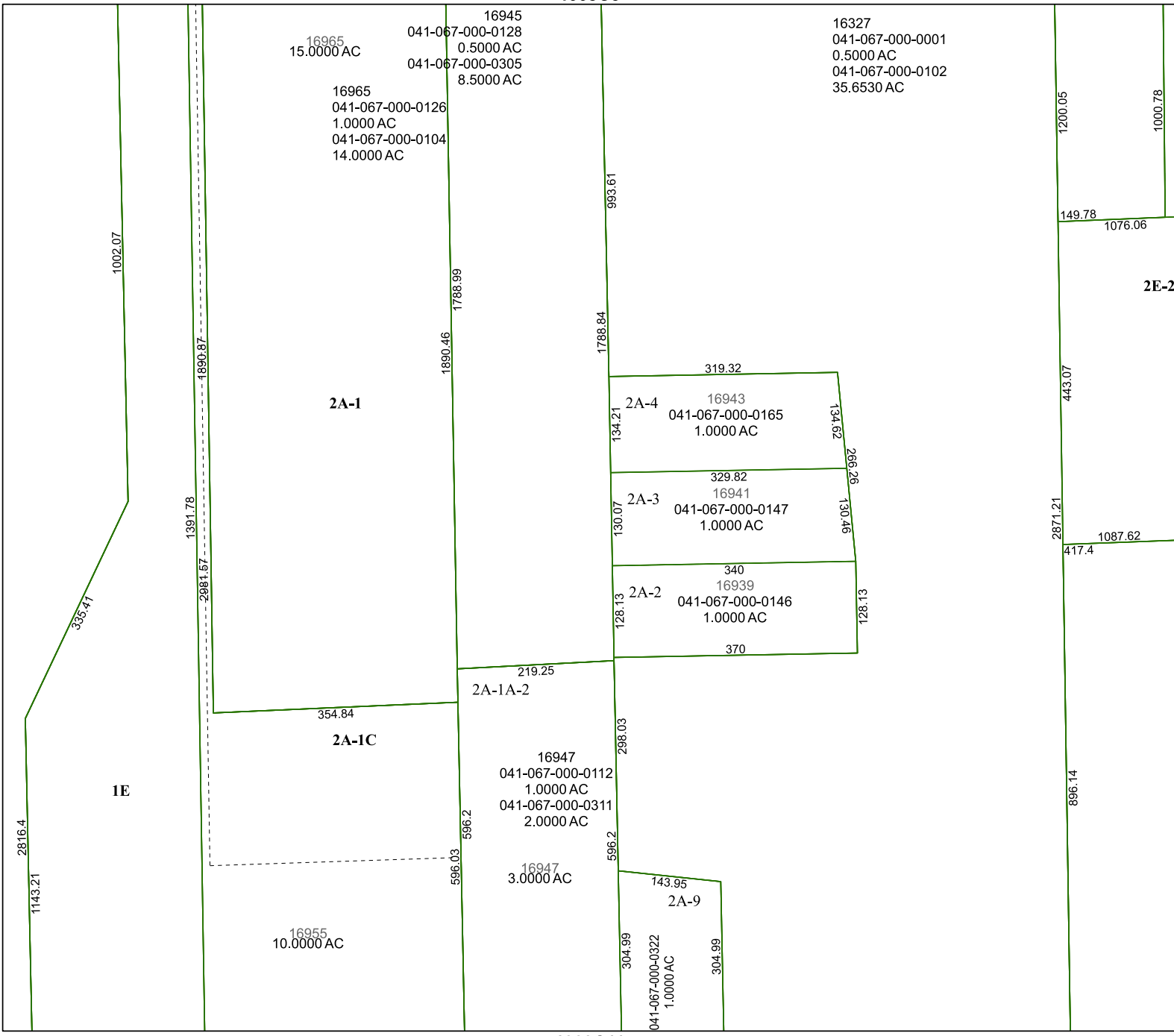


MAP LOCATION



FACET 4668C7

1	2	3	4	1
5	6	7	8	5
9	10	11	12	9



16965
15.0000 AC
041-067-000-0128
0.5000 AC
041-067-000-0305
8.5000 AC
16965
041-067-000-0126
1.0000 AC
041-067-000-0104
14.0000 AC

16327
041-067-000-0001
0.5000 AC
041-067-000-0102
35.6530 AC

16943
041-067-000-0165
1.0000 AC
16941
041-067-000-0147
1.0000 AC
340
16939
041-067-000-0146
1.0000 AC

16947
041-067-000-0112
1.0000 AC
041-067-000-0311
2.0000 AC

16947
3.0000 AC
143.95
2A-9

16955
10.0000 AC