

4668B9

Harris Central Appraisal District



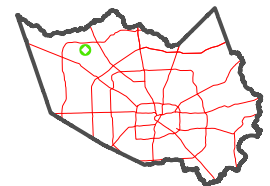
0 45 90 180 Feet

PUBLICATION DATE:
6/22/2023

Geospatial or map data maintained by the Harris Central Appraisal District is for informational purposes and may not have been prepared for or be suitable for legal, engineering, or surveying purposes. It does not represent an on-the-ground survey and only represents the approximate location of property boundaries.



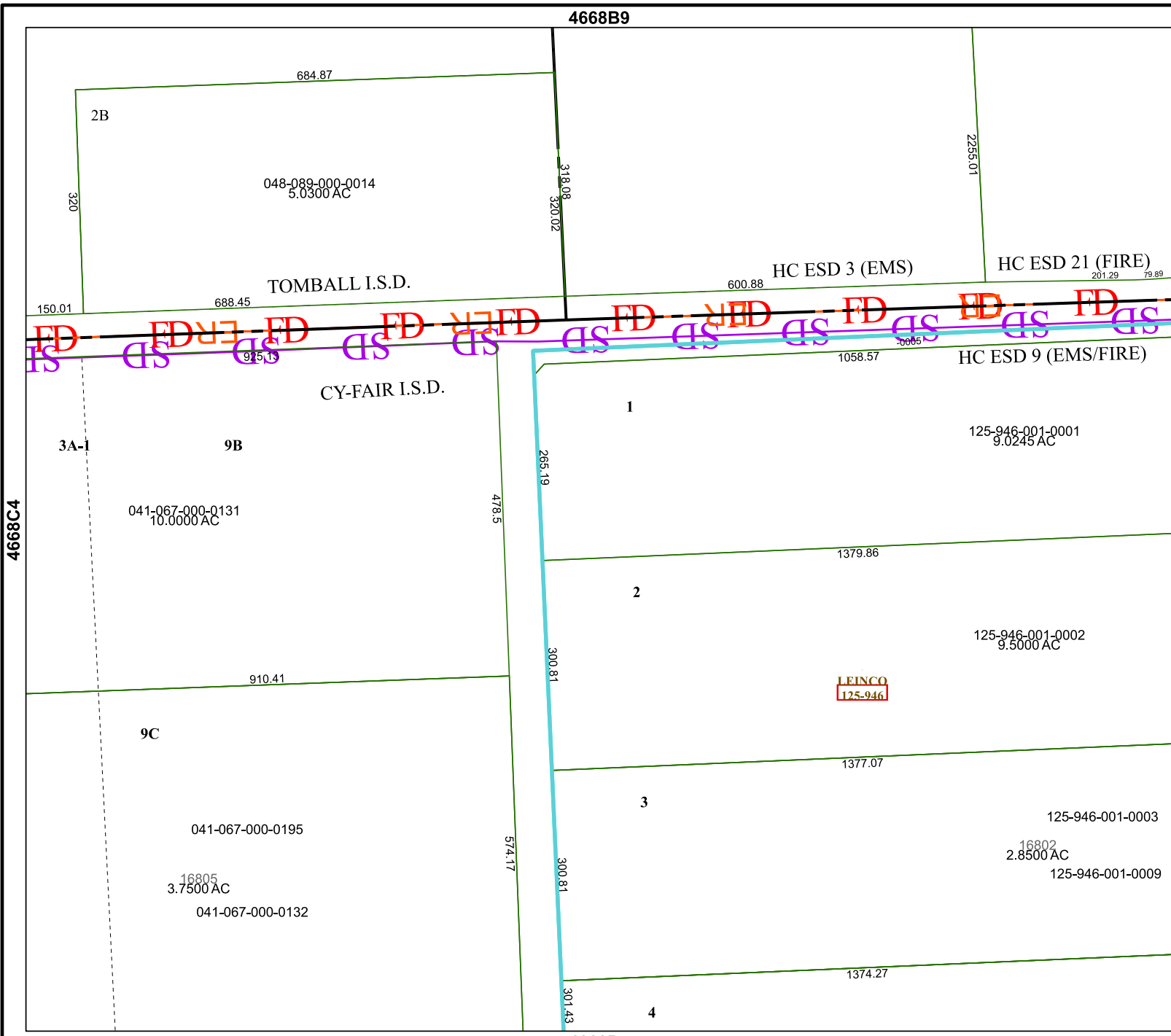
MAP LOCATION



FACET 4668D1

11	12	9	10	11
3	4	1	2	3
7	8	5	6	7

4668D5



4668D2

4668C4

TOMBALL I.S.D.

CY-FAIR I.S.D.

HC ESD 3 (EMS)

HC ESD 21 (FIRE)

HC ESD 9 (EMS/FIRE)

LEINCO
125-946

048-089-000-0014
5.0300 AC

041-067-000-0131
10.0000 AC

041-067-000-0195

16805
3.7500 AC

041-067-000-0132

125-946-001-0001
9.0245 AC

125-946-001-0002
9.5000 AC

125-946-001-0003

16802
2.8500 AC

125-946-001-0009

684.87

2B

688.45

150.01

925.13

320

318.08
320.02

2255.01

600.88

1058.57

3005

3A-1

9B

925.13

1

2

3

4

478.5

265.19

1379.86

300.81

125-946-001-0002
9.5000 AC

910.41

1377.07

574.17

300.81

125-946-001-0003

16802
2.8500 AC

125-946-001-0009

1374.27

301.43