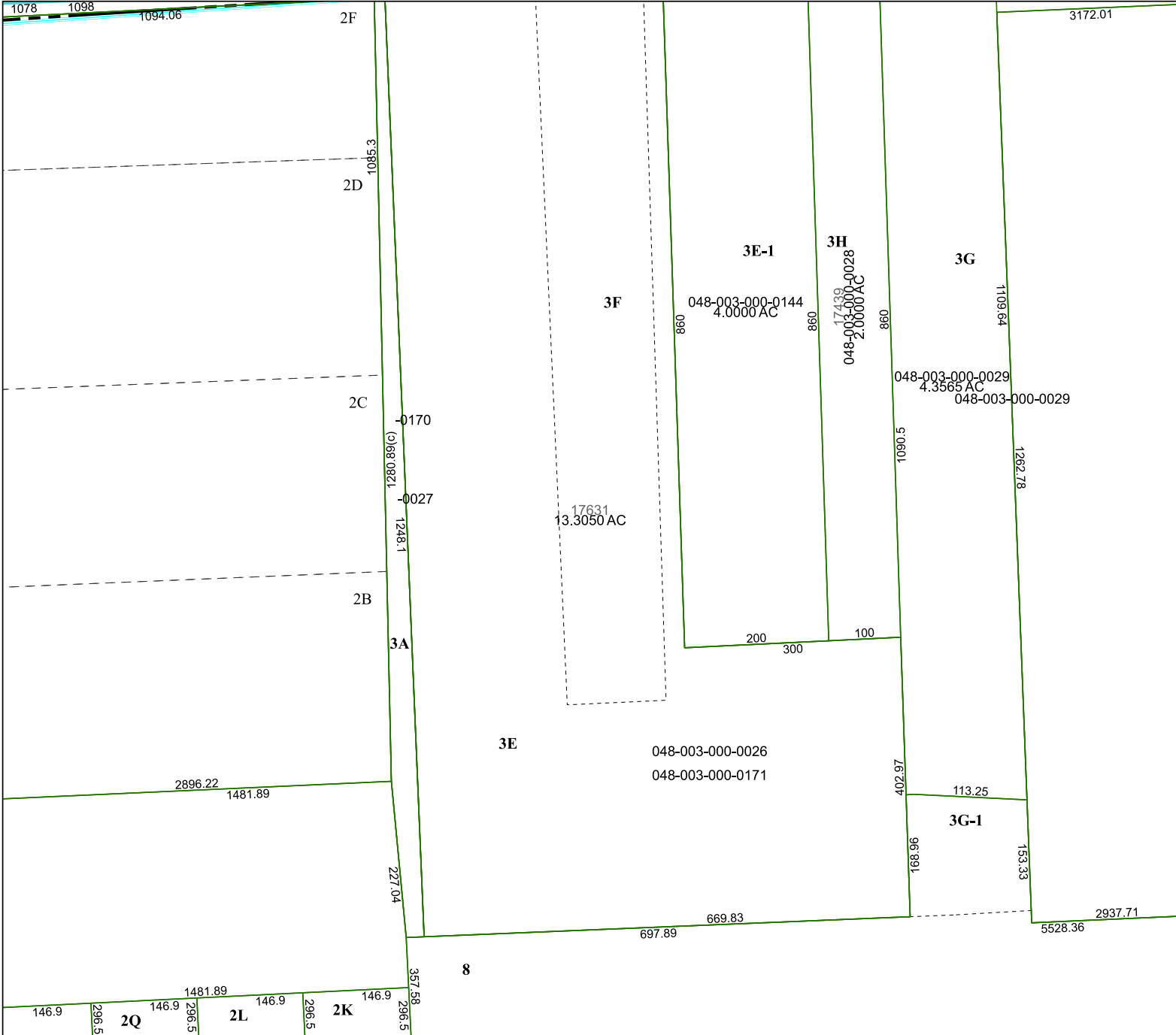
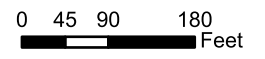


4669A9



4669C5

Harris Central Appraisal District

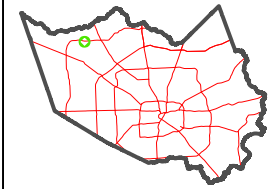


PUBLICATION DATE:
2/28/2024

Geospatial or map data maintained by the Harris Central Appraisal District is for informational purposes and may **not** have been prepared for or be suitable for legal, engineering, or surveying purposes. It does **not** represent an on-the-ground survey and only represents the approximate location of property boundaries.



MAP LOCATION



FACET 4669C1

11	12	9	10	11
3	4	1	2	3
7	8	5	6	7

4569D4

4669C2