

4669B12

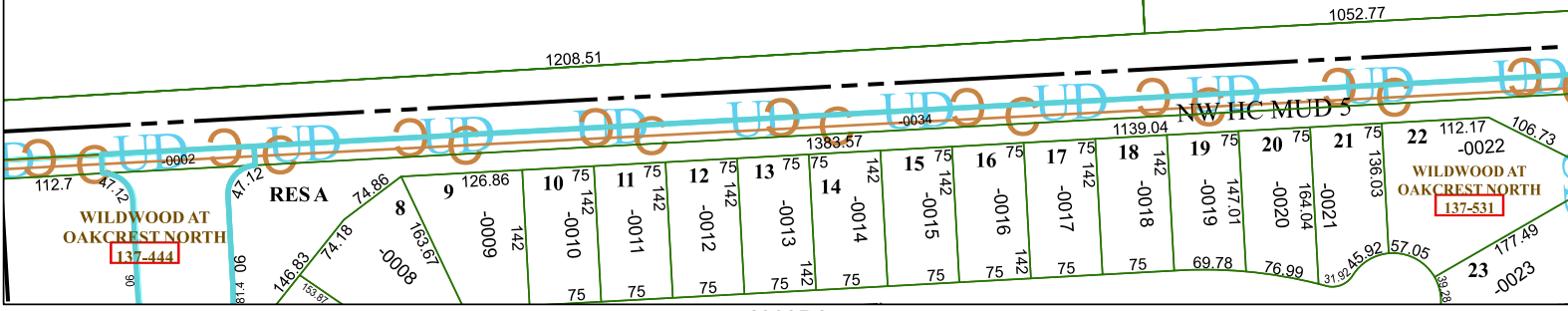
53.0413 AC

4669D3

1963.5
4393.65

1052.77

1208.51



4669D8

Harris Central Appraisal District



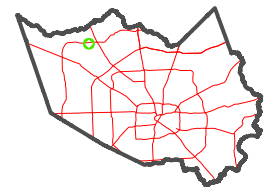
0 45 90 180 Feet

PUBLICATION DATE:
1/5/2023

Geospatial or map data maintained by the Harris Central Appraisal District is for informational purposes and may not have been prepared for or be suitable for legal, engineering, or surveying purposes. It does not represent an on-the-ground survey and only represents the approximate location of property boundaries.



MAP LOCATION



FACET 4669D4

10	11	12	13	10
2	3	4	1	2
6	7	8	5	6