

4671D8

NIKHILL R/P  
131-315

ON THE GO  
139-492

4671D11

TOMBALL  
5A

TREICHEL ROAD  
496

4670B4

# Harris Central Appraisal District

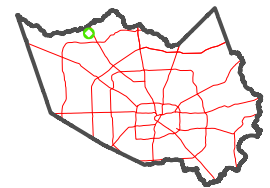


0 45 90 180 Feet

PUBLICATION DATE:  
4/22/2024

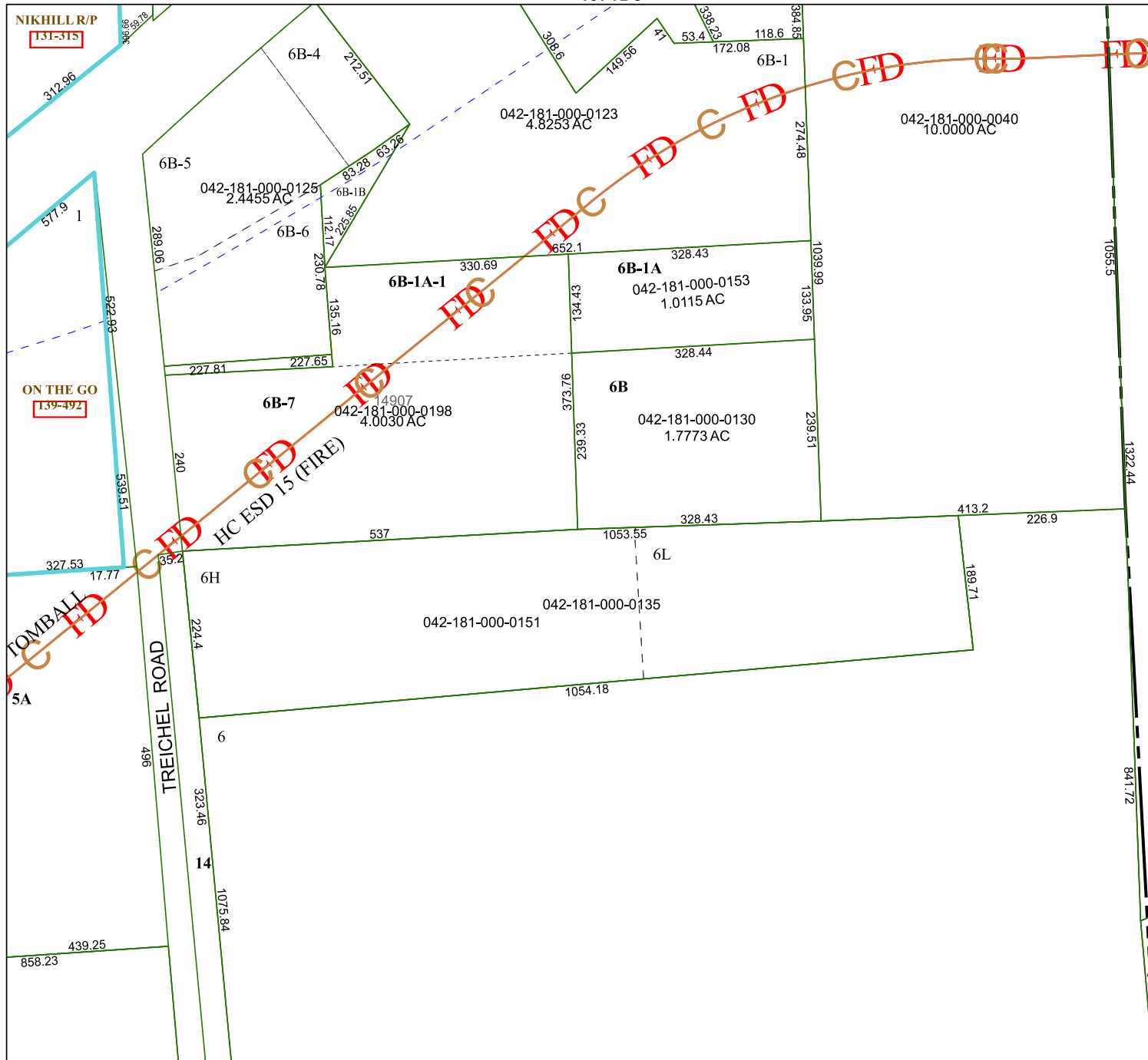
Geospatial or map data maintained by the Harris Central Appraisal District is for informational purposes and may not have been prepared for or be suitable for legal, engineering, or surveying purposes. It does not represent an on-the-ground survey and only represents the approximate location of property boundaries.

MAP LOCATION



## FACET 4671D12

6	7	8	5	6
10	11	12	9	10
2	3	4	1	2



4771C

