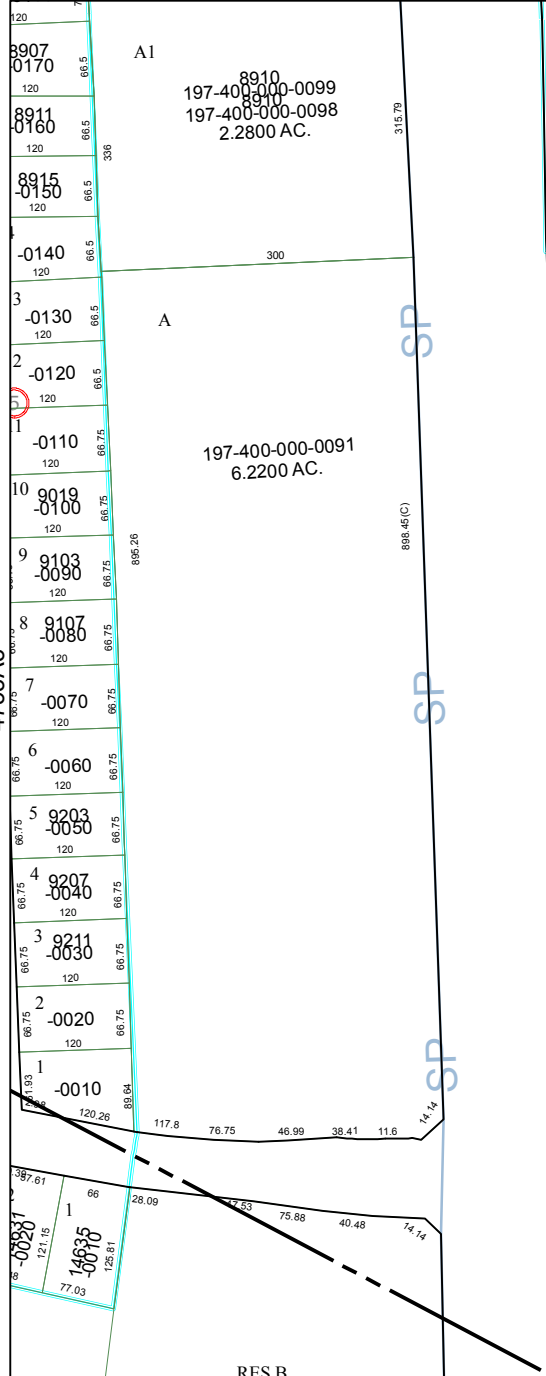


4754C12

135.00	-0.001	124.75	-0.00	115.0	-0.00	100.00	14.00	14.00	60.00	60.00	60.00	60.00	63.00	21
67.02	64.08	69.32	62.18	66.89	60.00	60.00	60.00	60.00	60.00	60.00	60.00	60.00	63.00	21



KINGSBRIDGE COMMERCE PARK
115-842

RES E
197-200-000-0055
9.1921 AC.

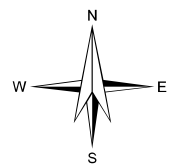
9
197-400-000-0090
31.7570 AC.

H. T. & B. R. R. CO.
A-623

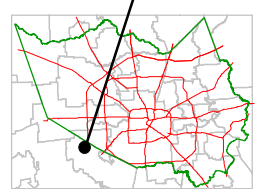
Harris County Appraisal District



0 100 200
PUBLICATION DATE:
5/26/2009



MAP LOCATION



FACET 4753A

1	2	3	4
5	6	7	8
9	10	11	12

4753A8