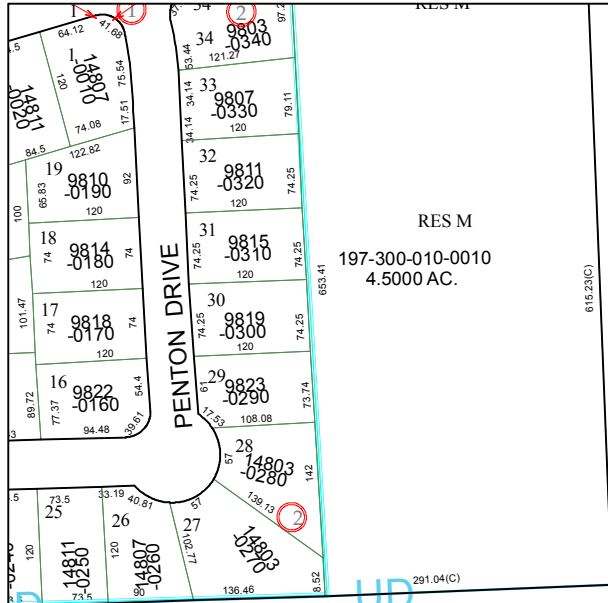


4753A12



RES M
197-300-010-0010
4.5000 AC.

S.H. 6
S.H. 6

J. LEVERTON
A-402

WEST KEEGANS BAYOU I.D.

KINGSBRIDGE M.U.D.
979.24(C)

UD

UD

UD

UD

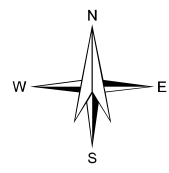
4753C3

AD

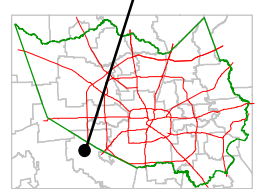
Harris County Appraisal District



PUBLICATION DATE:
5/26/2009



MAP LOCATION



FACET 4753C

1	2	3	4
5	6	7	8
9	10	11	12

4753C8