

# Harris Central Appraisal District

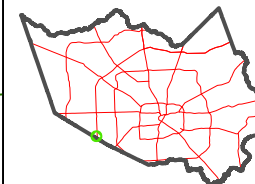


0 45 90 180 Feet

PUBLICATION DATE: 1/5/2023

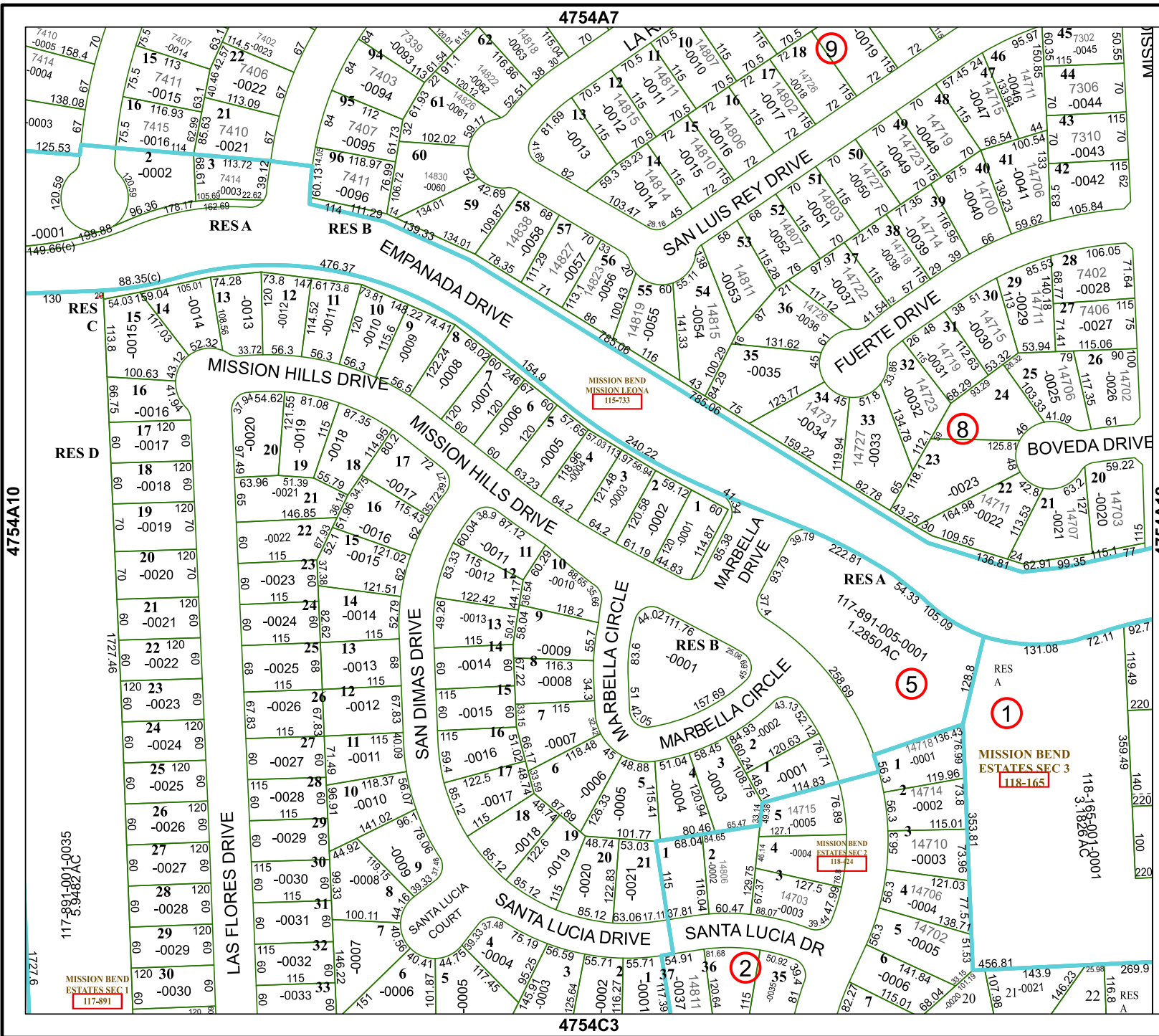
Geospatial or map data maintained by the Harris Central Appraisal District is for informational purposes and may not have been prepared for or be suitable for legal, engineering, or surveying purposes. It does not represent an on-the-ground survey and only represents the approximate location of property boundaries.

## MAP LOCATION



# FACET 4754A11

5	6	7	8	5
9	10	11	12	9
1	2	3	4	1



4754A7

4754C3

4754A10

MISSISSIPPI

4754A12

117-891-001-0035  
5.9482 AC

MISSION BEND  
ESTATES SEC 1  
117-891

MISSION BEND  
ESTATES SEC 3  
118-165

MISSION BEND  
ESTATES SEC 4  
118-24

MISSION BEND  
ESTATES SEC 2  
118-24

MISSION BEND  
ESTATES SEC 3  
118-165

MISSION BEND  
MISSION LEONIA  
115-733

5

1

8

9

2

RES A

RES B

RES C

RES D

RES B

RES A

LAS FLORES DRIVE

SANTA LUCIA COURT

SANTA LUCIA DRIVE

SANTA LUCIA DR

SAN DIMAS DRIVE

MISSION HILLS DRIVE

MISSION HILLS DRIVE

EMPANADA DRIVE

SAN LUIS REY DRIVE

FUERTE DRIVE

BOVEDA DRIVE

MARBELLA DRIVE

MARBELLA DRIVE

MARBELLA DRIVE

MARBELLA DRIVE

MARBELLA DRIVE

MARBELLA DRIVE

MARBELLA DRIVE

MARBELLA DRIVE

MARBELLA DRIVE