

4757D1

4757D9

Harris Central Appraisal District



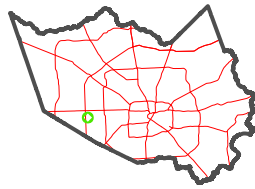
0 45 90 180 Feet

PUBLICATION DATE: 2/13/2023

Geospatial or map data maintained by the Harris Central Appraisal District is for informational purposes and may not have been prepared for or be suitable for legal, engineering, or surveying purposes. It does not represent an on-the-ground survey and only represents the approximate location of property boundaries.

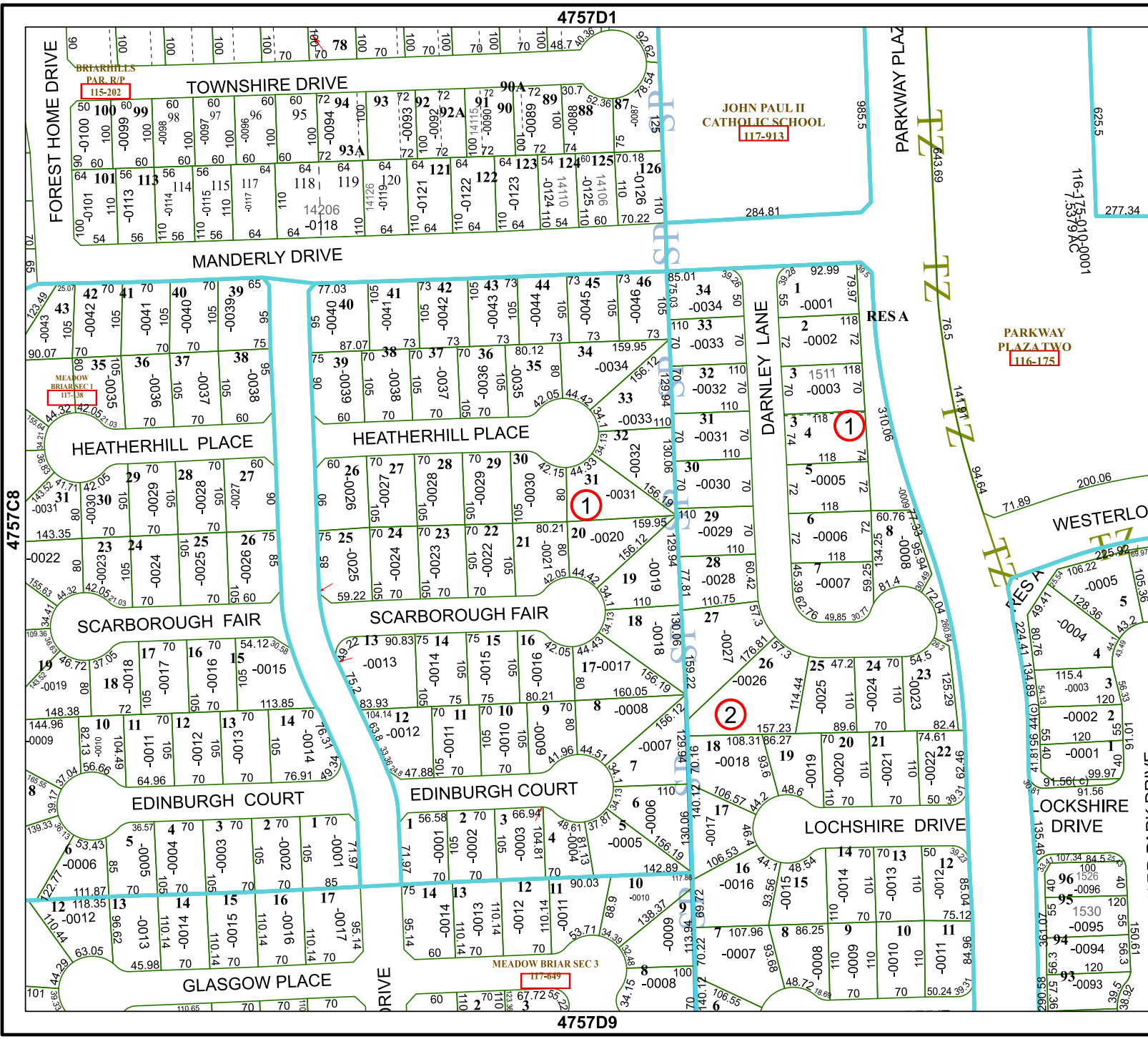


MAP LOCATION



FACET 4757D5

3	4	1	2	3
7	8	5	6	7
11	12	9	10	11



JOHN PAUL II CATHOLIC SCHOOL
117-913

PARKWAY PLAZA TWO
116-175

PAR. R/P
115-202

MEADOW BRIAR SEC 1
117-38

MEADOW BRIAR SEC 3
117-649