

4757D2

Harris Central Appraisal District



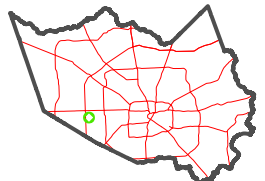
0 45 90 180 Feet

PUBLICATION DATE: 1/5/2023

Geospatial or map data maintained by the Harris Central Appraisal District is for informational purposes and may not have been prepared for or be suitable for legal, engineering, or surveying purposes. It does not represent an on-the-ground survey and only represents the approximate location of property boundaries.

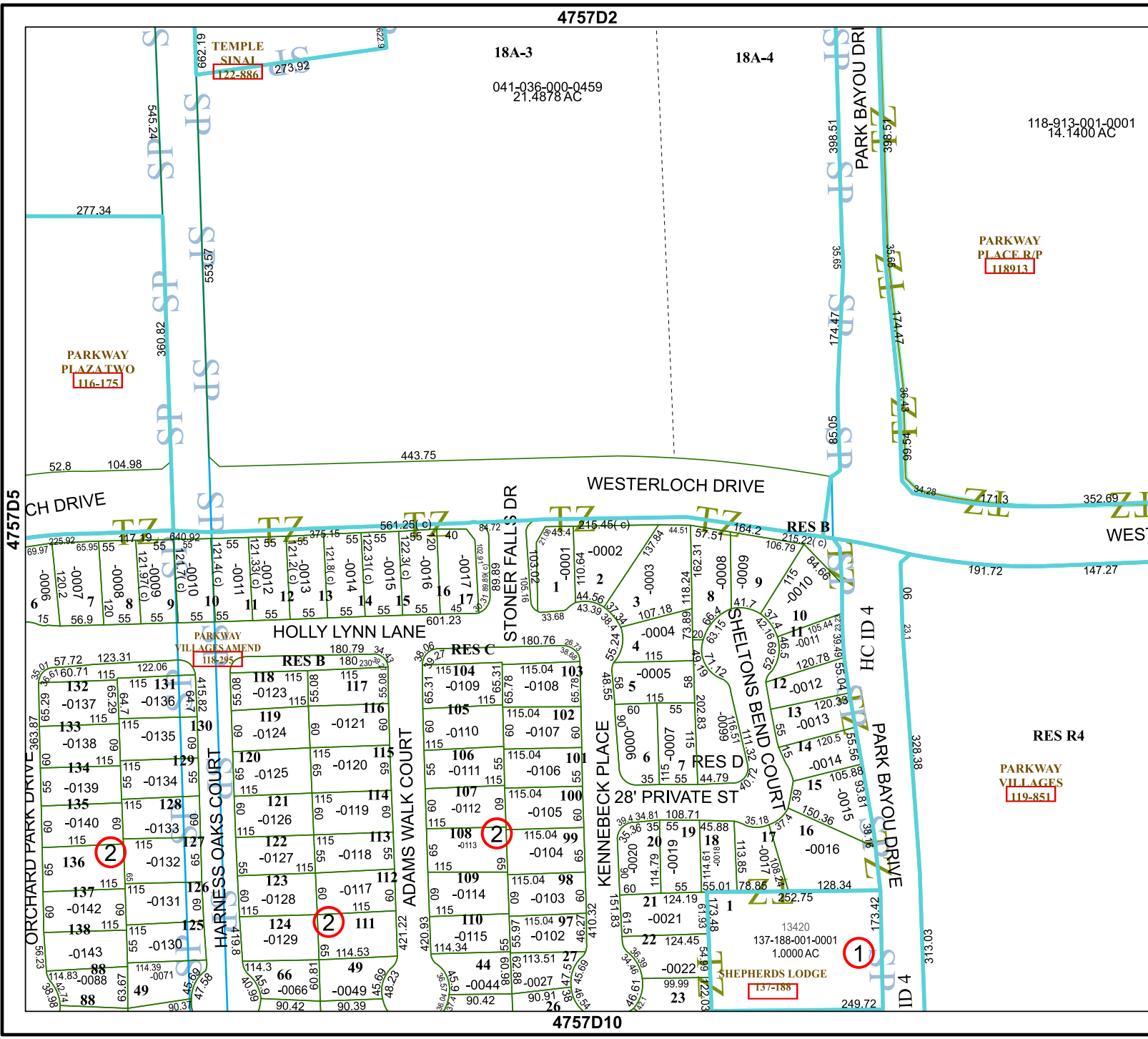


MAP LOCATION



FACET 4757D6

4	1	2	3	4
8	5	6	7	8
12	9	10	11	12



18A-3
041-036-000-0459
21.4878 AC

18A-4

118-913-001-0001
14.1400 AC

PARKWAY PLACE R/P
118913

PARKWAY PLAZA TWO
116-175

RES R4

PARKWAY VILLAGES
119-851

4757D10