

4759A7

# Harris Central Appraisal District



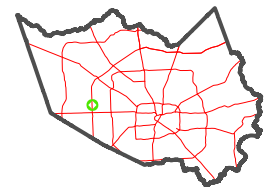
0 45 90 180 Feet

PUBLICATION DATE:  
1/5/2023

Geospatial or map data maintained by the Harris Central Appraisal District is for informational purposes and may **not** have been prepared for or be suitable for legal, engineering, or surveying purposes. It does **not** represent an on-the-ground survey and only represents the approximate location of property boundaries.



### MAP LOCATION



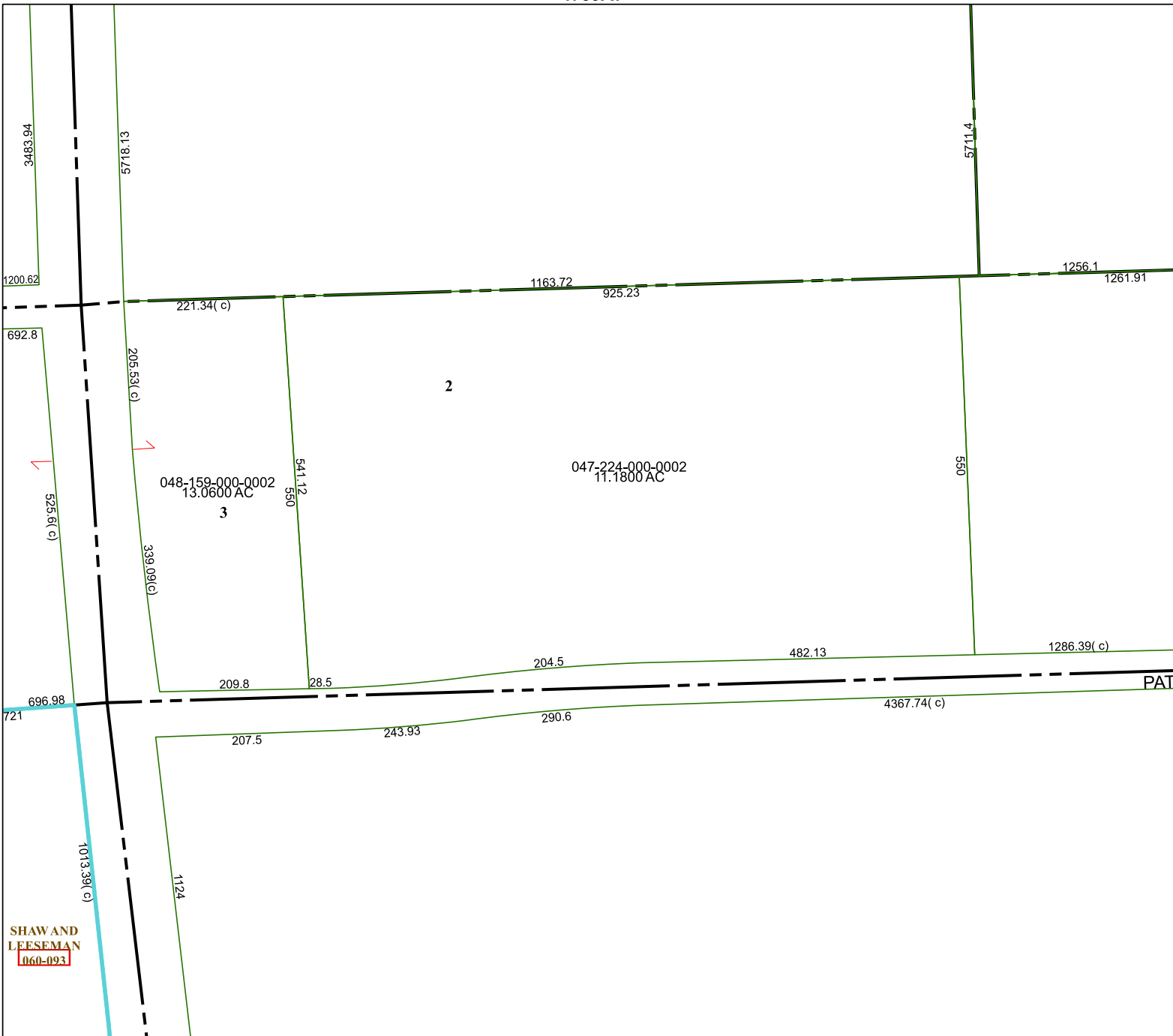
## FACET 4759A11

5	6	7	8	5
9	10	11	12	9
1	2	3	4	1

4759C3

4759A10

4759A12



SHAW AND  
LEESEMAN  
060-093

3483.94  
1200.62  
692.8  
525.6 (c)  
5718.13  
205.53 (c)  
339.09 (c)  
541.12  
550  
209.8  
28.5  
207.5  
243.93  
290.6  
1013.39 (c)  
1124

1163.72  
925.23  
221.34 (c)

5711.4  
1256.1  
1261.91

050  
1286.39 (c)

482.13  
204.5

696.98  
721  
4367.74 (c)