

Harris Central Appraisal District

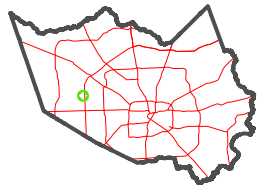


0 45 90 180 Feet

PUBLICATION DATE: 1/5/2023

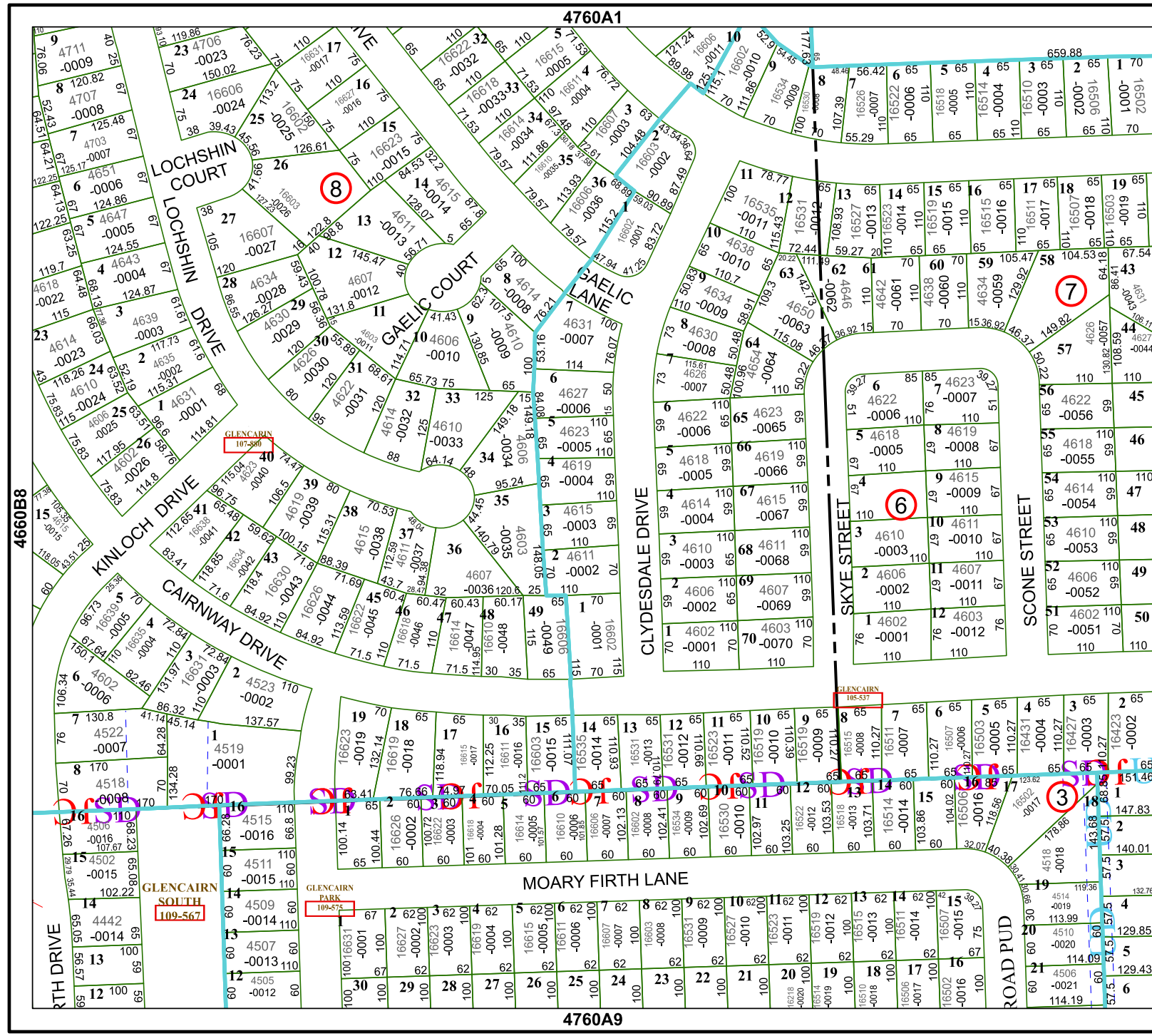
Geospatial or map data maintained by the Harris Central Appraisal District is for informational purposes and may not have been prepared for or be suitable for legal, engineering, or surveying purposes. It does not represent an on-the-ground survey and only represents the approximate location of property boundaries.

MAP LOCATION



FACET 4760A5

3	4	1	2	3
7	8	5	6	7
11	12	9	10	11



4760A1

4760A9

4760A6

4660B8

LOCHSHIN COURT

8

7

6

3

GLENCAIRN SOUTH 109-567

GLENCAIRN PARK 109-571

GLENCAIRN 108-537