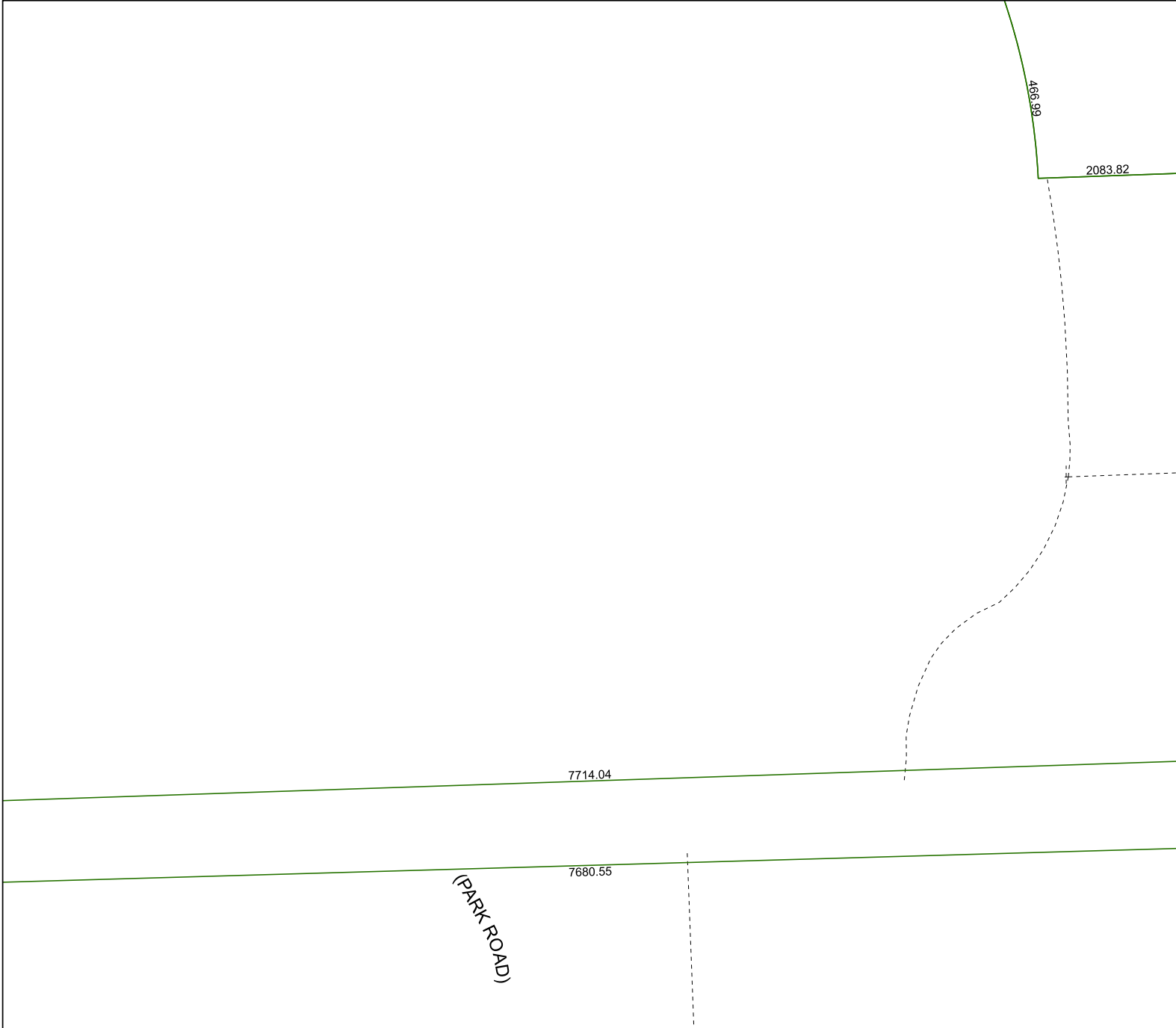


4760B6

4760B9



4760D2

# Harris Central Appraisal District



0 45 90 180 Feet

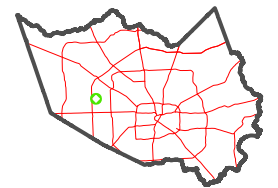
PUBLICATION DATE:  
1/5/2023

Geospatial or map data maintained by the Harris Central Appraisal District is for informational purposes and may **not** have been prepared for or be suitable for legal, engineering, or surveying purposes. It does **not** represent an on-the-ground survey and only represents the approximate location of property boundaries.



4760B11

### MAP LOCATION



## FACET 4760B10

8	5	6	7	8
12	9	10	11	12
4	1	2	3	4