

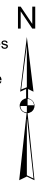
Harris Central Appraisal District



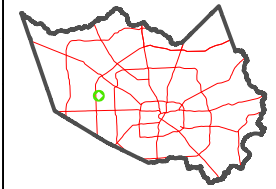
0 45 90 180 Feet

PUBLICATION DATE: 1/5/2023

Geospatial or map data maintained by the Harris Central Appraisal District is for informational purposes and may not have been prepared for or be suitable for legal, engineering, or surveying purposes. It does not represent an on-the-ground survey and only represents the approximate location of property boundaries.



MAP LOCATION



FACET 4760B5

3	4	1	2	3
7	8	5	6	7
11	12	9	10	11

4760B6

4760B9

CITY OF HOUSTON

HC ESD 9 (EMS/FIRE)

BEAR CREEK VILLAGE

RESA

RES B3

RES B4

RES B5

RES B8

RES B9

RES B10

BEAR CREEK VILLAGE B/P 111-858

4760B1

4760A8