

# Harris Central Appraisal District

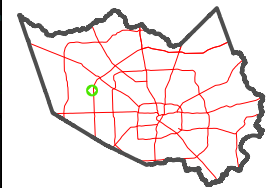


0 45 90 180 Feet

PUBLICATION DATE: 4/22/2024

Geospatial or map data maintained by the Harris Central Appraisal District is for informational purposes and may not have been prepared for or be suitable for legal, engineering, or surveying purposes. It does not represent an on-the-ground survey and only represents the approximate location of property boundaries.

MAP LOCATION

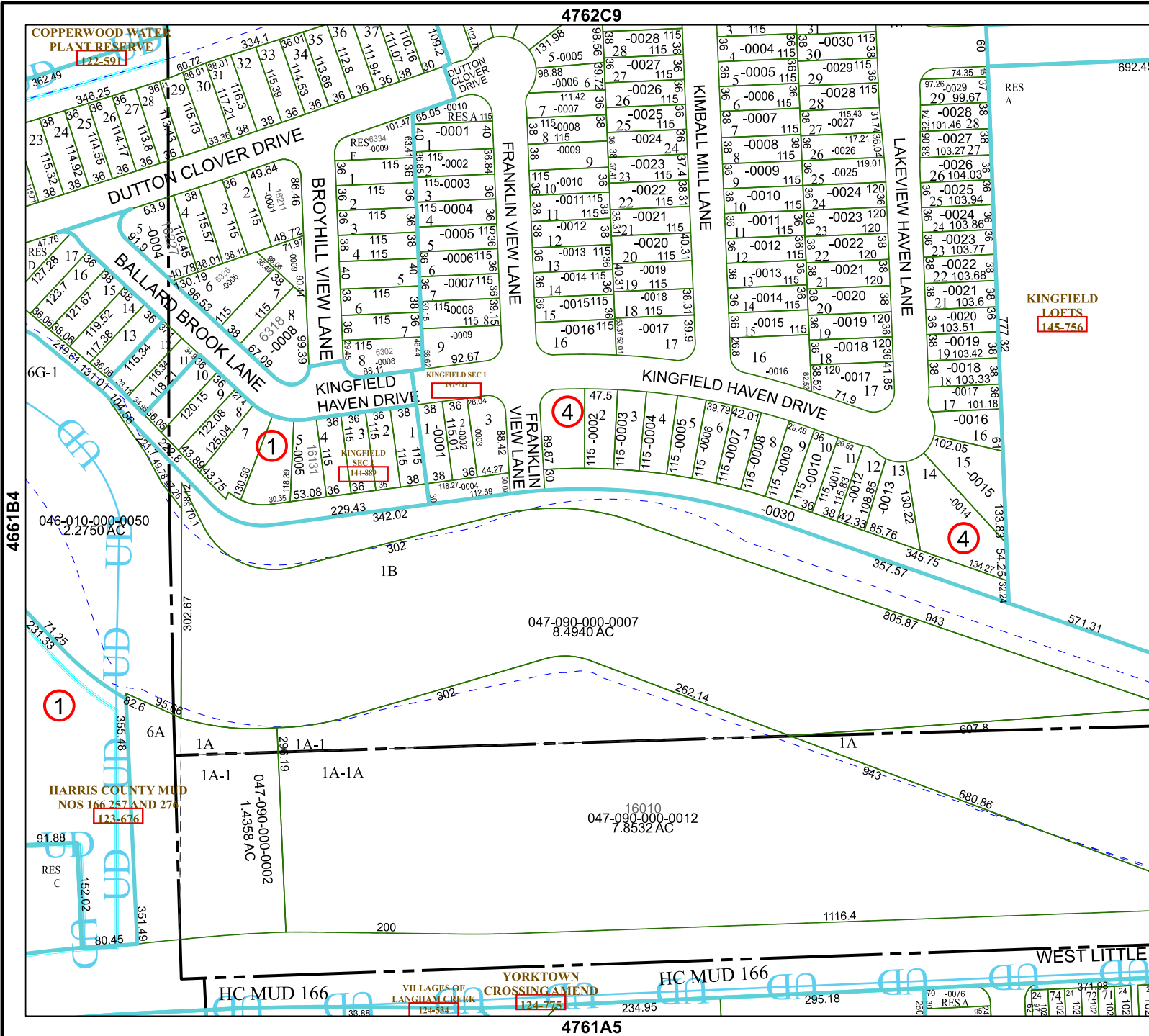


## FACET 4761A1

11	12	9	10	11
3	4	1	2	3
7	8	5	6	7

4762C9

4761A5



KINGFIELD  
LOETS  
145-756

COPPERWOOD WATER  
PLANT RESERVE  
122-591

HARRIS COUNTY MUD  
NOS 166 257 AND 274  
123-676

VILLAGES OF  
LANGHAM CREEK  
124-534

YORKTOWN  
CROSSING AMEND  
124-775

HC MUD 166

WEST LITTLE