

Harris Central Appraisal District

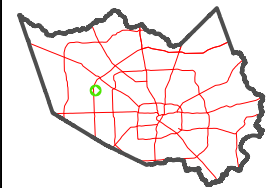


0 50 100 200 Feet

PUBLICATION DATE:
12/8/2025

Geospatial or map data maintained by the Harris Central Appraisal District is for informational purposes and may not have been prepared for or be suitable for legal, engineering, or surveying purposes. It does not represent an on-the-ground survey and only represents the approximate location of property boundaries.

MAP LOCATION

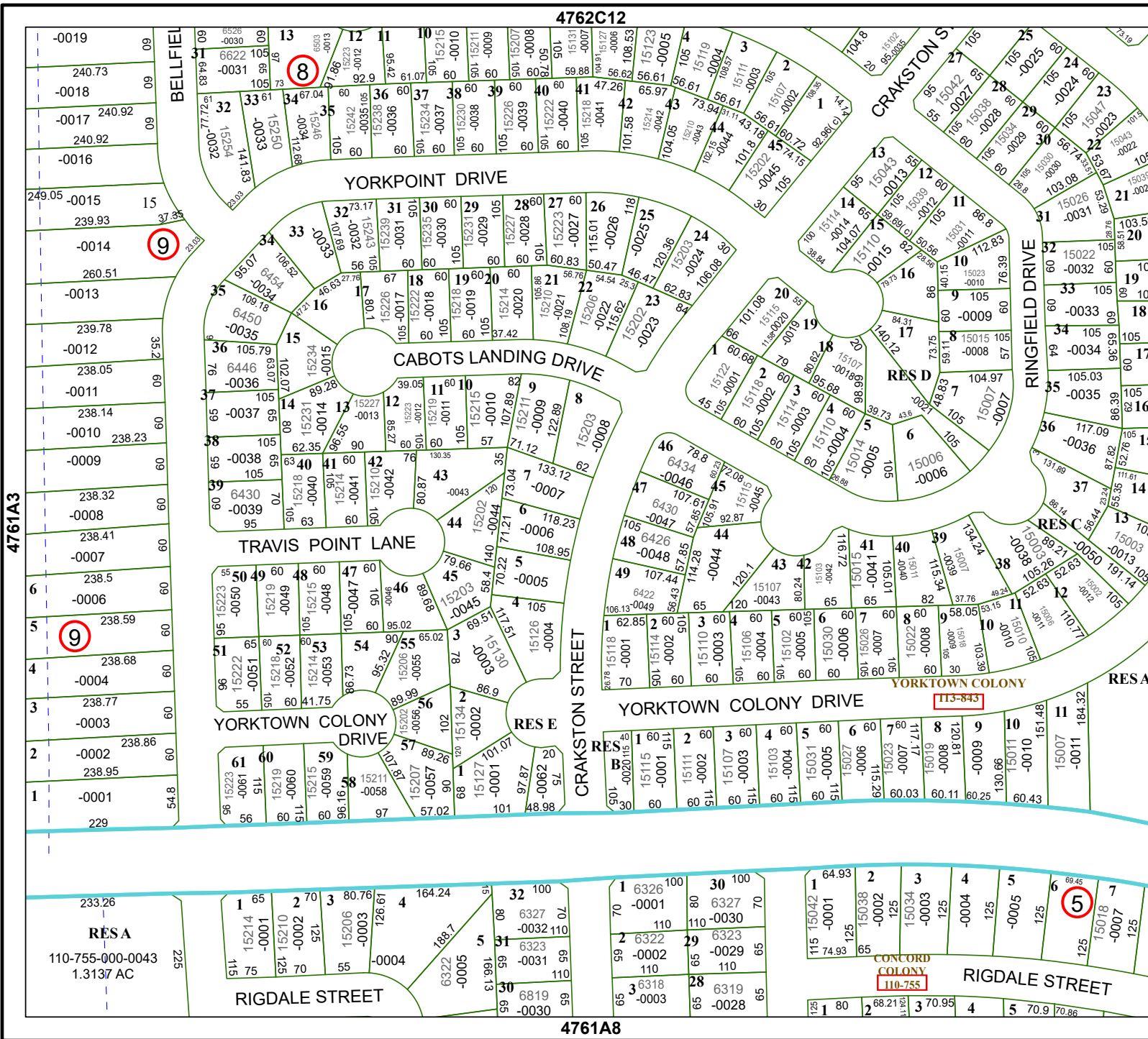


FACET 4761A4

10	11	12	9	10
2	3	4	1	2
6	7	8	5	6

4762C12

4761A8



4761A3

4761B1

RESA
110-755-000-0043
1.3137 AC

CONCORD COLONY
110-755

RIGDALE STREET