

Harris Central Appraisal District

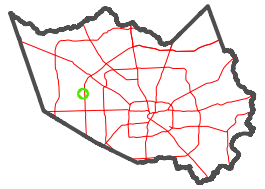


0 45 90 180 Feet

PUBLICATION DATE: 4/24/2023

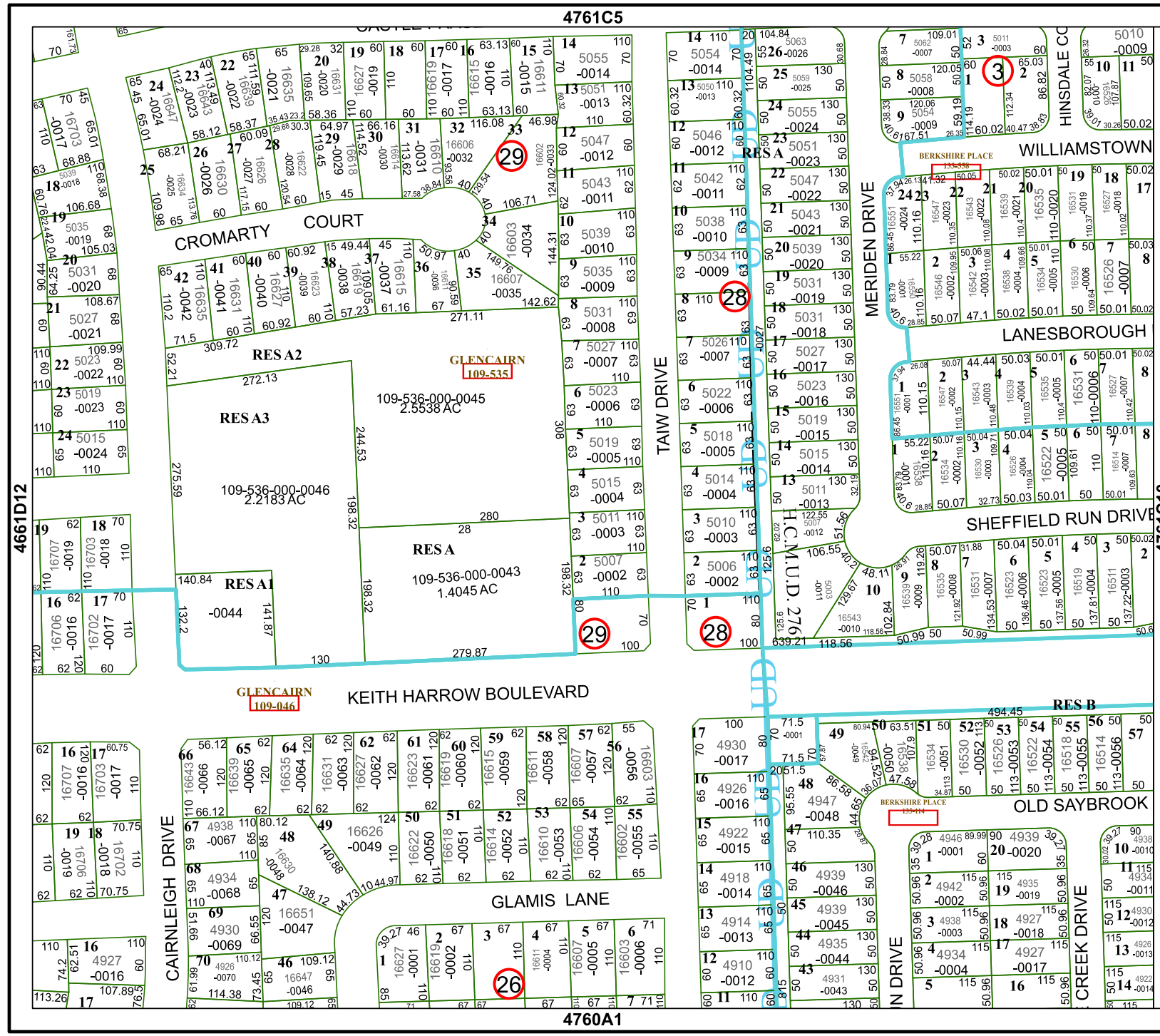
Geospatial or map data maintained by the Harris Central Appraisal District is for informational purposes and may not be prepared for or be suitable for legal, engineering, or surveying purposes. It does not represent an on-the-ground survey and only represents the approximate location of property boundaries.

MAP LOCATION



FACET 4761C9

7	8	5	6	7
11	12	9	10	11
3	4	1	2	3



4661D12

4761C5

4760A1

4761C10