

Harris Central Appraisal District

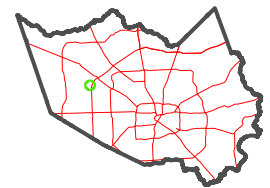


0 45 90 180 Feet

PUBLICATION DATE: 1/5/2023

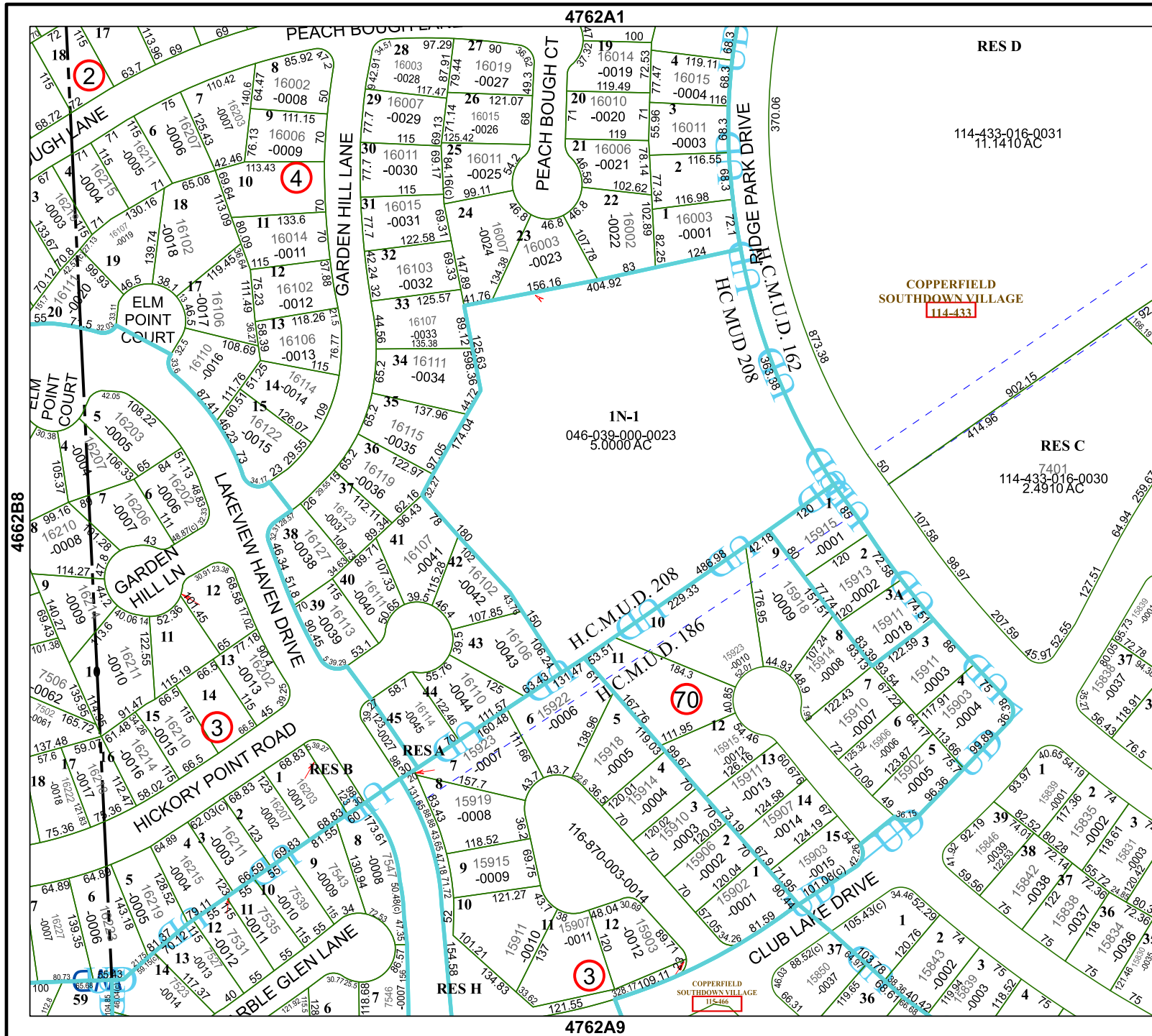
Geospatial or map data maintained by the Harris Central Appraisal District is for informational purposes and may not have been prepared for or be suitable for legal, engineering, or surveying purposes. It does not represent an on-the-ground survey and only represents the approximate location of property boundaries.

MAP LOCATION



FACET 4762A5

3	4	1	2	3
7	8	5	6	7
11	12	9	10	11



4762A1

RES D

114-433-016-0031
11.1410 AC

COPPERFIELD
SOUTHDOWN VILLAGE
114-433

1N-1
046-039-000-0023
5.0000 AC

RES C

7401
114-433-016-0030
2.4910 AC

4762A9

COPPERFIELD
SOUTHDOWN VILLAGE
115-466