

4763B7

044-108-000-0073  
4.8800 AC

SATSUMA STATION  
INDUSTRIAL PARK PAR R/P  
130-744

130-744-001-0001  
19.2630 AC

# Harris Central Appraisal District

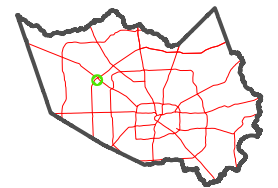


0 45 90 180  
Feet

PUBLICATION DATE:  
1/9/2025

Geospatial or map data maintained by the Harris Central Appraisal District is for informational purposes and may not have been prepared for or be suitable for legal, engineering, or surveying purposes. It does not represent an on-the-ground survey and only represents the approximate location of property boundaries.

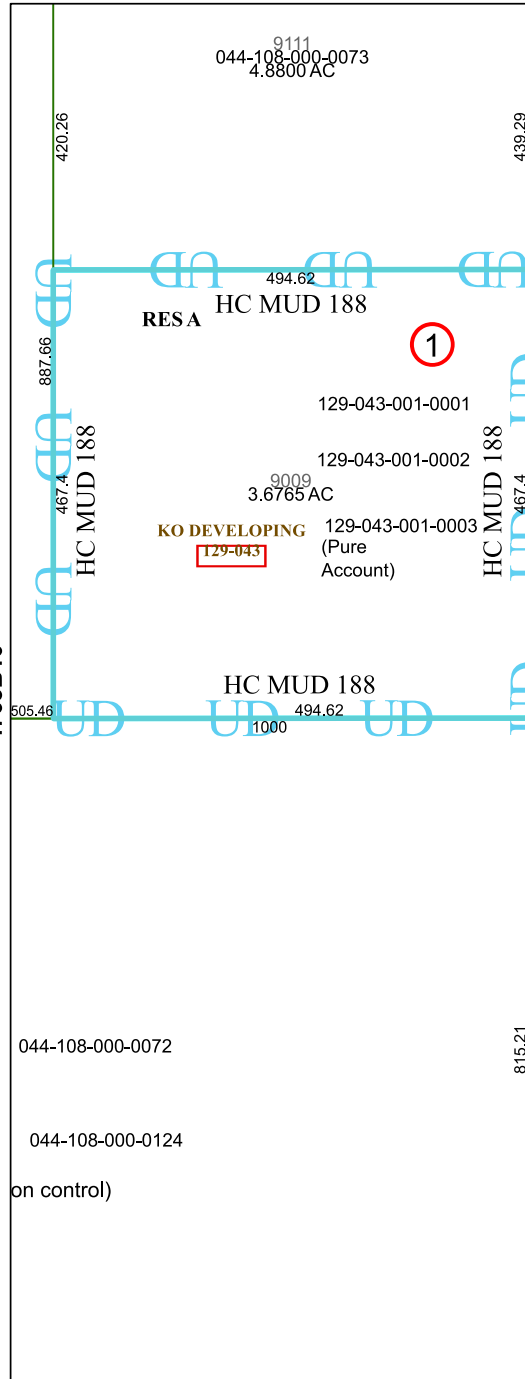
MAP LOCATION



## FACET 4763B11

5	6	7	8	5
9	10	11	12	9
1	2	3	4	1

4763D3



JACKRABBIT ROAD

HC MUD 188

RES E

RES B

130-744-001-0005  
4.8837 AC

4763B10

4763B12

