

# Harris Central Appraisal District

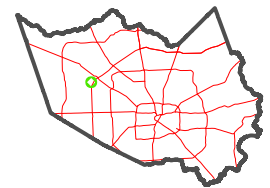


0 45 90 180 Feet

PUBLICATION DATE:  
1/5/2023

Geospatial or map data maintained by the Harris Central Appraisal District is for informational purposes and may not have been prepared for or be suitable for legal, engineering, or surveying purposes. It does not represent an on-the-ground survey and only represents the approximate location of property boundaries.

MAP LOCATION

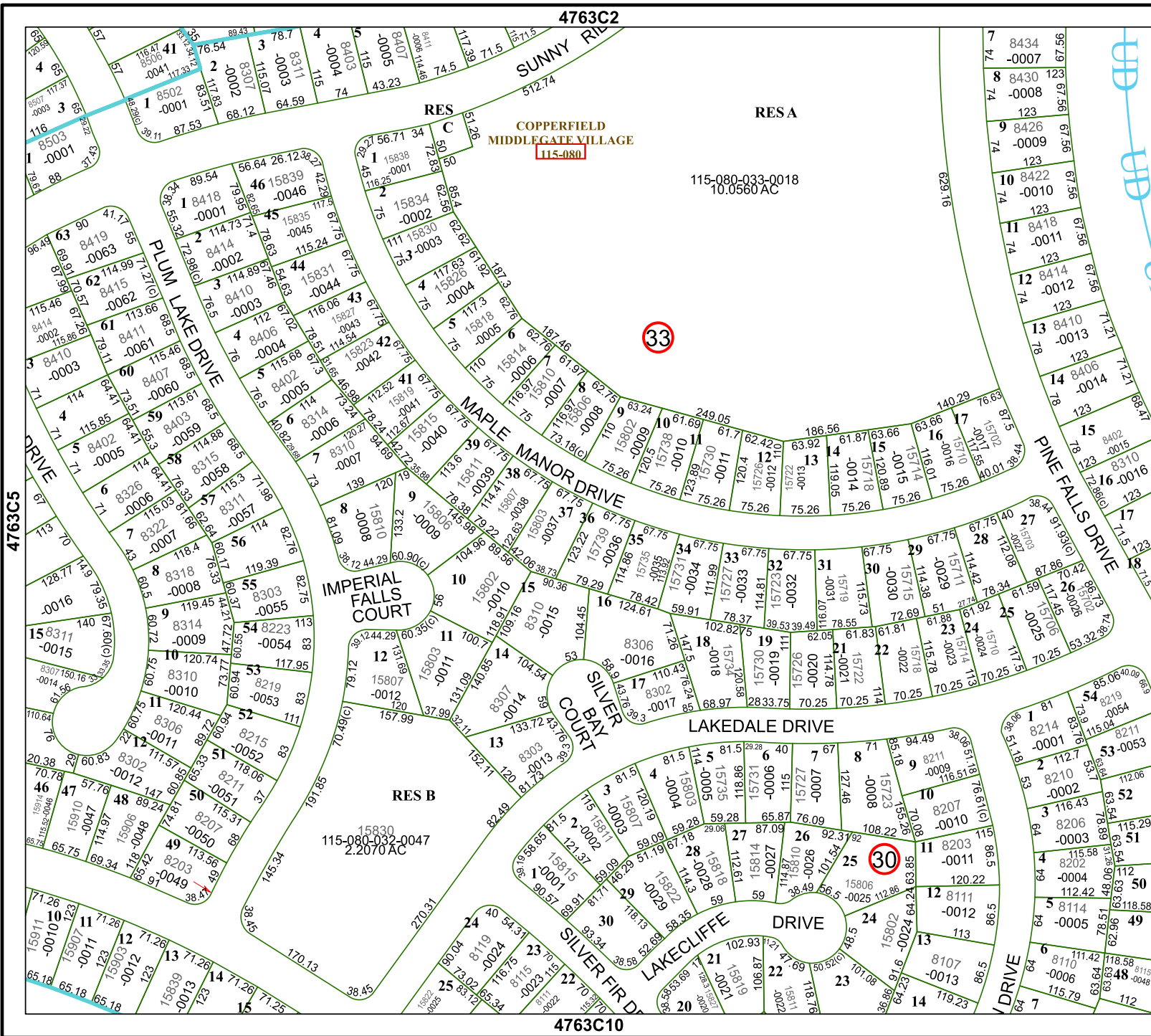


## FACET 4763C6

4	1	2	3	4
8	5	6	7	8
12	9	10	11	12

4763C2

4763C10



RES  
COPPERFIELD  
MIDDLEGATE VILLAGE  
115-080

115-080-033-0018  
10.0560 AC

RES B  
115-080-032-0047  
2.2070 AC

4763C5

4763C7

4763C1

4763C8

4763C9

4763C11