

Harris Central Appraisal District



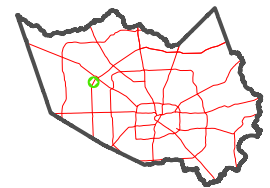
0 45 90 180 Feet

PUBLICATION DATE:
12/30/2023

Geospatial or map data maintained by the Harris Central Appraisal District is for informational purposes and may not have been prepared for or be suitable for legal, engineering, or surveying purposes. It does not represent an on-the-ground survey and only represents the approximate location of property boundaries.



MAP LOCATION

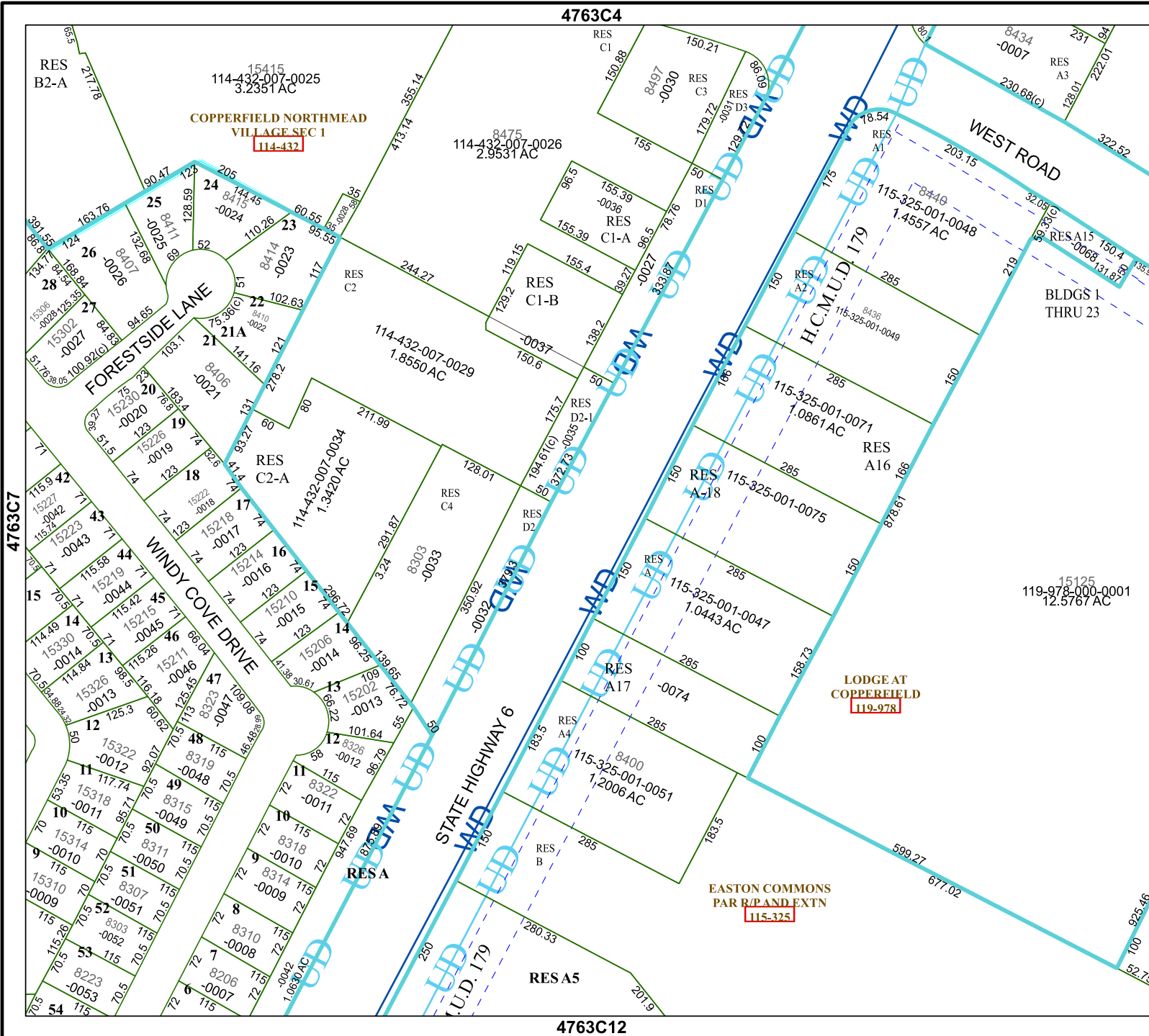


FACET 4763C8

2	3	4	5	6
6	7	8	9	10
10	11	12	1	2

4763C4

4763C12



COPPERFIELD NORTHMEAD
VILLAGE SEC 1
114-432

H.C.M.U.D. 179

LODGE AT
COPPERFIELD
119-978

EASTON COMMONS
PAR R/P AND EXTN
115-325

BLDGS 1
THRU 23

4763C7

4763D5