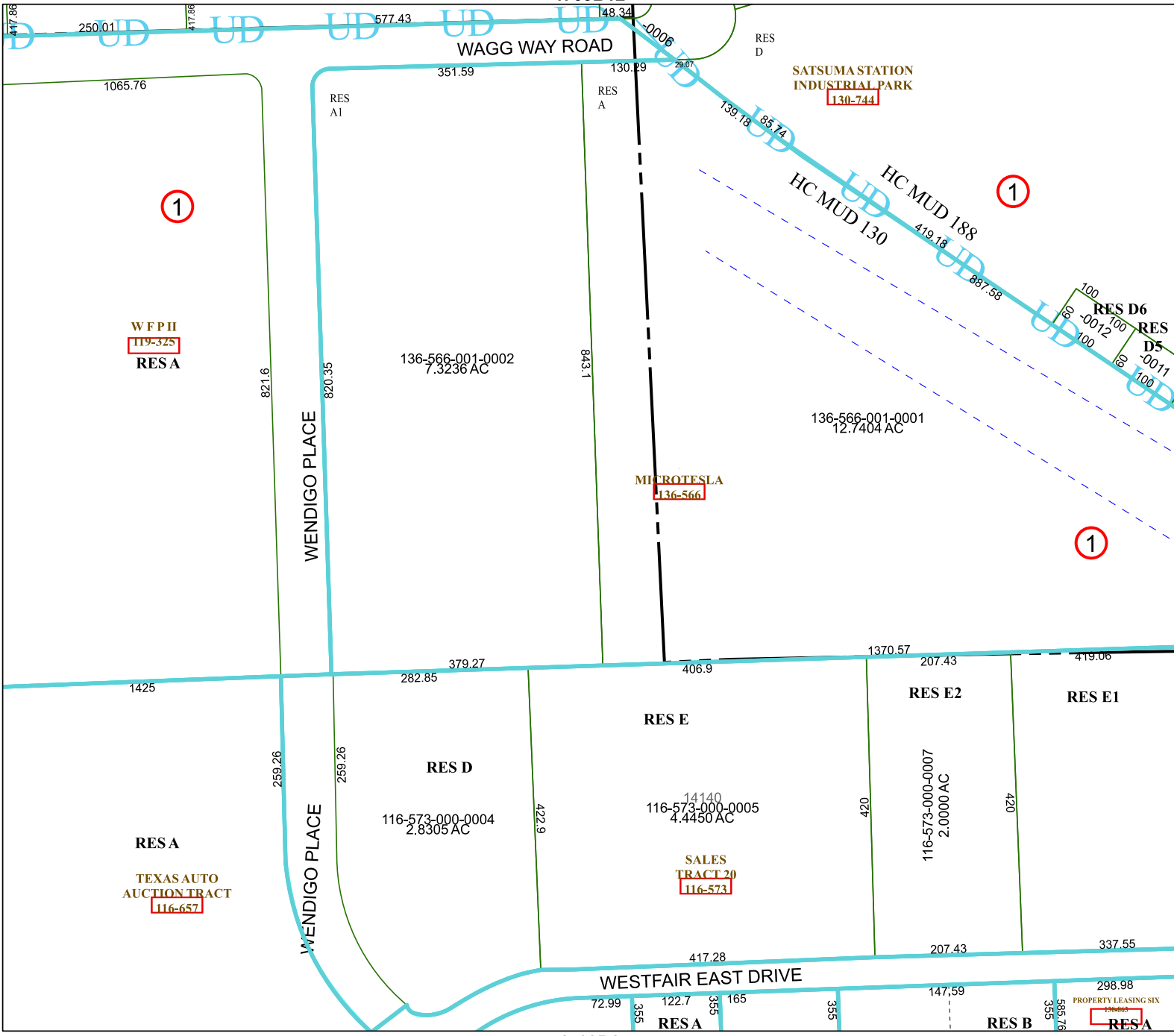


4763B12



Harris Central Appraisal District

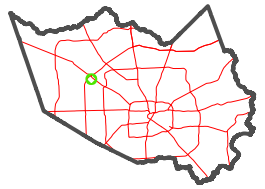


0 45 90 180 Feet

PUBLICATION DATE: 1/9/2025

Geospatial or map data maintained by the Harris Central Appraisal District is for informational purposes and may not have been prepared for or be suitable for legal, engineering, or surveying purposes. It does not represent an on-the-ground survey and only represents the approximate location of property boundaries.

MAP LOCATION



FACET 4763D4

10	11	12	9	10
2	3	4	1	2
6	7	8	5	6

4763D8

4763D3

4863C1