

# Harris Central Appraisal District

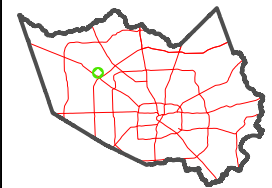


0 45 90 180 Feet

PUBLICATION DATE:  
3/11/2024

Geospatial or map data maintained by the Harris Central Appraisal District is for informational purposes and may not have been prepared for or be suitable for legal, engineering, or surveying purposes. It does not represent an on-the-ground survey and only represents the approximate location of property boundaries.

### MAP LOCATION

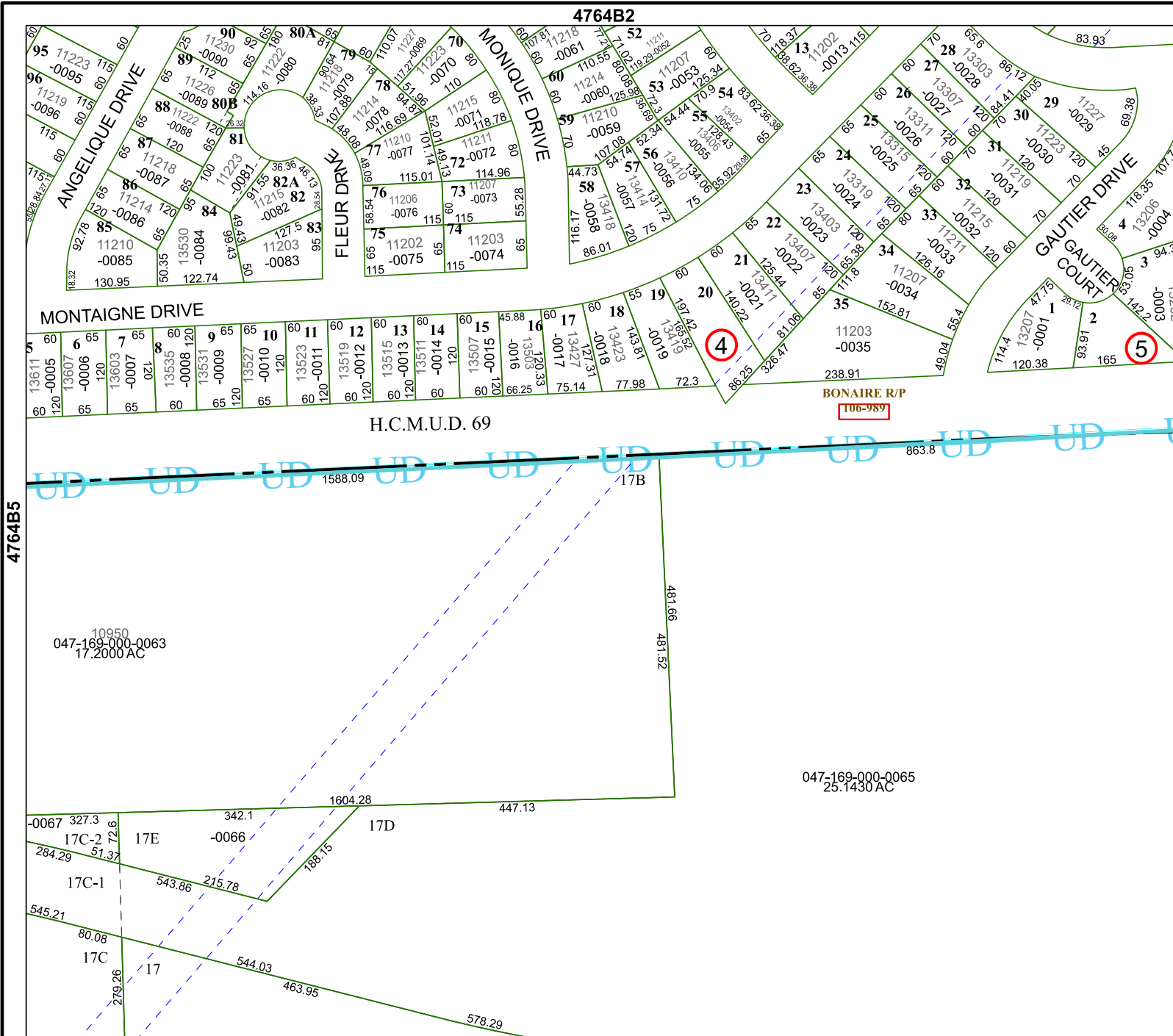


## FACET 4764B6

4	1	2	3	4
8	5	6	7	8
12	9	10	11	12

4764B2

4764B10



4764B5

4764B7

H.C.M.U.D. 69

047-169-000-0065  
25.1430 AC

047-169-000-0063  
17.2000 AC

