

Harris Central Appraisal District

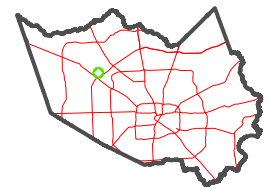


0 45 90 180 Feet

PUBLICATION DATE: 1/5/2023

Geospatial or map data maintained by the Harris Central Appraisal District is for informational purposes and may not have been prepared for or be suitable for legal, engineering, or surveying purposes. It does not represent an on-the-ground survey and only represents the approximate location of property boundaries.

MAP LOCATION

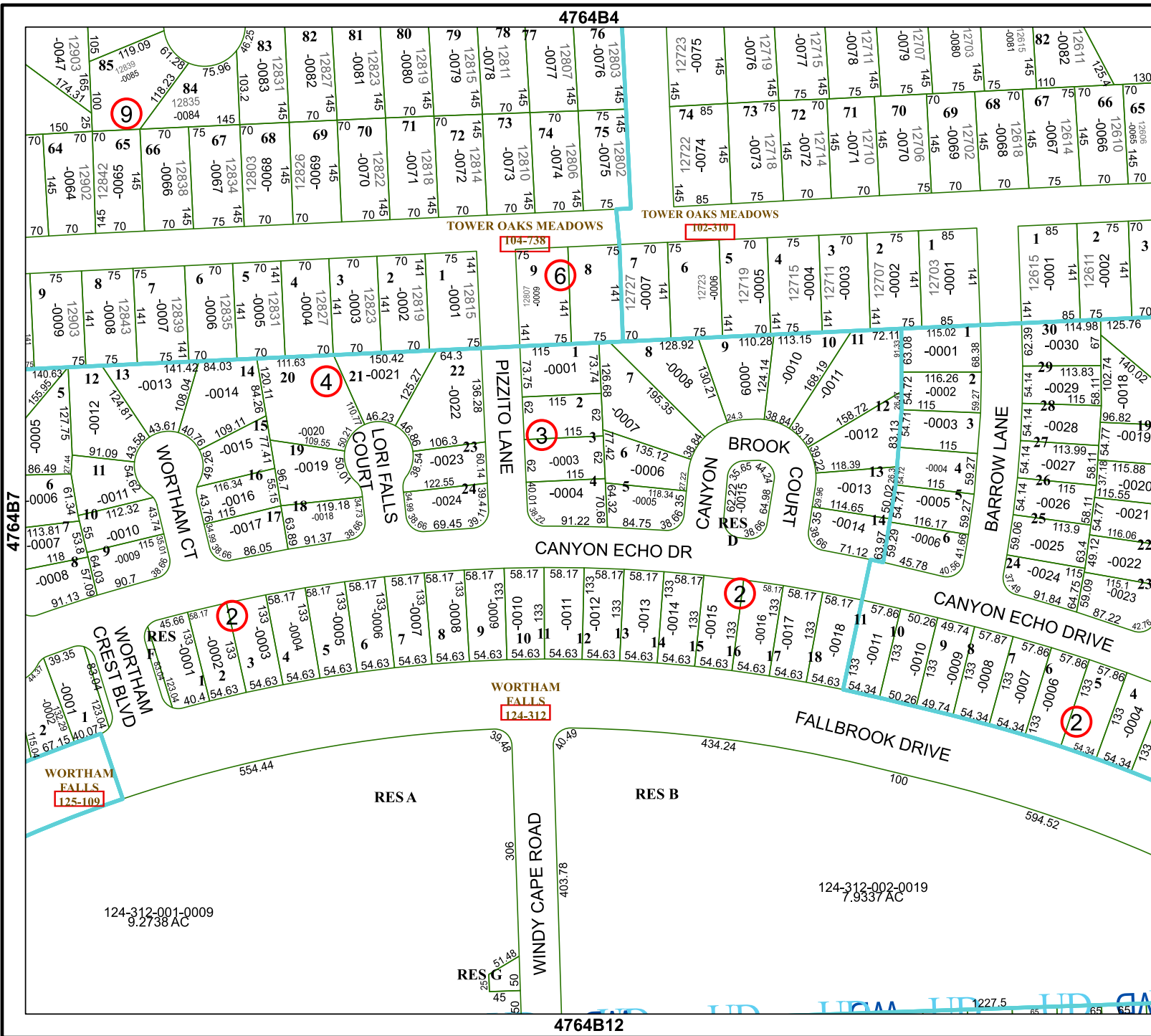


FACET 4764B8

2	3	4	1	2
6	7	8	5	6
10	11	12	9	10

4764B4

4764B12



4764B7

4864A5

124-312-001-0009
9.2738 AC

124-312-002-0019
7.9337 AC

1227.5