

Harris Central Appraisal District

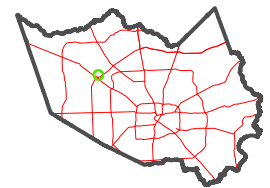


0 45 90 180 Feet

PUBLICATION DATE:
3/11/2024

Geospatial or map data maintained by the Harris Central Appraisal District is for informational purposes and may not have been prepared for or be suitable for legal, engineering, or surveying purposes. It does not represent an on-the-ground survey and only represents the approximate location of property boundaries.

MAP LOCATION

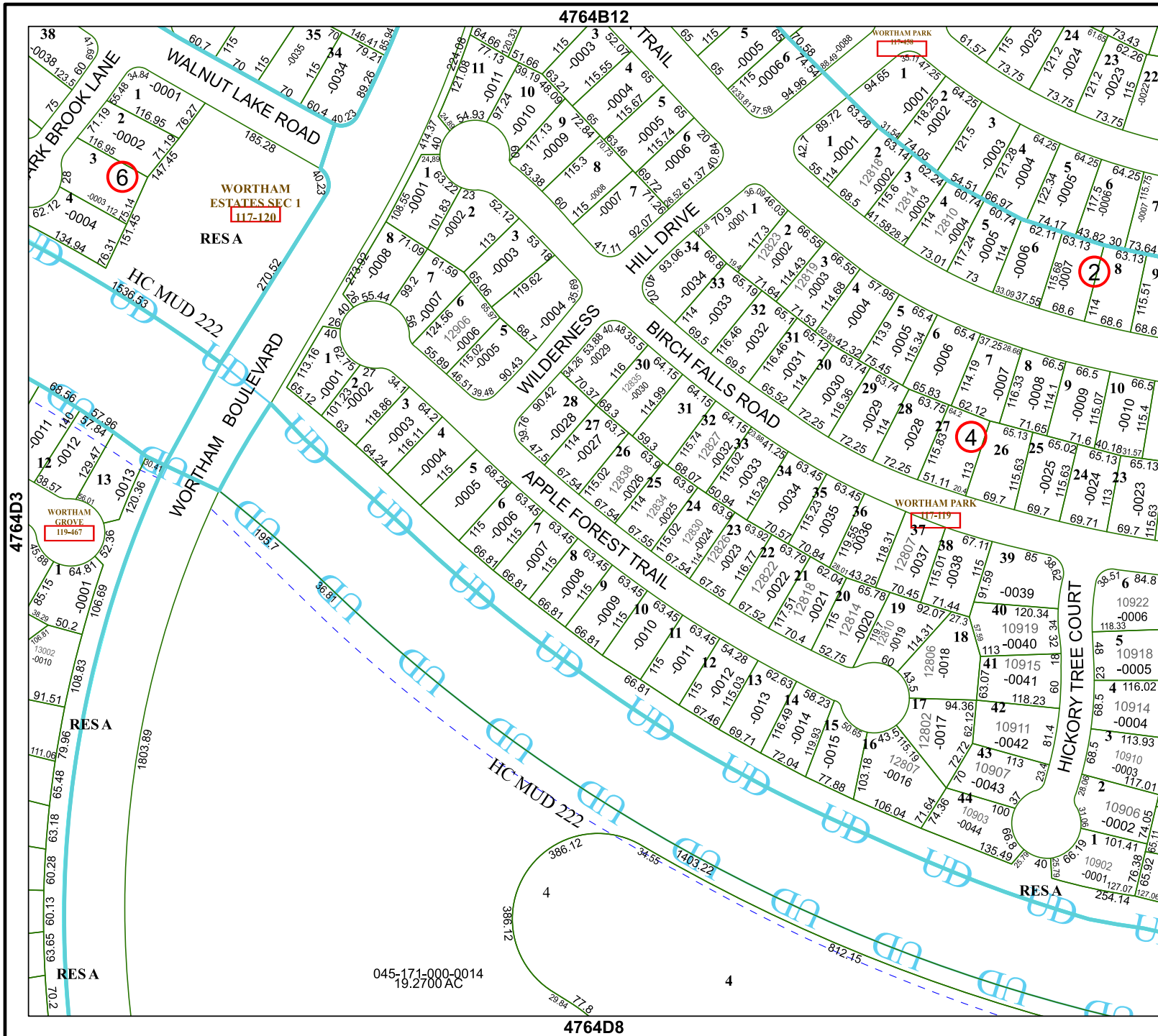


FACET 4764D4

10	11	12	9	10
2	3	4	1	2
6	7	8	5	6

4764B12

4764D8



045-171-000-0014
19.2700 AC

4

4864C1

4764D3

