

Harris Central Appraisal District

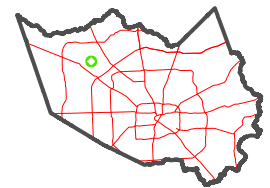


0 45 90 180 Feet

PUBLICATION DATE:
12/30/2023

Geospatial or map data maintained by the Harris Central Appraisal District is for informational purposes and may not have been prepared for or be suitable for legal, engineering, or surveying purposes. It does not represent an on-the-ground survey and only represents the approximate location of property boundaries.

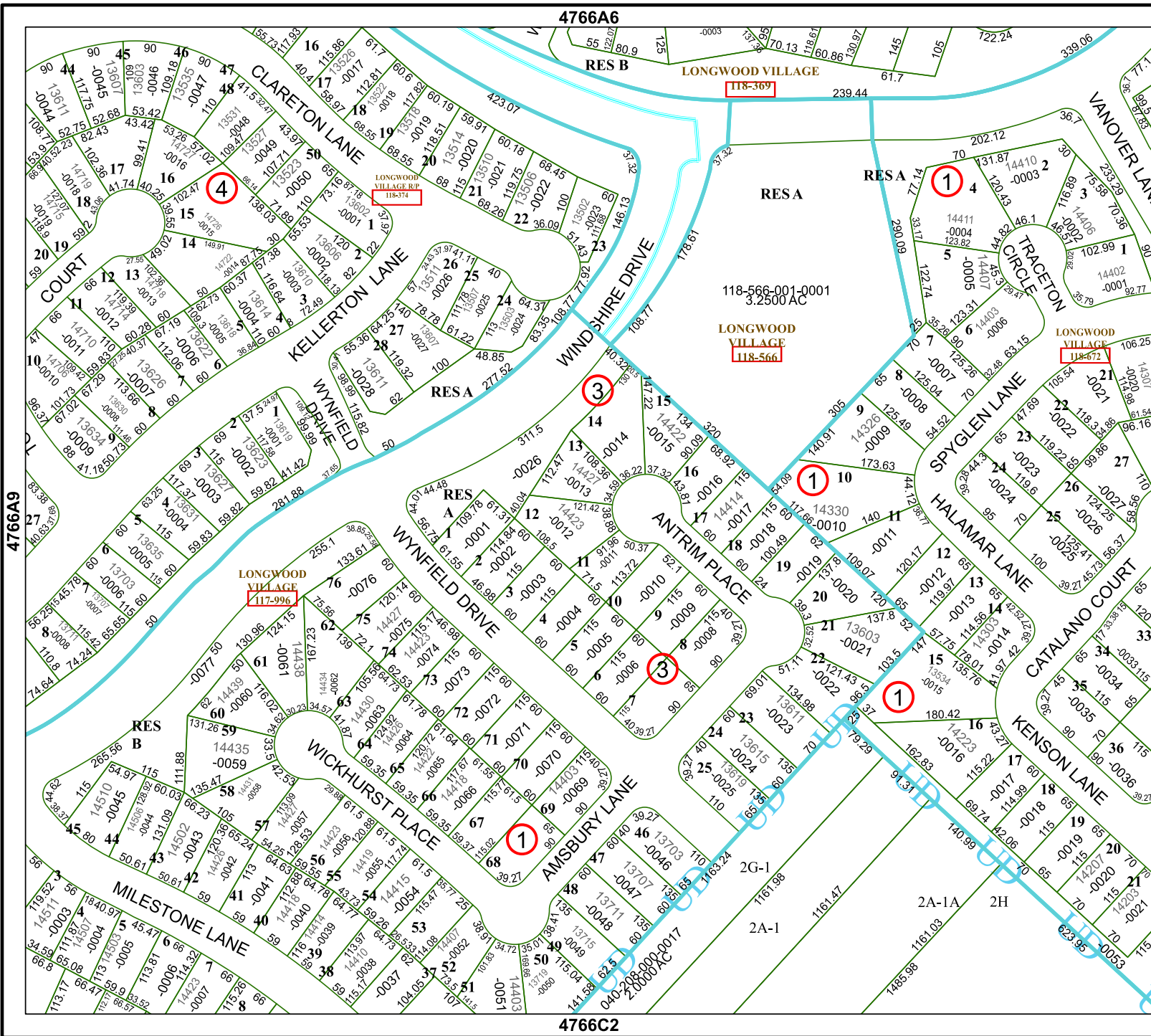
MAP LOCATION



FACET

4766A10

8	5	6	7	8
12	9	10	11	12
4	1	2	3	4



4766A6

RES B

LONGWOOD VILLAGE

118-569

RESA

RESA

LONGWOOD VILLAGE

118-566

118-566-001-0001
3.2500 AC

LONGWOOD VILLAGE

118-672

4766C2

4766A9

4766A11

2G-1

2A-1

2A-1A

2H