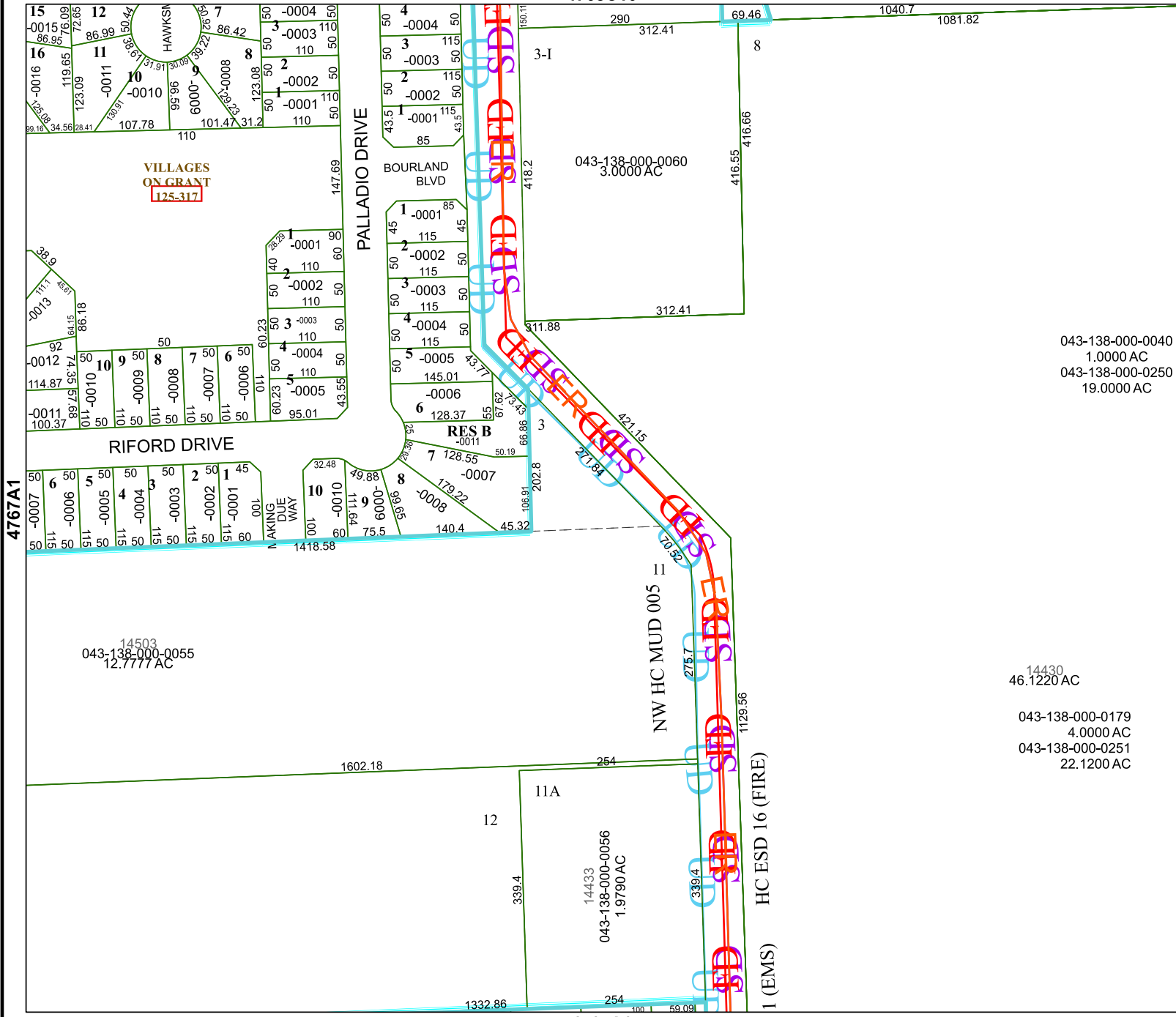


4768C10



# Harris Central Appraisal District

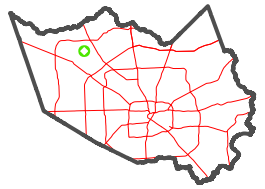


0 45 90 180 Feet

PUBLICATION DATE: 12/30/2023

Geospatial or map data maintained by the Harris Central Appraisal District is for informational purposes and may not have been prepared for or be suitable for legal, engineering, or surveying purposes. It does not represent an on-the-ground survey and only represents the approximate location of property boundaries.

### MAP LOCATION



# FACET 4767A2

12	9	10	11	12
4	1	2	3	4
8	5	6	7	8

043-138-000-0040  
1.0000 AC  
043-138-000-0250  
19.0000 AC

14430  
46.1220 AC

043-138-000-0179  
4.0000 AC  
043-138-000-0251  
22.1200 AC

4767A6

4767A1

4767A3