

Harris Central Appraisal District

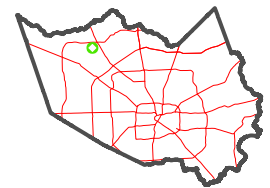


0 45 90 180 Feet

PUBLICATION DATE: 1/5/2023

Geospatial or map data maintained by the Harris Central Appraisal District is for informational purposes and may not have been prepared for or be suitable for legal, engineering, or surveying purposes. It does not represent an on-the-ground survey and only represents the approximate location of property boundaries.

MAP LOCATION

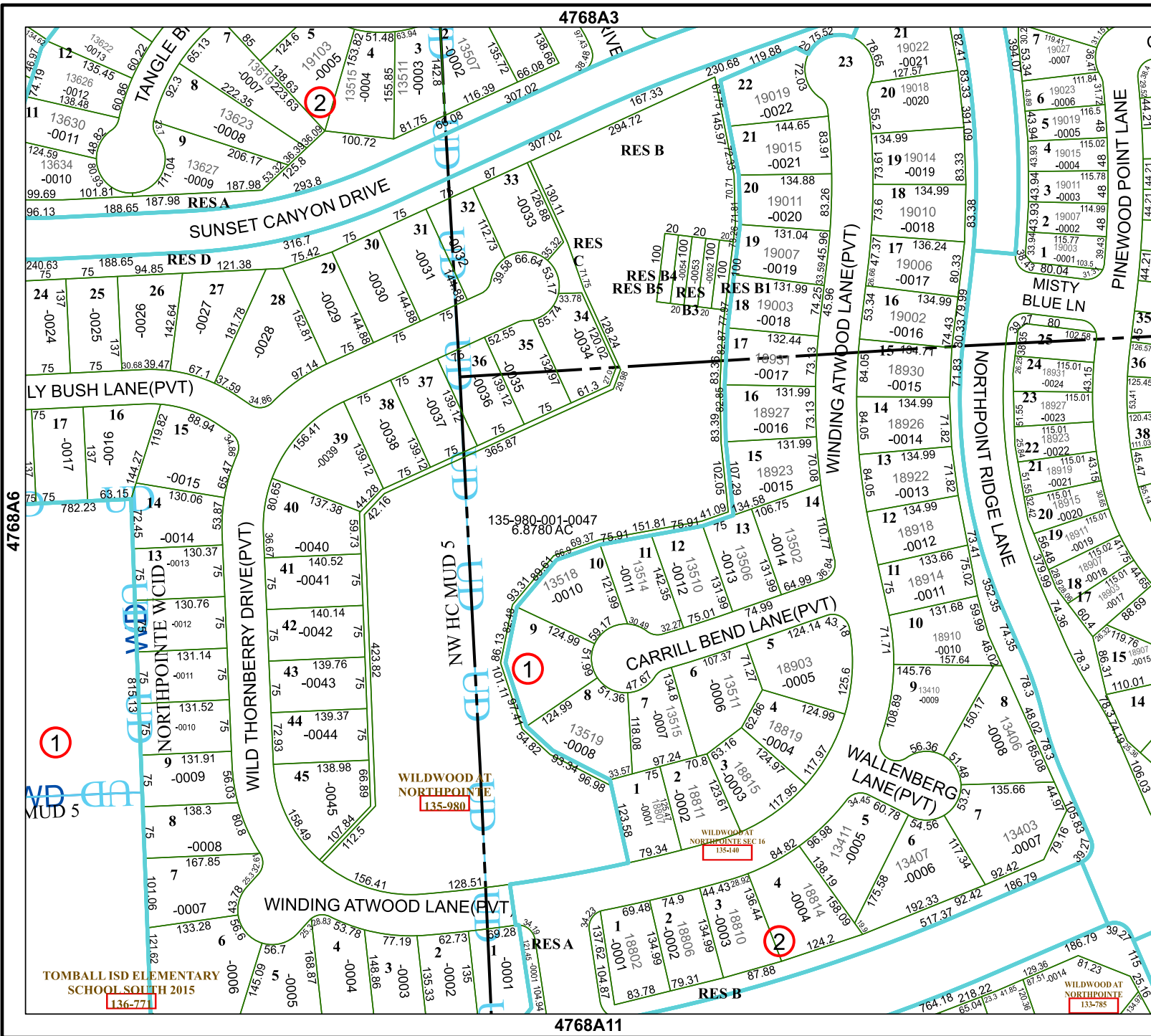


FACET 4768A7

| | | | | |
|---|----|----|----|---|
| 1 | 2 | 3 | 4 | 1 |
| 5 | 6 | 7 | 8 | 5 |
| 9 | 10 | 11 | 12 | 9 |

4768A3

4768A11



TOMBALL ISD ELEMENTARY SCHOOL SOUTH 2015
136-771

WILDWOOD AT NORTHPOINTE
135-980

WILDWOOD AT NORTHPOINTE SEC 16
135-140

WILDWOOD AT NORTHPOINTE
135-785