

Harris Central Appraisal District

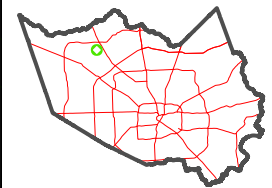


0 45 90 180 Feet

PUBLICATION DATE:
1/5/2023

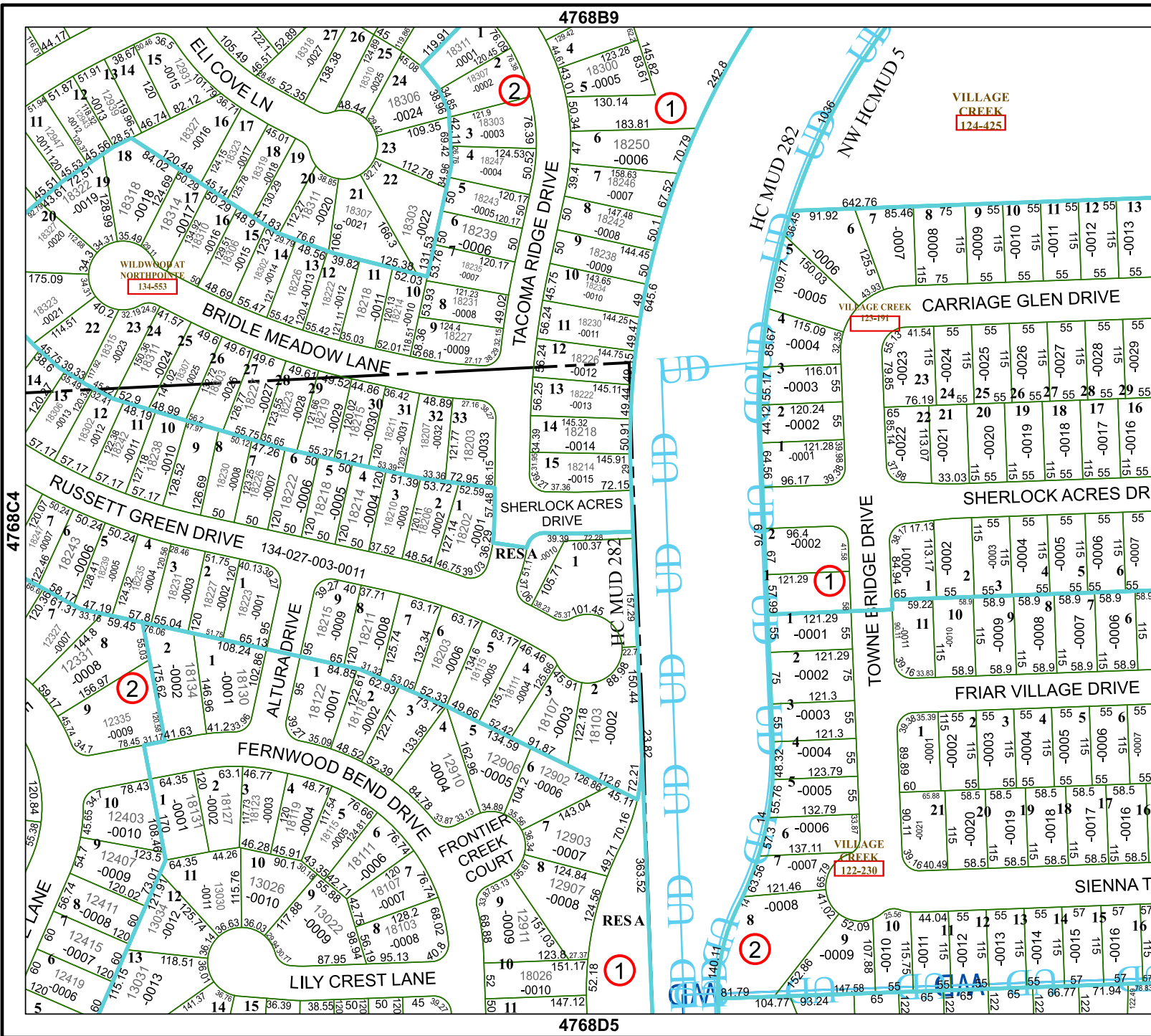
Geospatial or map data maintained by the Harris Central Appraisal District is for informational purposes and may not have been prepared for or be suitable for legal, engineering, or surveying purposes. It does not represent an on-the-ground survey and only represents the approximate location of property boundaries.

MAP LOCATION



FACET 4768D1

11	12	9	10	11
3	4	1	2	3
7	8	5	6	7



VILLAGE CREEK
124-425

WILDWOOD AT NORTHPOINT
134-553

VILLAGE CREEK
123-191

VILLAGE CREEK
122-230

4768B9

4768D5

4768C4

4768D2

