

4770C9

1

PRIVATE ROAD

SE REGIONAL MNGMNT DIST

HC MUD 416

RES A

Harris Central Appraisal District



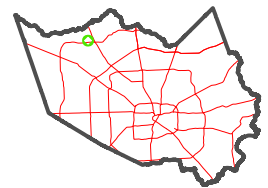
0 45 90 180 Feet

PUBLICATION DATE: 5/11/2023

Geospatial or map data maintained by the Harris Central Appraisal District is for informational purposes and may not have been prepared for or be suitable for legal, engineering, or surveying purposes. It does not represent an on-the-ground survey and only represents the approximate location of property boundaries.

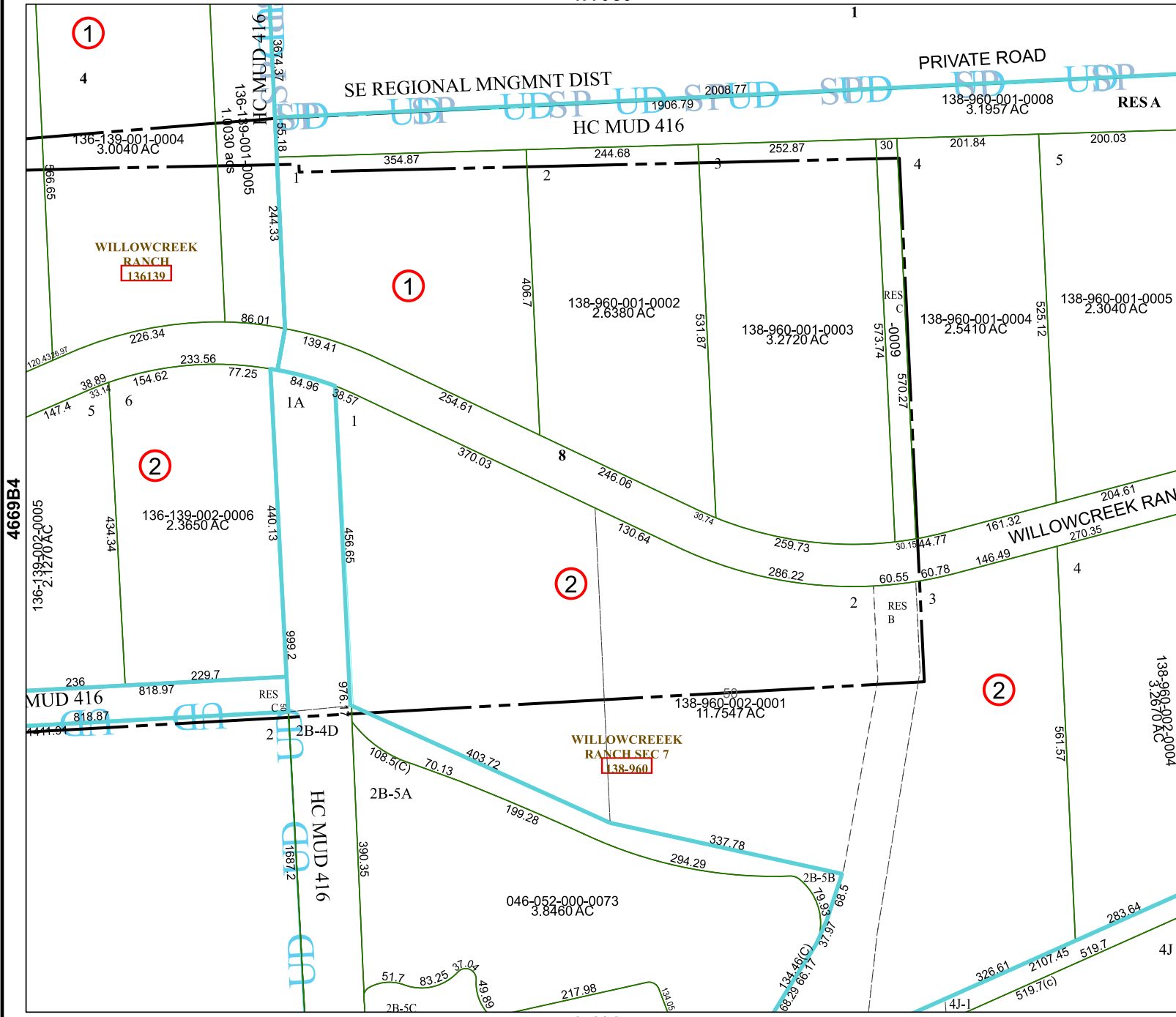


MAP LOCATION



FACET 4769A1

11	12	9	10	11
3	4	1	2	3
7	8	5	6	7



4769A5

4669B4

4769A2