

4769B4

# Harris Central Appraisal District



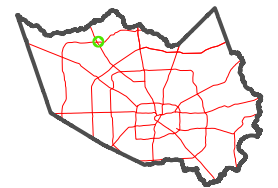
0 45 90 180 Feet

PUBLICATION DATE:  
4/8/2024

Geospatial or map data maintained by the Harris Central Appraisal District is for informational purposes and may not have been prepared for or be suitable for legal, engineering, or surveying purposes. It does not represent an on-the-ground survey and only represents the approximate location of property boundaries.



### MAP LOCATION



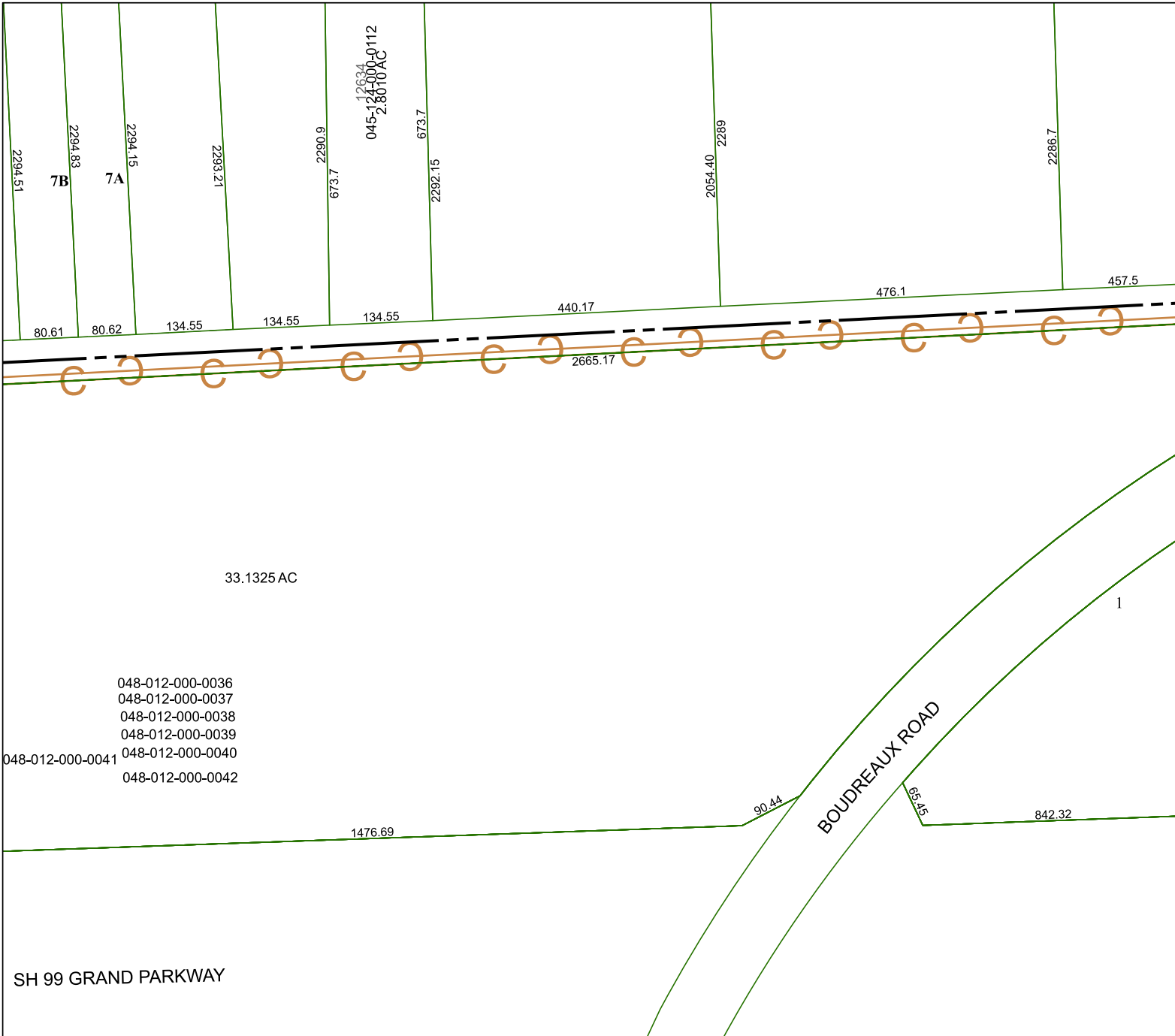
## FACET 4769B8

2	3	4	1	2
6	7	8	5	6
10	11	12	9	10

4769B12

4769B7

4869A5



SH 99 GRAND PARKWAY

BOUDREAU ROAD