

4769C3

Harris Central Appraisal District



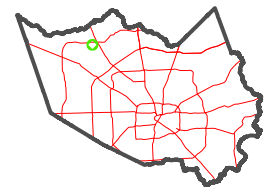
0 45 90 180 Feet

PUBLICATION DATE: 12/30/2023

Geospatial or map data maintained by the Harris Central Appraisal District is for informational purposes and may not have been prepared for or be suitable for legal, engineering, or surveying purposes. It does not represent an on-the-ground survey and only represents the approximate location of property boundaries.



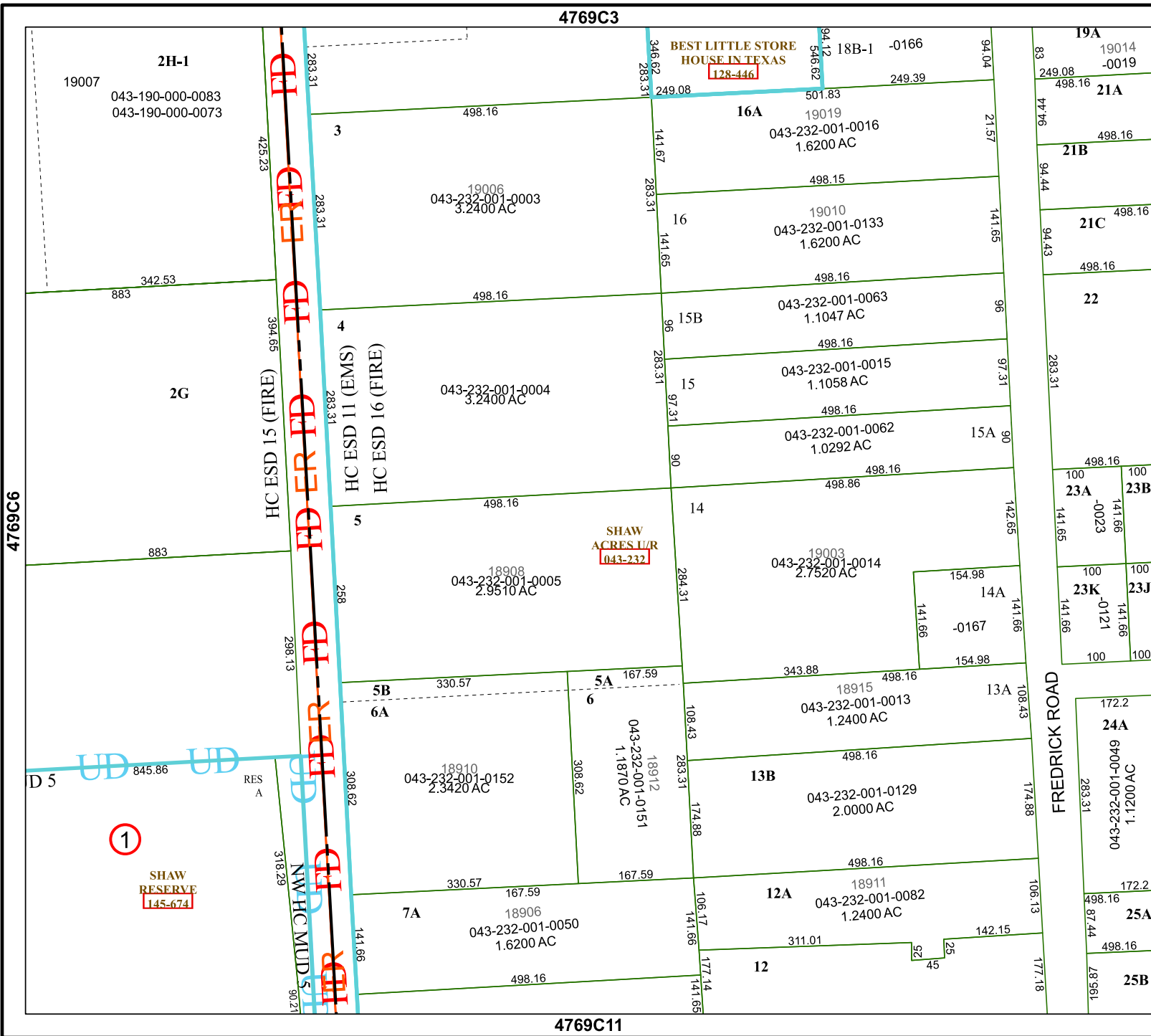
MAP LOCATION



FACET 4769C7

1	2	3	4	1
5	6	7	8	5
9	10	11	12	9

4769C11



1

SHAW RESERVE 1345-674

4769C6

4769C8

FREDRICK ROAD

HC ESD 15 (FIRE)

HC ESD 11 (EMS)

HC ESD 16 (FIRE)

NW HC MUD 5

RES A

D 5

UD UD

883 342.53

2G

2H-1

19007 043-190-000-0083 043-190-000-0073

BEST LITTLE STORE HOUSE IN TEXAS 128-446

SHAW ACRES L/R 043-232