

# Harris Central Appraisal District

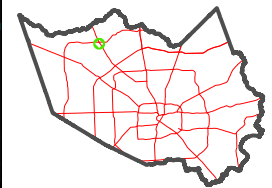


0 45 90 180 Feet

PUBLICATION DATE: 12/30/2023

Geospatial or map data maintained by the Harris Central Appraisal District is for informational purposes and may not have been prepared for or be suitable for legal, engineering, or surveying purposes. It does not represent an on-the-ground survey and only represents the approximate location of property boundaries.

MAP LOCATION



## FACET 4769D3

9	10	11	12	9
1	2	3	4	1
5	6	7	8	5

4769B11

4769D7

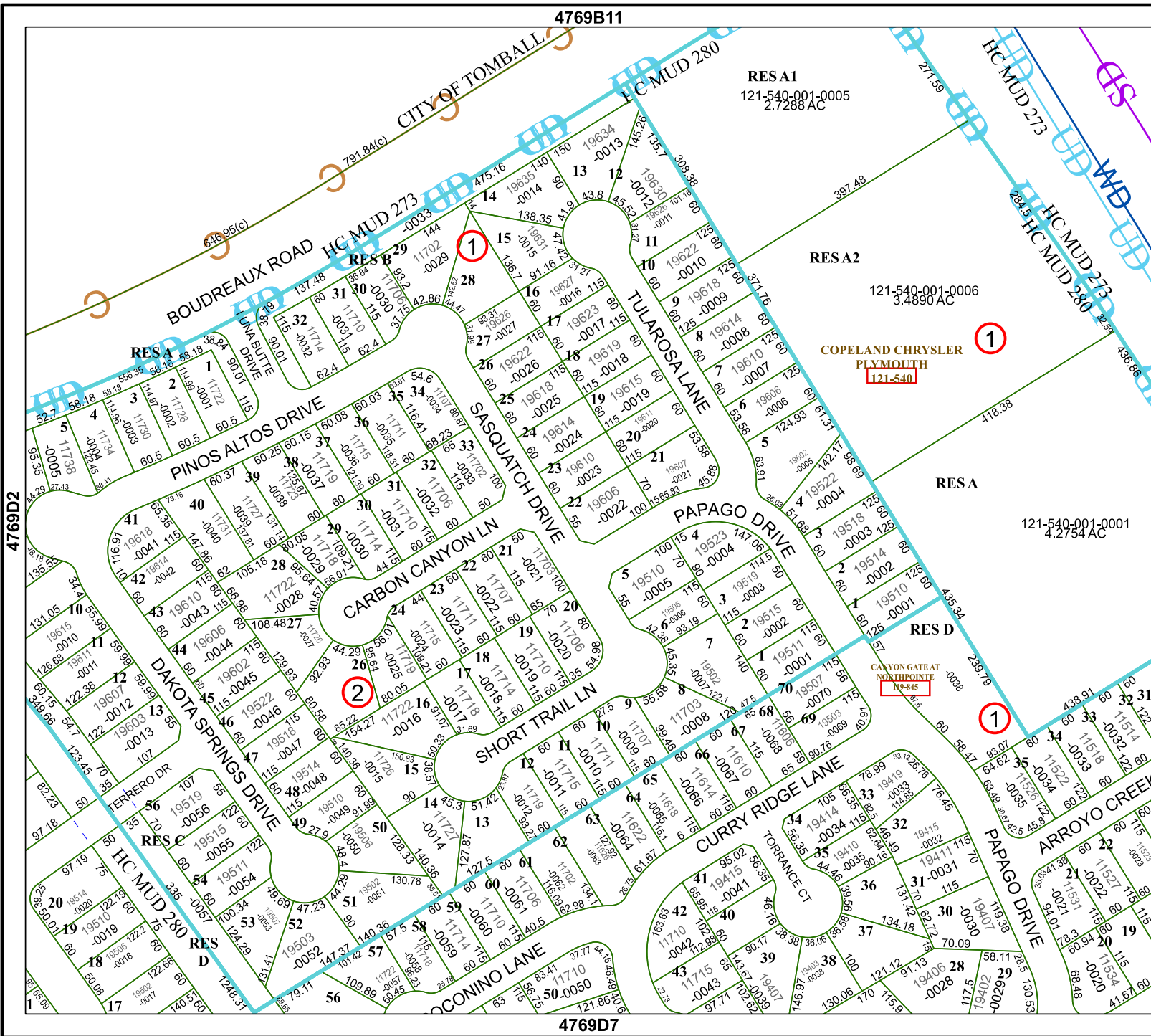
RESA1  
121-540-001-0005  
2.7288 AC

RESA2  
121-540-001-0006  
3.4890 AC

COPELAND CHRYSLER  
PLYMOUTH  
121-540

RESA  
121-540-001-0001  
4.2754 AC

RES D  
CANYON GATE AT  
NORTHPOINTE  
119-845



4769D2

4769D4

