

4770D1

Harris Central Appraisal District



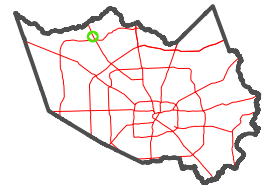
0 45 90 180 Feet

PUBLICATION DATE:
1/23/2025

Geospatial or map data maintained by the Harris Central Appraisal District is for informational purposes and may not have been prepared for or be suitable for legal, engineering, or surveying purposes. It does not represent an on-the-ground survey and only represents the approximate location of property boundaries.



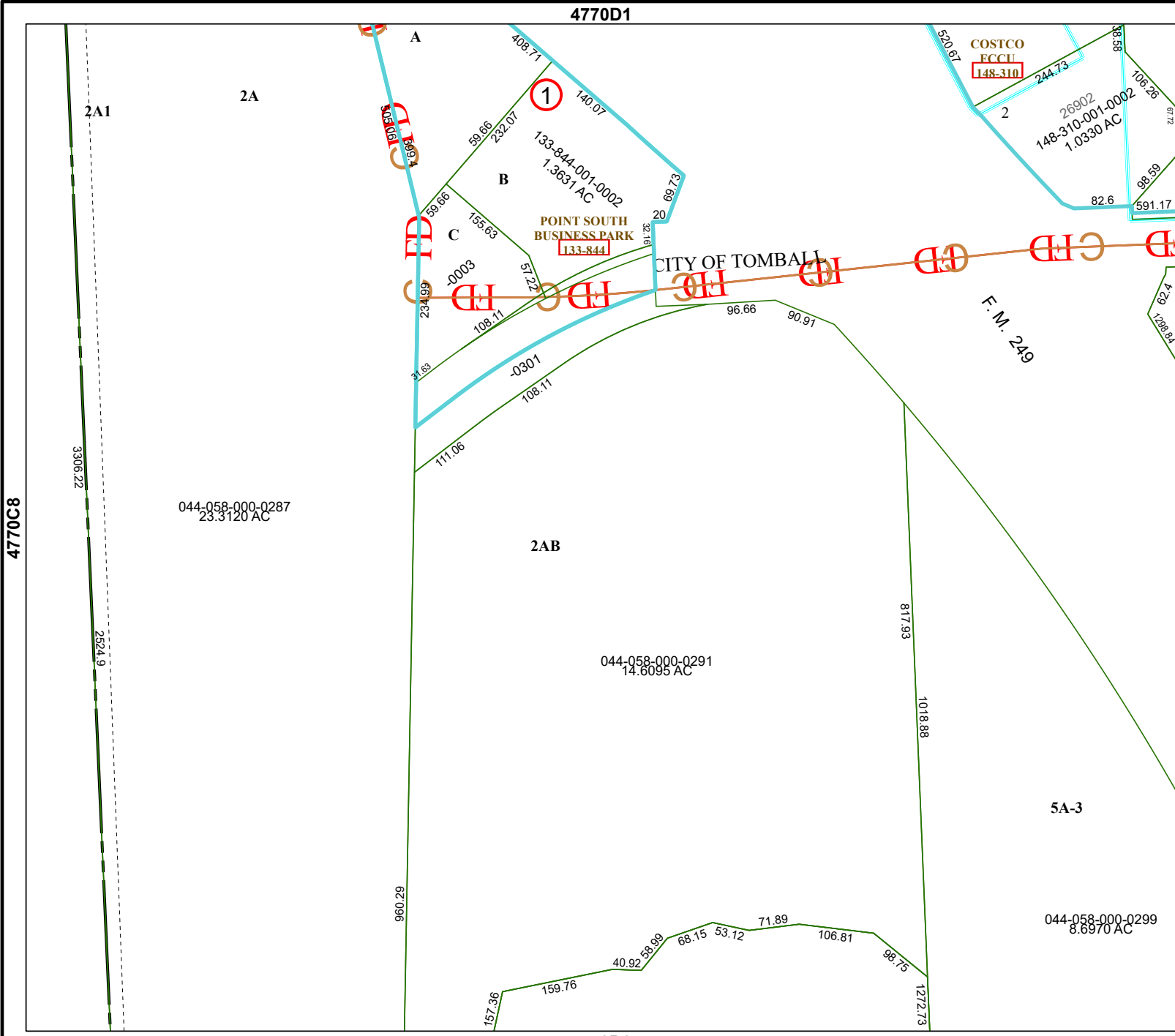
MAP LOCATION



FACET 4770D5

3	4	1	2	3
7	8	5	6	7
11	12	9	10	11

4770D9



4770D6

5A-3

F.M. 249

CITY OF TOMBALL

COSTCO
FCCL
148-310

1

4770C8

2A1

2A

2AB

044-058-000-0299
8.6970 AC

044-058-000-0291
14.6095 AC

044-058-000-0287
23.3120 AC