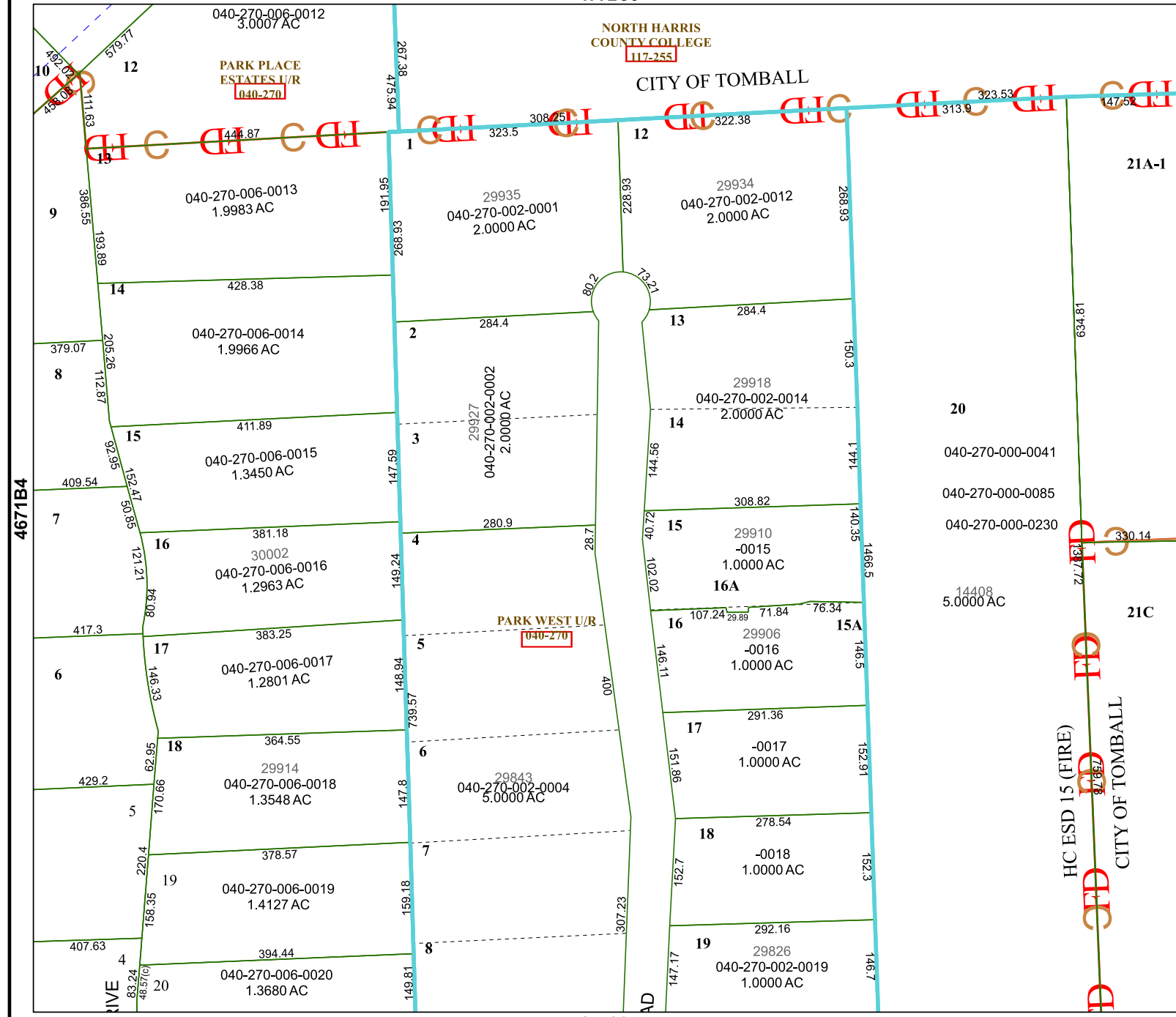


4772C9

NORTH HARRIS COUNTY COLLEGE  
117-255

CITY OF TOMBALL



4771A5

# Harris Central Appraisal District



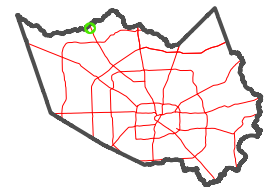
0 45 90 180 Feet

PUBLICATION DATE:  
1/17/2023

Geospatial or map data maintained by the Harris Central Appraisal District is for informational purposes and may not have been prepared for or be suitable for legal, engineering, or surveying purposes. It does not represent an on-the-ground survey and only represents the approximate location of property boundaries.



MAP LOCATION



## FACET 4771A1

11	12	9	10	11
3	4	1	2	3
7	8	5	6	7

HC ESD 15 (FIRE)  
CITY OF TOMBALL

21A-1

21C

4771A2