

# Harris Central Appraisal District



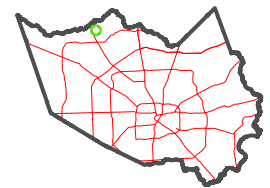
0 45 90 180 Feet

PUBLICATION DATE:  
12/30/2023

Geospatial or map data maintained by the Harris Central Appraisal District is for informational purposes and may not have been prepared for or be suitable for legal, engineering, or surveying purposes. It does not represent an on-the-ground survey and only represents the approximate location of property boundaries.



MAP LOCATION

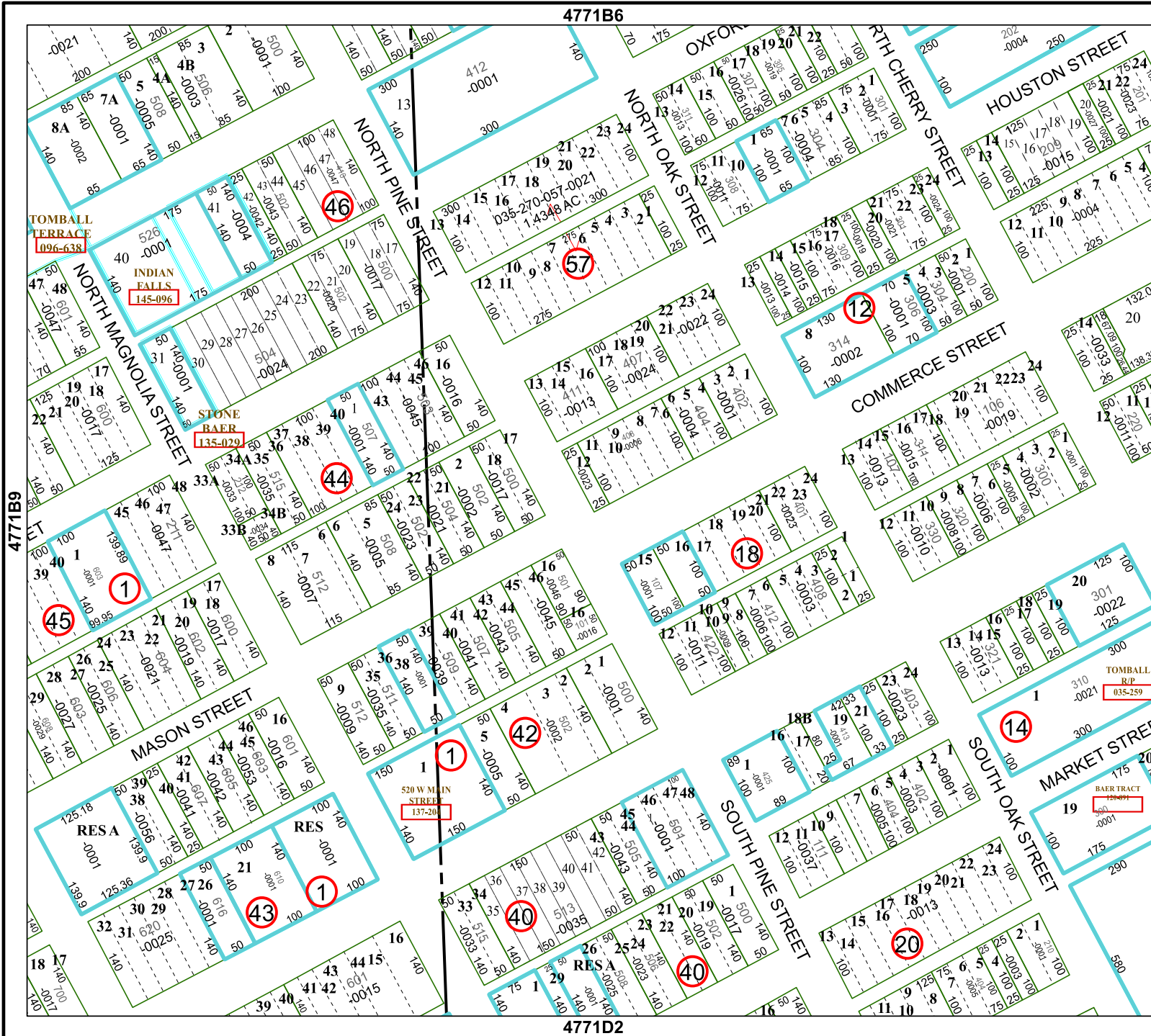


## FACET 4771B10

8	5	6	7	8
12	9	10	11	12
4	1	2	3	4

4771B6

4771D2



TOMBALL TERRACE  
1096-638

INDIAN FALLS  
145-096

STONE BAER  
135-029

TOMBALL RP  
035-259

BAER TRACT  
50-001

520 W MAIN STREET  
137-20

4771B9

4771B11