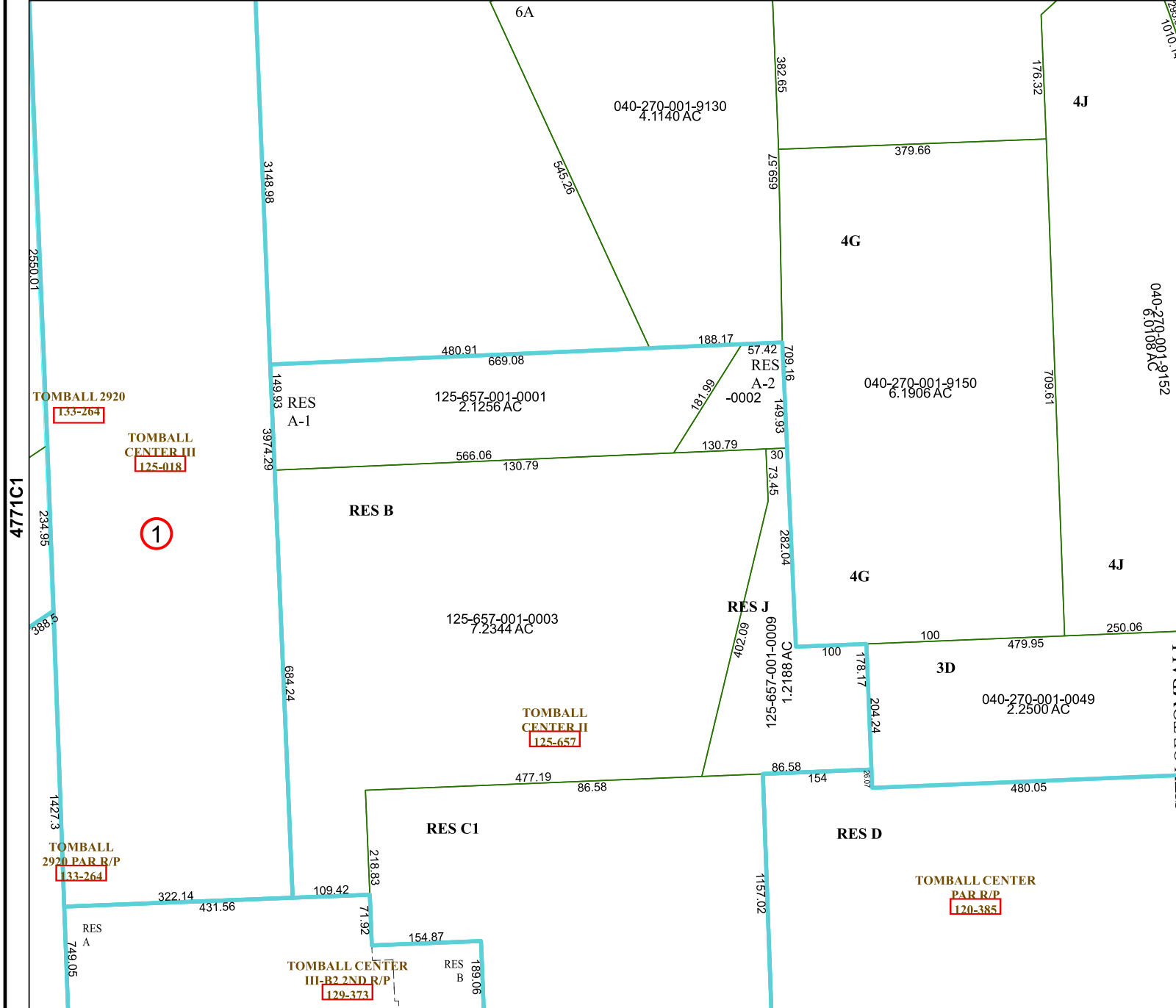


4771A10



4771C1

4771C6

# Harris Central Appraisal District



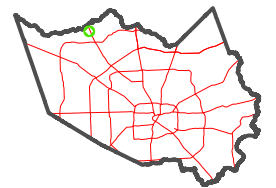
0 45 90 180 Feet

PUBLICATION DATE: 12/30/2023

Geospatial or map data maintained by the Harris Central Appraisal District is for informational purposes and may not have been prepared for or be suitable for legal, engineering, or surveying purposes. It does not represent an on-the-ground survey and only represents the approximate location of property boundaries.



MAP LOCATION



## FACET 4771C2

12	9	10	11	12
4	1	2	3	4
8	5	6	7	8

285.38  
1010.14

040-270-001-9152  
6.0108 AC

4771C3

CITY OF TOMBALL

TOMBALL 2920  
133-264

TOMBALL CENTER III  
125-018

1

TOMBALL 2920 PAR R/P  
33-264

TOMBALL CENTER II  
125-657

TOMBALL CENTER PAR R/P  
120-385

TOMBALL CENTER III-B2 2ND R/P  
129-373