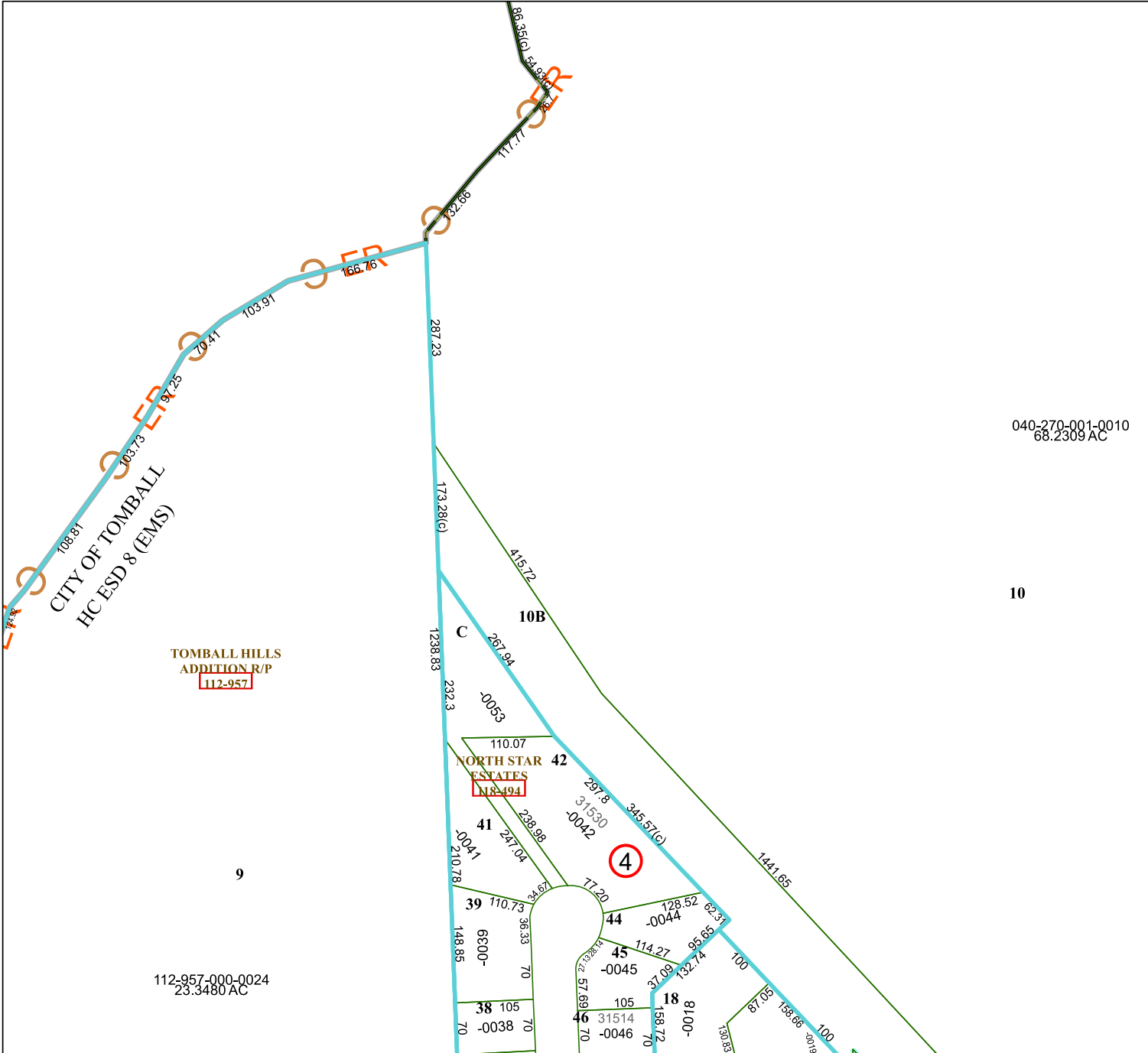


4772A6

4772A9



4772C2

Harris Central Appraisal District

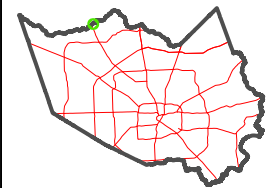


0 45 90 180 Feet

PUBLICATION DATE: 1/5/2023

Geospatial or map data maintained by the Harris Central Appraisal District is for informational purposes and may not have been prepared for or be suitable for legal, engineering, or surveying purposes. It does not represent an on-the-ground survey and only represents the approximate location of property boundaries.

MAP LOCATION



FACET 4772A10

	5	6	7	8
	9	10	11	12
4	1	2	3	4

040-270-001-0010
68.2309 AC

10

TOMBALL HILLS
ADDITION R/P
112-957

112-957-000-0024
23.3480 AC

NORTH STAR 42
ESTATES
112-494

4