

Harris Central Appraisal District



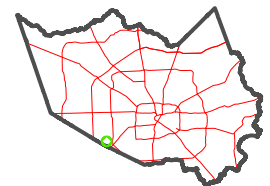
0 45 90 180 Feet

PUBLICATION DATE: 1/9/2025

Geospatial or map data maintained by the Harris Central Appraisal District is for informational purposes and may not have been prepared for or be suitable for legal, engineering, or surveying purposes. It does not represent an on-the-ground survey and only represents the approximate location of property boundaries.



MAP LOCATION



FACET 4853B7

1	2	3	4	1
5	6	7	8	5
9	10	11	12	9

4853B3

RES A1

119-358-001-0002
6.1712 AC

1

BISSONNET KIRKWOOD NORTHWEST
119-358

RES A2

119-358-001-0003
1.8140 AC

RES A3

-0005

1F

KIRKWOOD DRIVE

119-499-001-0001
1.4395 AC

119-499

1

1

RES A

RES A

-0001

RES A2

119-358-001-0003
1.8140 AC

RES A3

-0005

BISSONNET

ZL

ZL

ZL

ZL

ZL

ZL

ZL

ZL

6F-2

-0088

1A

1B

114-559-000-0006
1.0242 AC

RES B2

RES B

RES B3

RES B1

RES B4

-0026

RES B5

114-559-000-0001
6.2152 AC

RES B

114-755-000-0025
1.0101 AC

RES B

RES B5

-0002

1.0000 AC

RES B

RES B

RES B

RES B

RES B

RES B

RES B

RES B

RES B

RES B

RES B

RES B

RES B

RES B

RES B

RES B

RES B

RES B

RES B

RES B

RES B

RES B

RES B

RES B

RES B

RES B

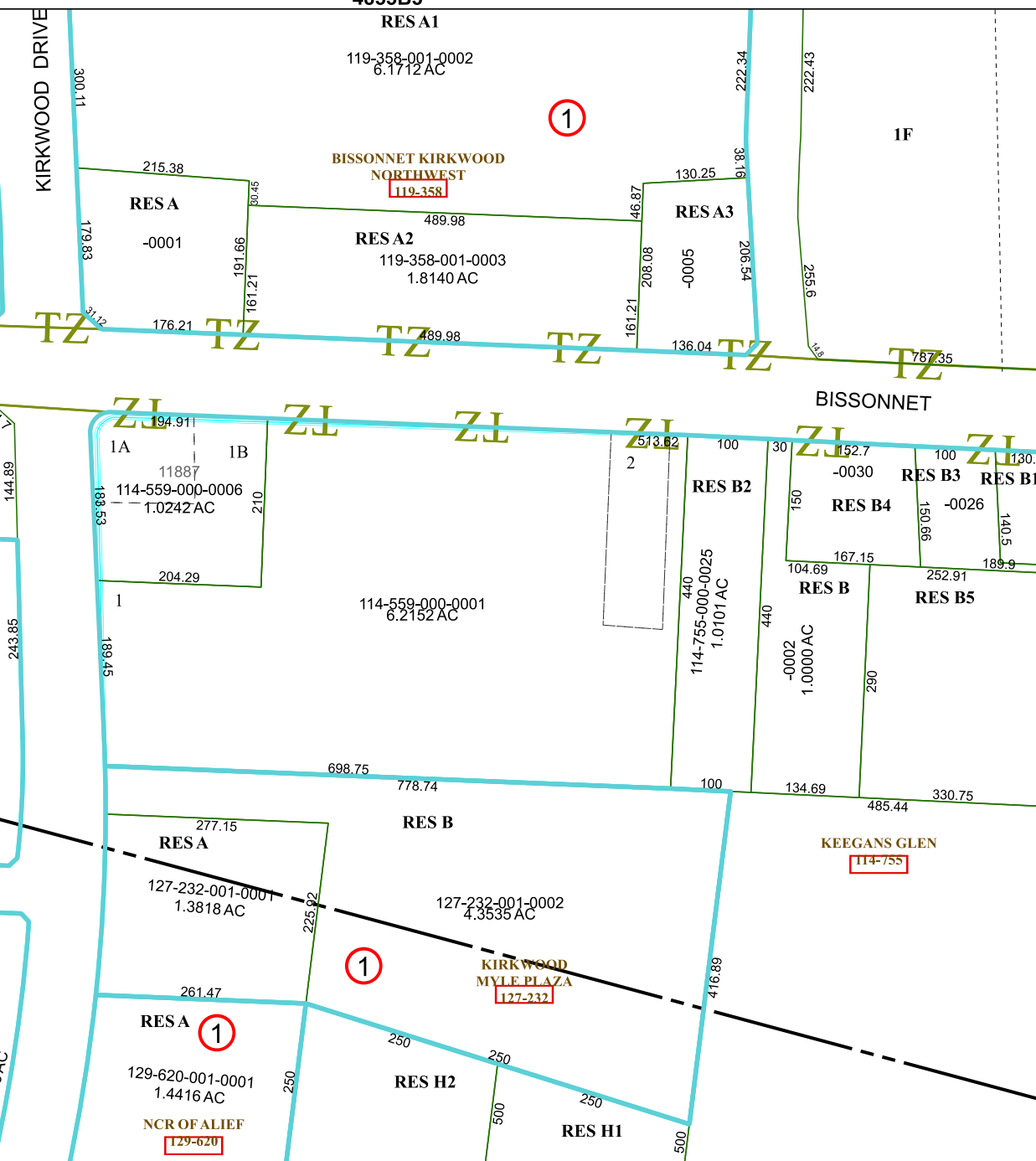
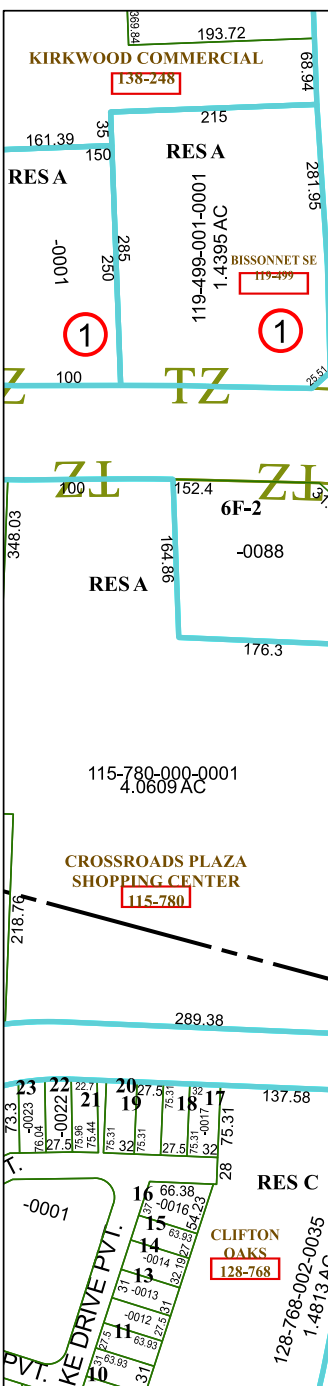
RES B

RES B

4853B11

4853B6

4853B8



Harris Central Appraisal District logo and contact information.

Scale: 0 45 90 180 Feet

PUBLICATION DATE: 1/9/2025

Geospatial or map data maintained by the Harris Central Appraisal District is for informational purposes and may not have been prepared for or be suitable for legal, engineering, or surveying purposes. It does not represent an on-the-ground survey and only represents the approximate location of property boundaries.

MAP LOCATION

Map of Harris County showing the location of the current map area.

FACET 4853B7

1	2	3	4	1
5	6	7	8	5
9	10	11	12	9