

Harris Central Appraisal District

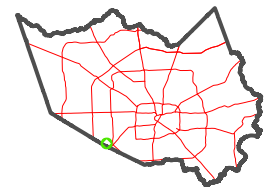


0 45 90 180 Feet

PUBLICATION DATE:
2/28/2024

Geospatial or map data maintained by the Harris Central Appraisal District is for informational purposes and may not have been prepared for or be suitable for legal, engineering, or surveying purposes. It does not represent an on-the-ground survey and only represents the approximate location of property boundaries.

MAP LOCATION

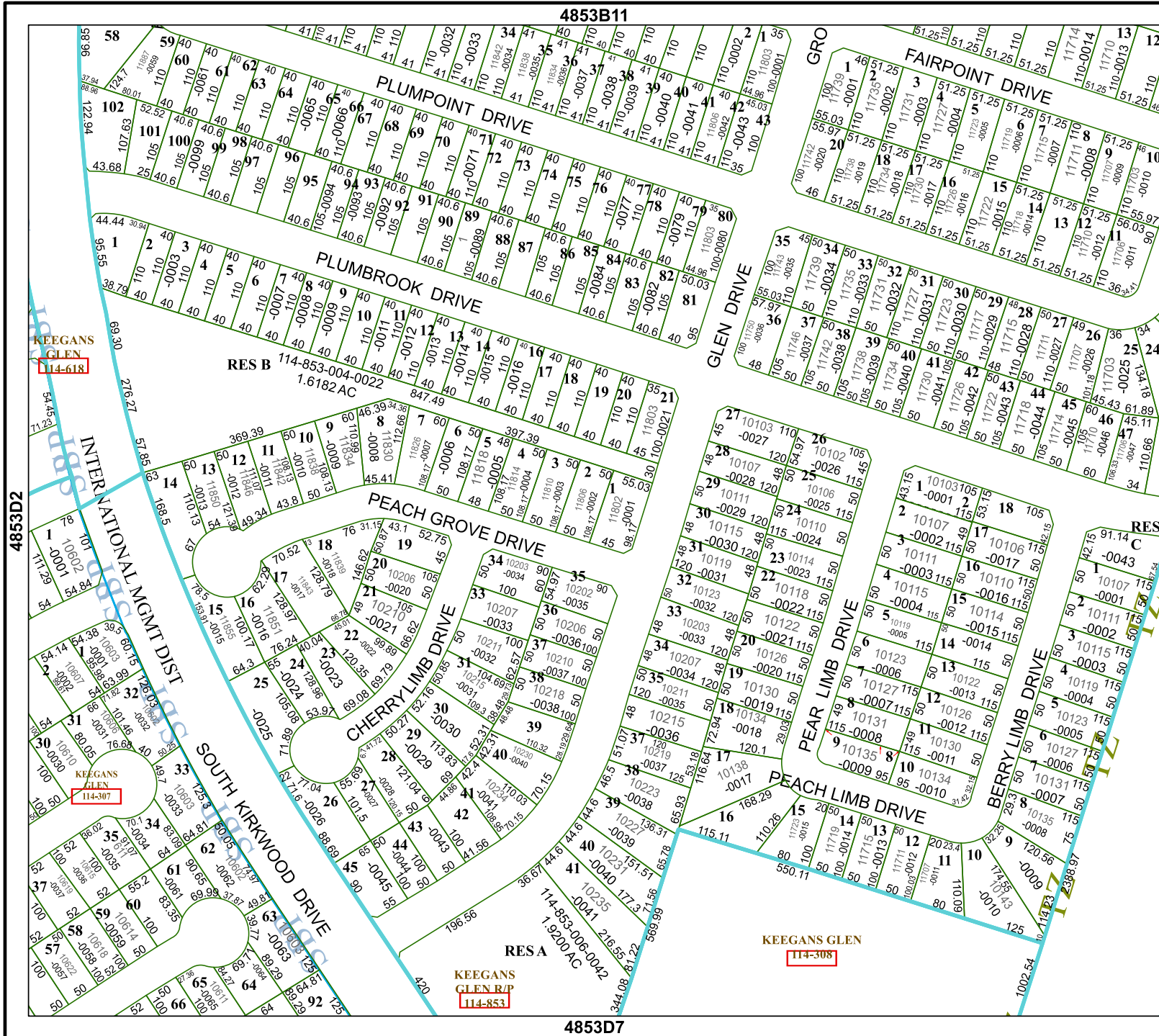


FACET 4853D3

9	10	11	12	9
1	2	3	4	1
5	6	7	8	5

4853B11

4853D7



KEEGANS GLEN
114-618

KEEGANS GLEN
114-307

KEEGANS GLEN R/P
114-853

KEEGANS GLEN
114-308

RES B 114-853-004-0022
1.6182 AC

RESA
114-853-006-042
1.9200 AC

4853D4

4853D2