

4854C1

REDEEMED CHRISTIAN CHURCH
127-998

Redeemed Christian Church of God
Restoration
137-701

BEECHNUT WEST
115-544

Harris Central Appraisal District

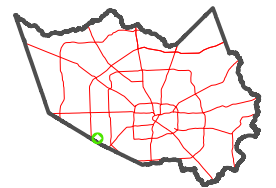


0 45 90 180 Feet

PUBLICATION DATE:
1/5/2023

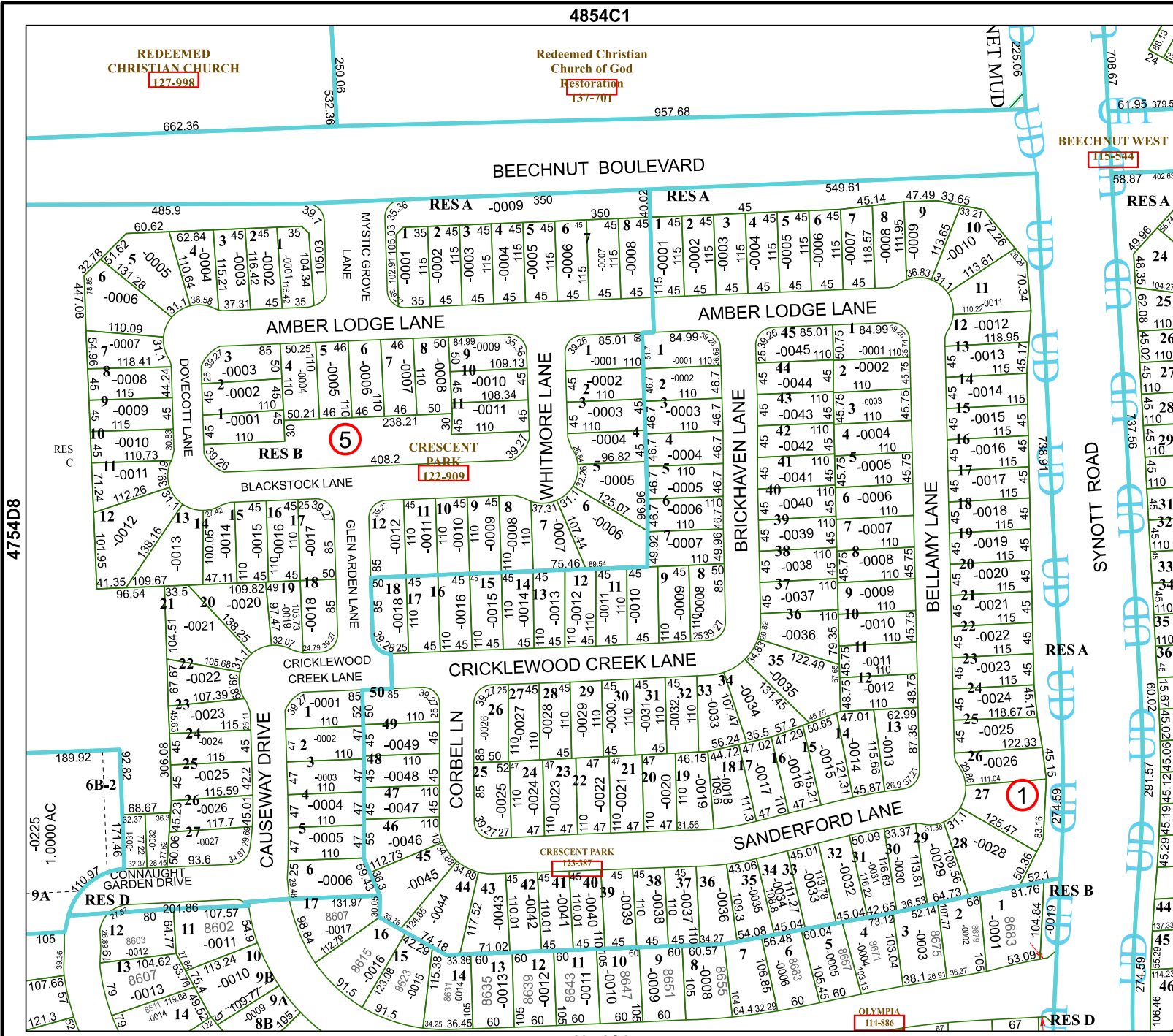
Geospatial or map data maintained by the Harris Central Appraisal District is for informational purposes and may not be suitable for legal, engineering, or surveying purposes. It does not represent an on-the-ground survey and only represents the approximate location of property boundaries.

MAP LOCATION



FACET 4854C5

3	4	1	2	3
7	8	5	6	7
11	12	9	10	11



4854C9

OLYMPIA
114-886

4754D8

4854C6

