

Harris Central Appraisal District

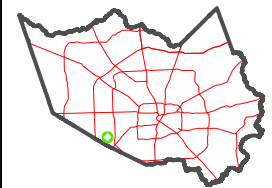


0 45 90 180 Feet

PUBLICATION DATE: 1/5/2023

Geospatial or map data maintained by the Harris Central Appraisal District is for informational purposes and may not have been prepared for or be suitable for legal, engineering, or surveying purposes. It does not represent an on-the-ground survey and only represents the approximate location of property boundaries.

MAP LOCATION

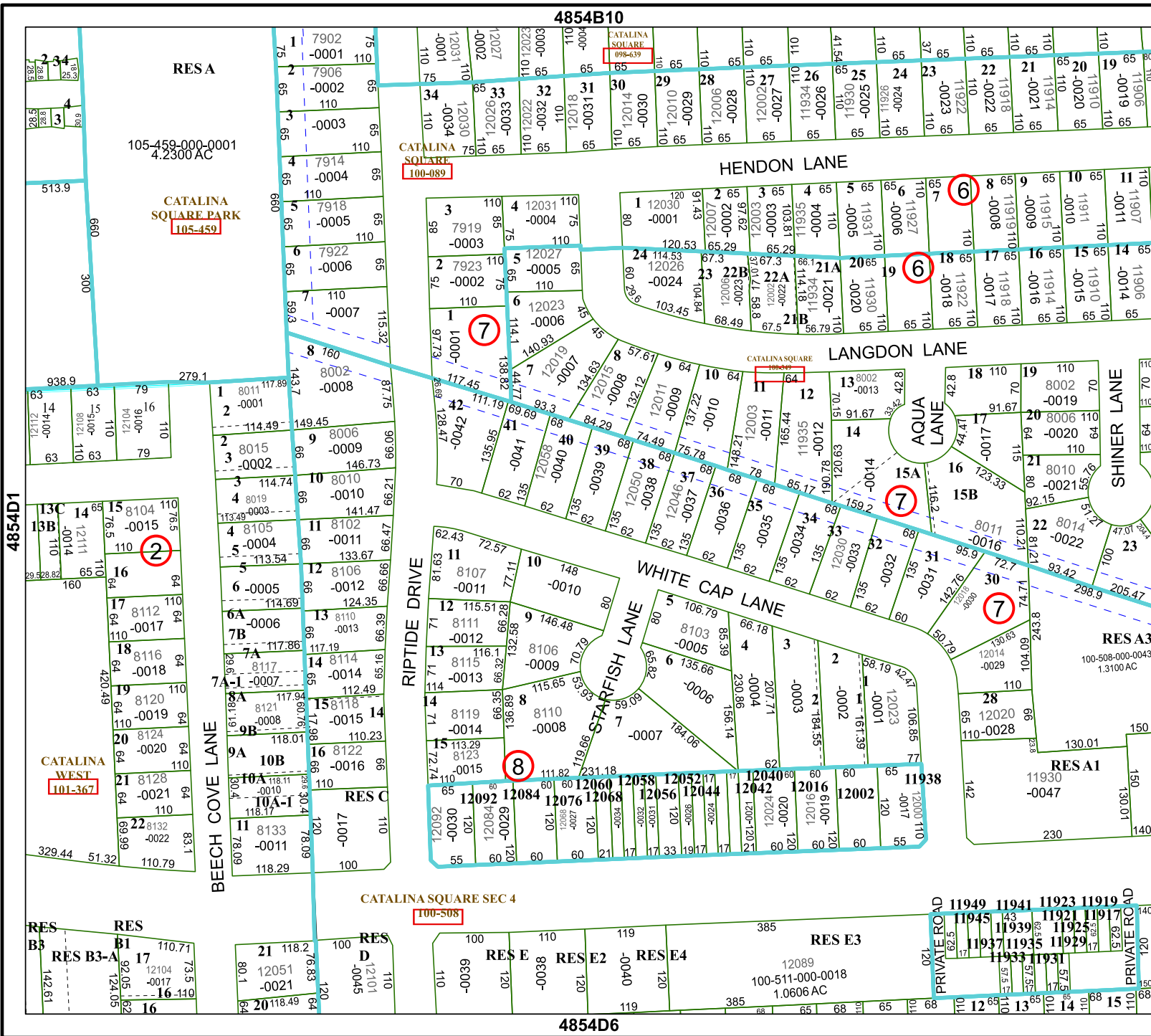


FACET 4854D2

12	9	10	11	12
4	1	2	3	4
8	5	6	7	8

4854B10

4854D6



RES A

105-459-000-0001
4.2300 AC

CATALINA SQUARE PARK
105-459

4854D1

4854D3

CATALINA WEST
101-367

CATALINA SQUARE SEC 4
100-508

RES B3
RES B3-A

RES D

RES E RES E2 RES E3 RES E4

PRIVATE ROAD 11949 11941 11923 11919

11945 11939 11921 11917

11937 11935 11929

11933 11931

PRIVATE ROAD