

Harris Central Appraisal District

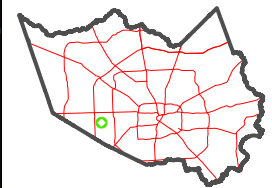


0 45 90 180 Feet

PUBLICATION DATE: 12/30/2023

Geospatial or map data maintained by the Harris Central Appraisal District is for informational purposes and may not have been prepared for or be suitable for legal, engineering, or surveying purposes. It does not represent an on-the-ground survey and only represents the approximate location of property boundaries.

MAP LOCATION



FACET 4856A5

3	4	1	2	3
7	8	5	6	7
11	12	9	10	11

4856A1

ASHFORD WEST

RES A2

RES A3

115-085-000-0004
17.1618 AC

WHITTINGTON DRIVE

RES C

RES C2

ASHFORD CROSSING
115-085

WESTMEAD DRIVE

RES B1

RES B

REFLECTIONS SEC 2
116-904

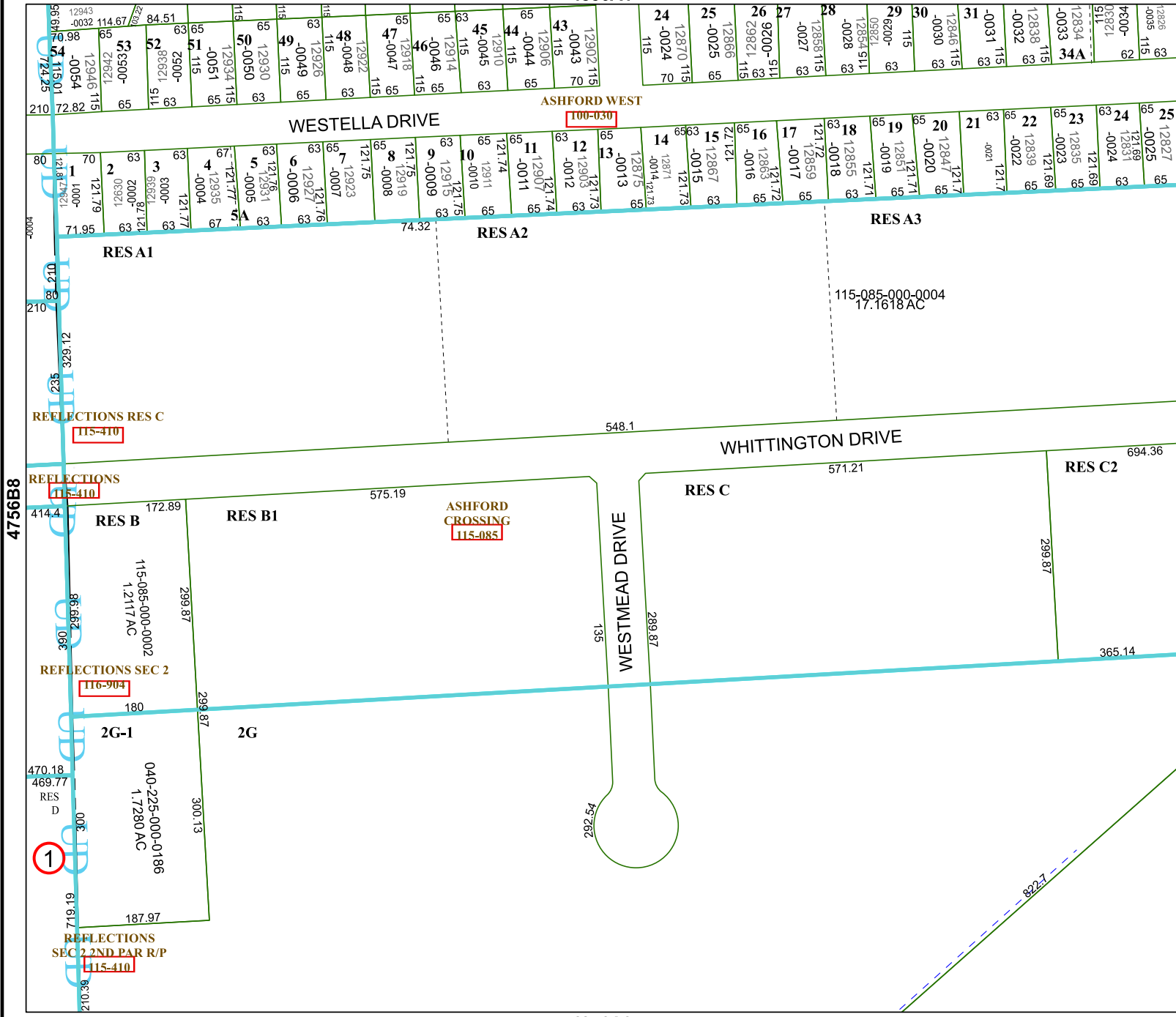
2G-1

2G

040-225-000-0186
1.7280 AC

REFLECTIONS SEC 2 2ND PAR R/P
115-410

4856A9



4756B8

4856A6

