

Harris Central Appraisal District

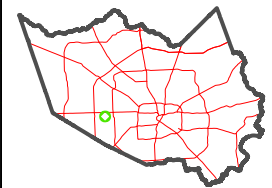


0 45 90 180 Feet

PUBLICATION DATE:
1/10/2023

Geospatial or map data maintained by the Harris Central Appraisal District is for informational purposes and may not have been prepared for or be suitable for legal, engineering, or surveying purposes. It does not represent an on-the-ground survey and only represents the approximate location of property boundaries.

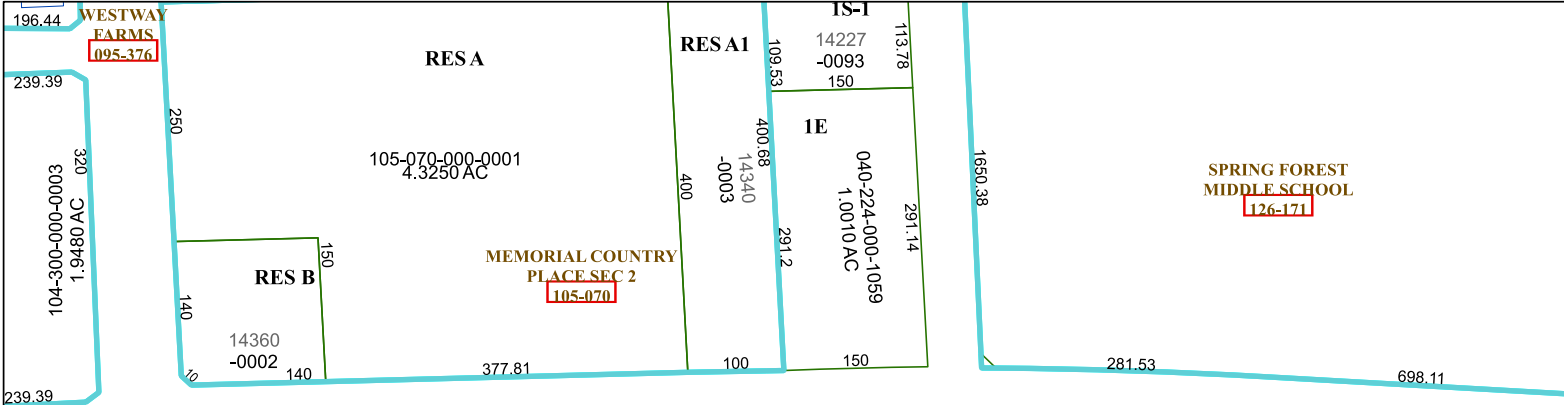
MAP LOCATION



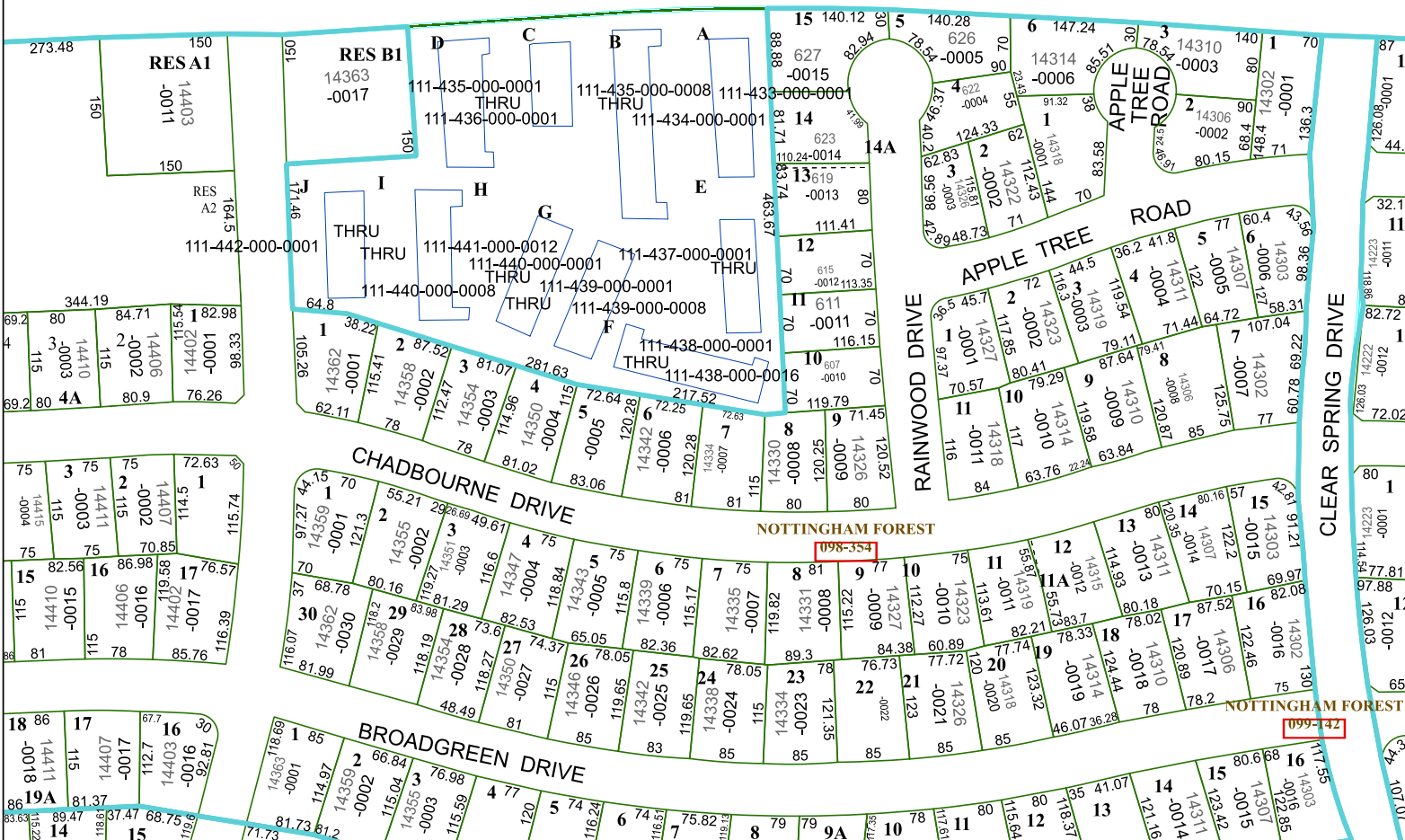
FACET 4857A8

2	3	4	5	6
6	7	8	9	10
10	11	12	9	10

4857A4



4857A12



4857A7

4857B5