

4860B11

4860B8

BRITTMOORE-TANNER BUSINESS PARK
116-469

5F
046-019-000-0031
1.7419 AC

BRITTMOORE INDUSTRIAL PARK
130-264

HC ESD 9 (EMS/FIRE)

CITY OF HOUSTON

CITY OF HOUSTON

4860D4

Harris Central Appraisal District

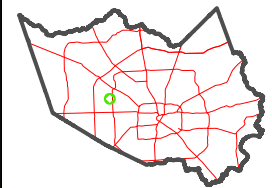


0 45 90 180 Feet

PUBLICATION DATE:
2/13/2023

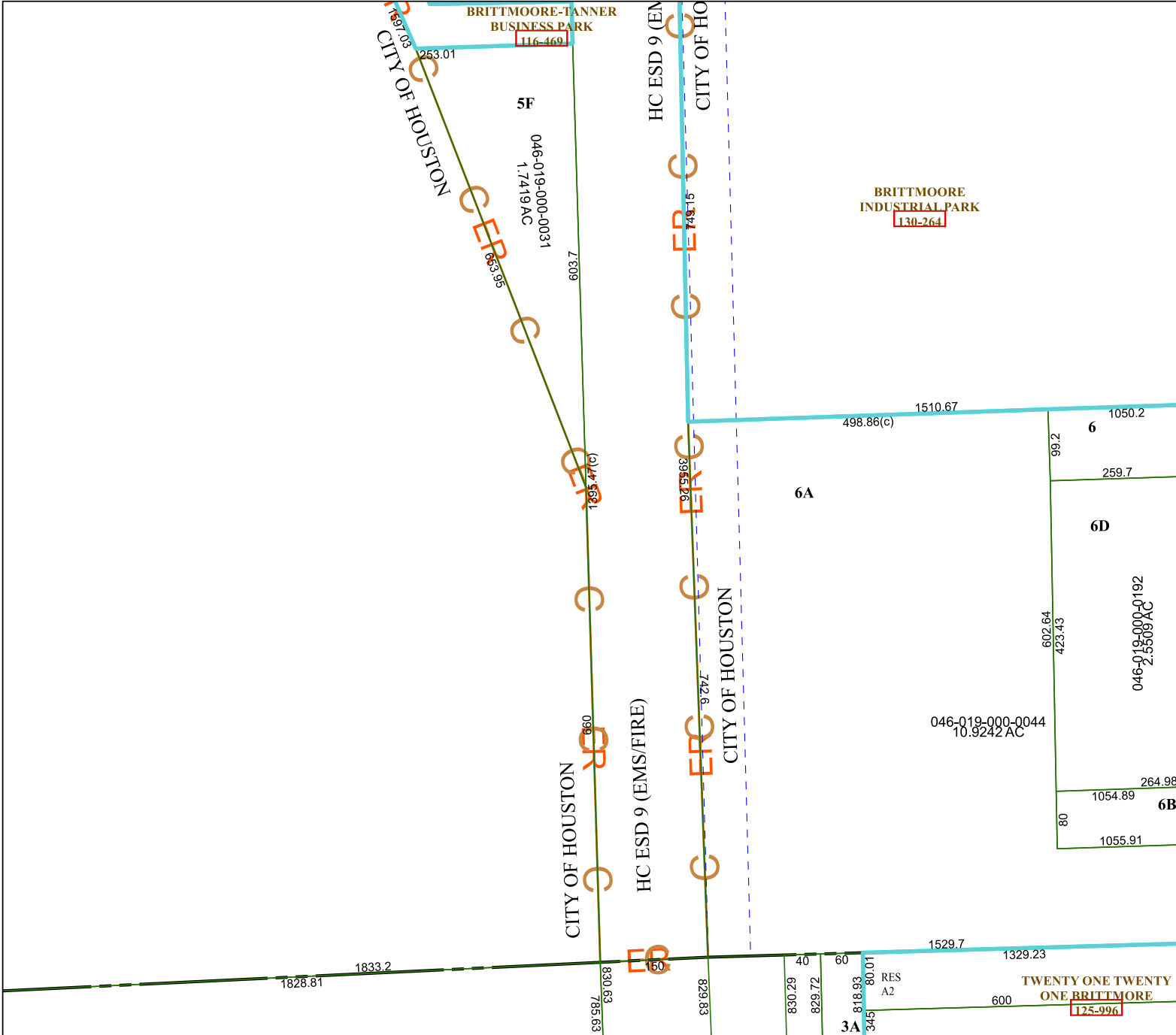
Geospatial or map data maintained by the Harris Central Appraisal District is for informational purposes and may not have been prepared for or be suitable for legal, engineering, or surveying purposes. It does not represent an on-the-ground survey and only represents the approximate location of property boundaries.

MAP LOCATION



FACET 4860B12

6	7	8	5	6
10	11	12	9	10
2	3	4	1	2



046-019-000-0044
10.9242 AC

046-019-000-0192
2.5509 AC

TWENTY ONE TWENTY ONE BRITTMORE
125-996