

Harris Central Appraisal District

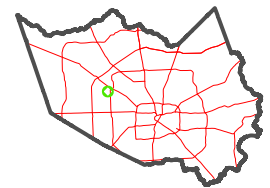


0 45 90 180 Feet

PUBLICATION DATE: 12/30/2023

Geospatial or map data maintained by the Harris Central Appraisal District is for informational purposes and may not have been prepared for or be suitable for legal, engineering, or surveying purposes. It does not represent an on-the-ground survey and only represents the approximate location of property boundaries.

MAP LOCATION



FACET 4861B8

2	3	4	1	2
6	7	8	5	6
10	11	12	9	10

4861B4

PINE CONE LANE

22	21	20	19	18	17	16	15	14	13	12	11	10	9	8
65	60	60	60	60	60	60	60	60	60	60	60	60	60	60
1143	1135	1127	1119	1112	1104	1096	1088	1080	1072	1064	1056	1048	1040	1032
-0022	-0021	-0019	-0016	-0014	-0012	-0010	-0008	-0006	-0004	-0002	-0001	-0001	-0003	-0005
125	125	125	125	125	125	125	125	125	125	125	125	125	125	125

DYSON LANE

22	21	20	19	18	17	16	15	14	13	12	11	10	9	8
65	60	60	60	60	60	60	60	60	60	60	60	60	60	60
1143	1135	1127	1119	1112	1104	1096	1088	1080	1072	1064	1056	1048	1040	1032
-0022	-0021	-0019	-0016	-0014	-0012	-0010	-0008	-0006	-0004	-0002	-0001	-0001	-0003	-0005
125	125	125	125	125	125	125	125	125	125	125	125	125	125	125

HANNING LANE

21	20	19	18	17	16	15	14	13	12	11	10	9	8
65	60	60	60	60	60	60	60	60	60	60	60	60	60
1143	1135	1127	1119	1112	1104	1096	1088	1080	1072	1064	1056	1048	1040
-0043	-0020	-0017	-0016	-0014	-0013	-0011	-0010	-0009	-0009	-0009	-0009	-0009	-0008
125	125	125	125	125	125	125	125	125	125	125	125	125	125

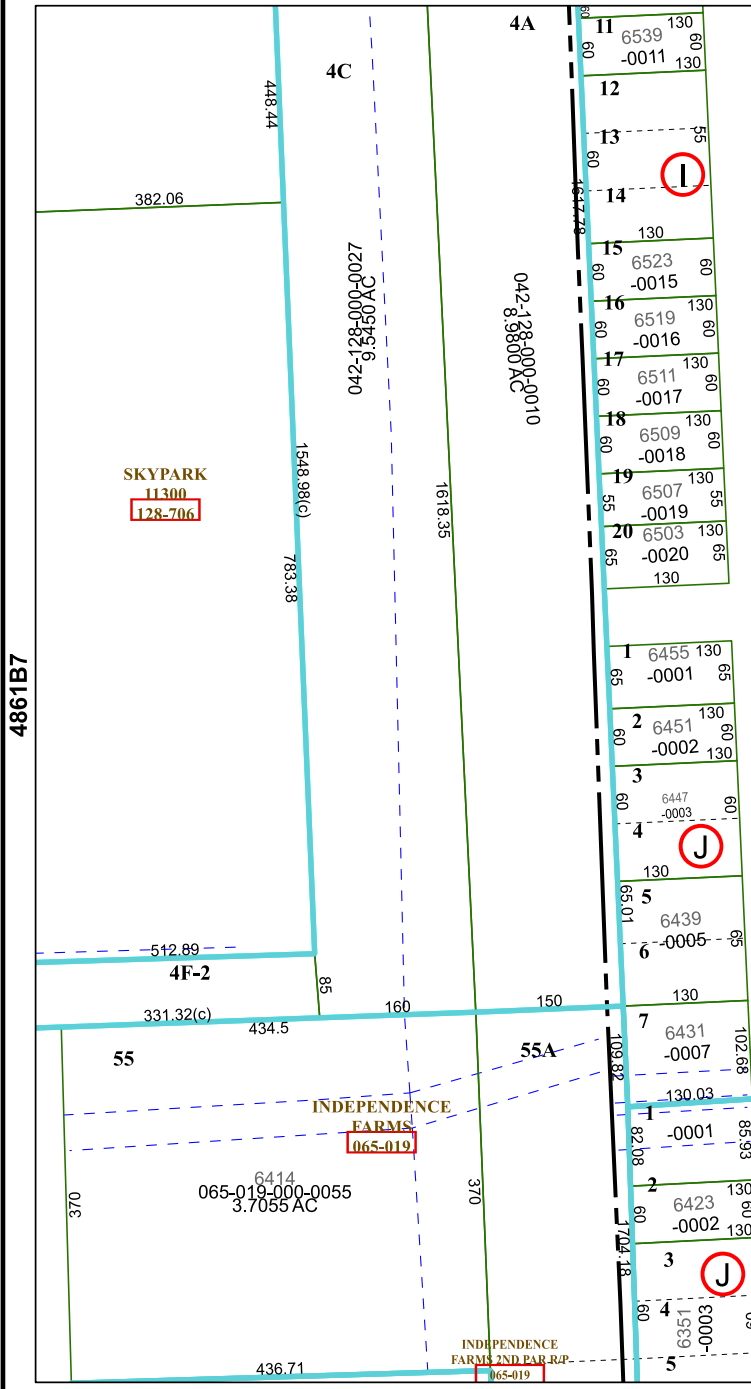
HAYSLIP LANE

21	20	19	18	17	16	15	14	13	12	11	10	9	8
65	60	60	60	60	60	60	60	60	60	60	60	60	60
1143	1135	1127	1119	1112	1104	1096	1088	1080	1072	1064	1056	1048	1040
-0021	-0019	-0017	-0016	-0014	-0013	-0011	-0010	-0009	-0009	-0009	-0009	-0009	-0008
125	125	125	125	125	125	125	125	125	125	125	125	125	125

KIRWIN LANE

21	20	19	18	17	16	15	14	13	12	11	10	9	8
65	60	60	60	60	60	60	60	60	60	60	60	60	60
1143	1135	1127	1119	1112	1104	1096	1088	1080	1072	1064	1056	1048	1040
-0021	-0019	-0017	-0016	-0014	-0013	-0011	-0010	-0009	-0009	-0009	-0009	-0009	-0008
125	125	125	125	125	125	125	125	125	125	125	125	125	125

4861B12



SKYPARK
11300
128-706

INDEPENDENCE FARMS
065-019

065-019-000-0055
3.7055 AC

INDEPENDENCE FARMS 2ND PAR.PP.
065-019

4861B7

5A1966