

4861B10

4861D6

Harris Central Appraisal District



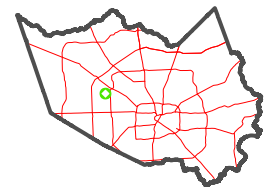
0 45 90 180 Feet

PUBLICATION DATE: 12/30/2023

Geospatial or map data maintained by the Harris Central Appraisal District is for informational purposes and may not have been prepared for or be suitable for legal, engineering, or surveying purposes. It does not represent an on-the-ground survey and only represents the approximate location of property boundaries.

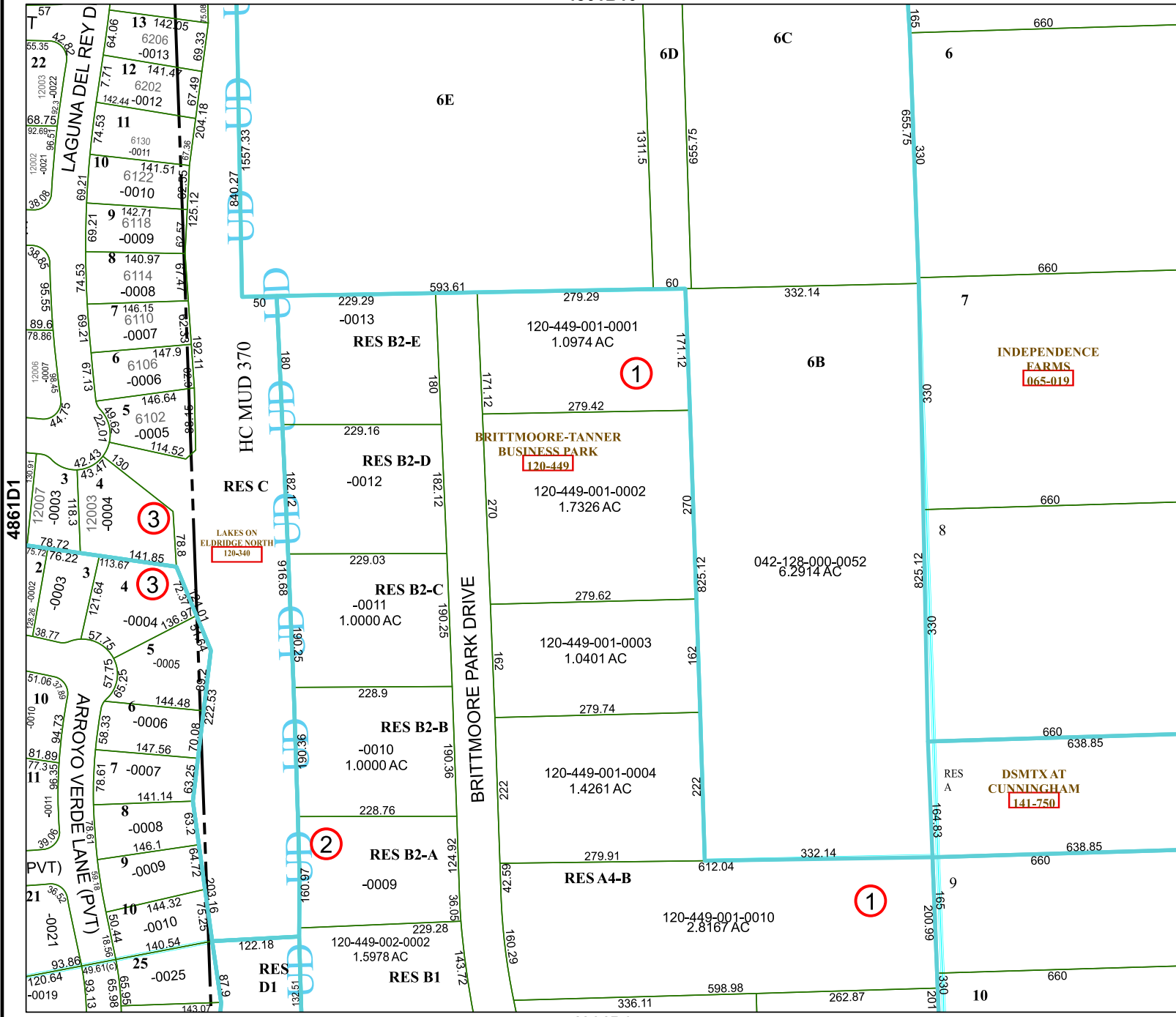


MAP LOCATION



FACET 4861D2

12	9	10	11	12
4	1	2	3	4
8	5	6	7	8



4861D1

4861D3

4861D5

4861D7

4861D9