

4863C9

Harris Central Appraisal District



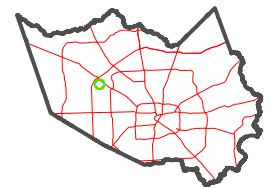
0 45 90 180 Feet

PUBLICATION DATE: 2/28/2024

Geospatial or map data maintained by the Harris Central Appraisal District is for informational purposes and may not have been prepared for or be suitable for legal, engineering, or surveying purposes. It does not represent an on-the-ground survey and only represents the approximate location of property boundaries.



MAP LOCATION



FACET

4862A1

11	12	9	10	11
3	4	1	2	3
7	8	5	6	7

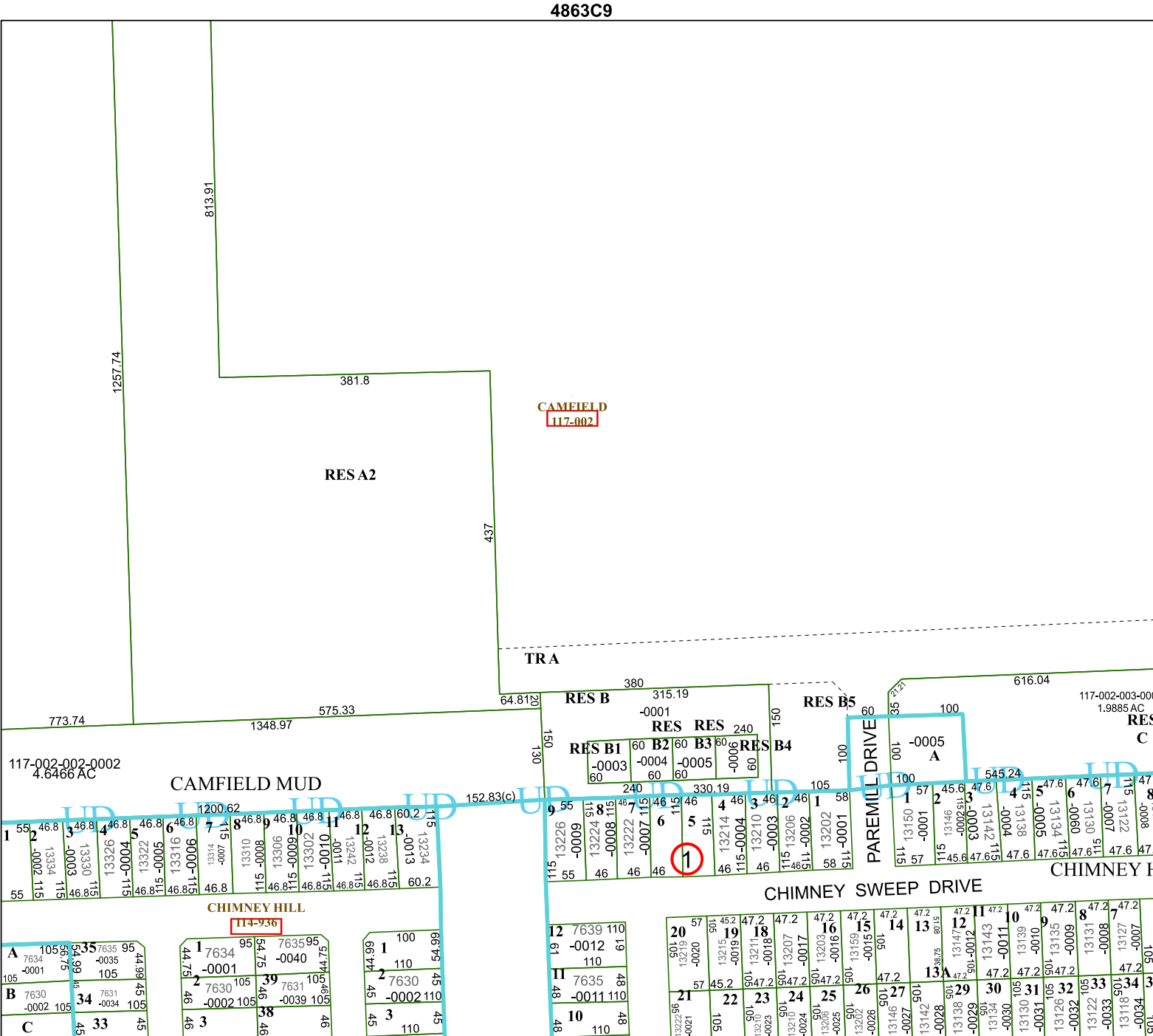
4762B4

4862A2

CAMEFIELD
117-002

RESA2

TRA



4862A5