

4863C10

RES A

Harris Central Appraisal District



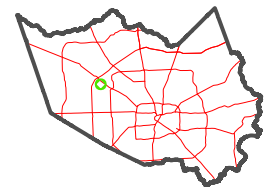
0 45 90 180 Feet

PUBLICATION DATE:
2/28/2024

Geospatial or map data maintained by the Harris Central Appraisal District is for informational purposes and may not have been prepared for or be suitable for legal, engineering, or surveying purposes. It does not represent an on-the-ground survey and only represents the approximate location of property boundaries.



MAP LOCATION



FACET 4862A2

12	9	10	11	12
4	1	2	3	4
8	5	6	7	8

4862A1

CAMFIELD MUD

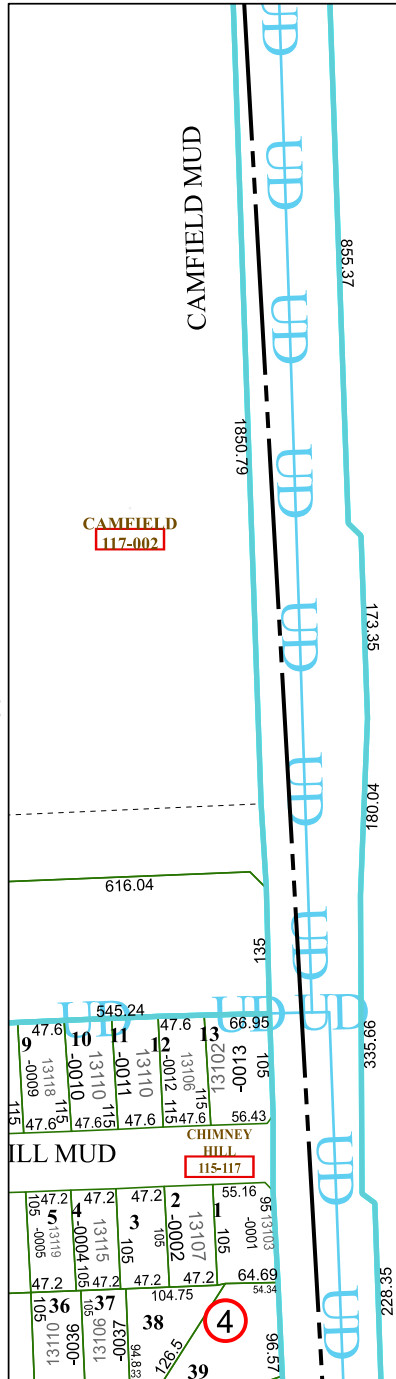
CAMFIELD
117-002

CY-FAIR HIGH
SCHOOL 7
122-358

2

122-358-002-001
86.7800 AC

4862A6



CHIMNEY
HILL
115-117

4